



the power of human connections

sparks

Your Touchstone Energy® Cooperative



a monthly newsletter from Steele-Waseca Cooperative Electric

July 2025

With SWCE transitioning to a new billing system on May 5, 2025, members on auto pay whether ACH, debit, or credit card will have their payments processed on the 5th of the month unless the 5th falls on a holiday or weekend, then it will be the first business day after the 5th.

Thank you for your cooperation:)

inside connections

- 2** Manager Connection
- 3** SWCE high school scholarship recipients
- 4** Cookin' Connection; SWCE community solar update; Stray voltage questions
- 5** Talk to your kids about electrical safety; Lithium-ion battery safety; Generating capacity projected
- 6** Ad Connection; 4-Seasons Vacations
- 7** Ad Connection; SWCE dump truck sold; Soil excavation at SWCE; Dodge County Fair, July 16-20
- 8** Year-round energy savings

calendar of events

July

- 3-4** Blooming Prairie's Old Fashioned Fourth of July Independence Day; **SWCE office is closed**
- 5** International Day of Cooperatives
- 9-13** Waseca County Fair
- 16-20** Rice County Fair
- 18-20** New Richland Farm & City Days
- 24-27** W. Concord Survival Days
- 25-27** Montgomery Kolacky Days
- 27** Korean War ended in 1953; Litomysl Summer Festival

Two new directors elected by mail-in ballot announced at Steele-Waseca Cooperative Electric's 89th Annual Meeting

Steele-Waseca Cooperative Electric members in attendance for the co-op's 89th annual meeting at its headquarters in Owatonna Tuesday, June 3, learned the results of the co-op's mail-in ballot for three director seats.

Steele-Waseca Cooperative Attorney Tricia Lancaster announced to the 487 registered members in attendance that a total of 1,304 mail-in ballots were received by Survey & Ballot Systems, who managed and audited the results. In District 2, Anton H. Seykora of rural Ellendale was elected to a three-year term with 720 votes to 549 for Candidate Lianne M. Possin of rural New Richland. District 4 Incumbent Dennis C. Ringhofer of rural Owatonna was unopposed and re-elected to a three-year term with 1,177 votes. In District 6, Weston L. Wilson of rural Owatonna was elected to a three-year term with 544 votes; candidates Alex Ebenhoh of rural Claremont and Michael T. Herman of rural Owatonna received 507 and 202 votes respectively. 1000984

Retiring board directors Gary Wilson and Gerri Lienke (pictured adjacent right) were recognized for their years of service on the board; Wilson served for 33 years and Lienke for 21. She addressed the 1,024 members and guests in attendance, "Can you believe it? Twenty-one years ago you elected me as director of District 2. Today I'd like to thank each and every one of you as you continued to vote for me over the past 21 years. It was one of the greatest experiences of my life which I'll never forget. I feel so blessed. It wasn't all sunshine and roses, but together we worked through it and kept the lights on. I will certainly



Directors elected to the SWCE board Tuesday, June 3, during the co-op's 89th annual meeting were (left to right): Anton Seykora, District 2; Dennis Ringhofer, District 4; and Weston Wilson, District 6.

miss my co-op family as I step down.

"At the time I was elected, Jerry Mikels was the CEO. When we attended various out of town meetings such as regional, district, or state meetings, he'd introduce me as 'the first lady,' and I'd correct him, 'I'm the first female elected to our board.' He also commented that having a female on the board brought a new perspective on many topics and it was greatly appreciated.

"An old adage states, 'To keep peace in the hen house, you need at least one rooster.' So maybe to keep peace in the rooster house, you need one good hen.

(SWCE annual meeting continued on Page 8)



The local Color Guard led by Steele-Waseca retiree, John Iverson, conduct their procession for the Presentation of Colors at the annual meeting with American flags displayed by Fari-bault Middle School and Owatonna High School students.

Published monthly by
 Steele-Waseca Cooperative Electric
 2411 W Bridge Street, PO Box 485
 Owatonna MN 55060-0485

This institution is an equal opportunity provider and employer.

Website: www.swce.coop
 Email: info@swce.coop



Board of Directors

PJ Duchene, District 1
Vice President, GRE Director
 Anton Seykora District 2
 Neil Schlaak District 3
 Dennis Ringhofer District 4
 Rodney Krell, *President* District 5
 Weston Wilson District 6
 John Beal District 7
 Ronald Sommers District 8
Secretary/Treasurer
 Scott Carlson District 9
Assistant Secretary/Treasurer

Management

Syd Briggs *General Manager*

Division Managers

Kim Wilson *Member Services*
 Jon Stelter *Finance*
 Dan Meier *Operations*

Office Hours

8:00 a.m.-4:30 p.m., Monday-Friday

Operations Office Hours

8:00 a.m.-3:30 p.m., Monday-Friday

For Customer Service, Billing Questions and Power Outages Phone:

507-451-7340 or 800-526-3514

Before calling to report an outage

1. Check fuses and circuit breakers in your home and on meter pole.
2. Check with your neighbors to see if they have power.
3. Look for possible causes such as a tree branch on wires, a broken pole, twisted wires, etc.

To leave a non-emergency message whenever SWCE's Office is closed:

Phone 507-451-7340 or 800-526-3514 and listen to the prompts. Please have your account number, phone number, and name on the account available.

Call *Before* You Dig
 Gopher State One Call
 811 or 800-252-1166

48-hour notice required for ALL
 underground cable locations

manager connection

By Syd Briggs,
 General Manager



It is always great to have our annual meeting and hear from our members.

This year we had over 1,000 attend the meeting (representing almost 500 memberships), served pork chops, reported on our activities for the past year, and on upcoming changes to the industry.

Our finances are strong, we have plans to continue to retire significant amounts of capital credits to our members who are contributing to our cost of service and margins, and we are looking forward to some opportunities for growth and expanded rebates.

One of the questions that we heard from our members was about transmission line extensions and upgrades in our service area.

Our power supplier, Great River Energy (GRE), is very involved in the transmission infrastructure that serves us, and provided the following information for next year and the near future. In 2026, Steele-Waseca Cooperative Electric is planning a new distribution substation in the city of Medford which requires a new transmission tap, switch, and metering package. This is a small,



Briggs addressed attendees at Steele-Waseca's 89th annual meeting, June 3, at its headquarters in Owatonna.

"...we are looking forward to some opportunities for growth and expanded rebates."

but very beneficial transmission project that will be a boost to reliability for the Medford area.

In 2027, there will be 11 miles of transmission rebuild from St. Olaf Lake to Matawan. This is a major improvement to a transmission line that will increase the conductor size and therefore the capacity of service.

In addition, in about the next five to six years, there are plans to replace about 14 miles of transmission line in the Owatonna and Faribault area that will greatly improve and increase the capacity size of the conductor. These efforts are significant in cost and coordination, and obviously require calculated studies and long-term planning, and are a significant reason Steele-Waseca members have great experiences in daily reliability.

Another question involved an update on electric vehicles on the Steele-Waseca system. We continue to see more electric vehicles in our area, and estimate there are about 50 on our system, although we continue to have several charging stations in which many people in addition to our members charge their vehicles as they pass through our area. The growth is good for the members of Steele-Waseca; it is steady growth that usually occurs at night when we have the most abundant availability of power; and it is well within our capacity. 1057272

In addition, we had a question on data center activity in our area. Steele-Waseca has been involved with a proposed data center for the past year. It would also be good for the members to have growth of this type to help spread cost of infrastructure and provide added rate stability. It is not an overwhelming load for us or for GRE, which gives us hope for SWCE and the economic development in our service territory.

Again, it is an honor to serve our membership every day, and I enjoyed being at the annual meeting to provide information and reports on yesterday, today, and tomorrow.

#swceGROWTH

scholarship connection

Steele-Waseca Cooperative Electric awards 17 scholarships in 2025 to high school graduates

Steele-Waseca Cooperative Electric awarded \$1,000 scholarships to 17 high school seniors who graduated this past school year.

A portion of the funds to support these scholarships come from unclaimed capital credit equity.

Steele-Waseca's scholarship program has awarded \$249,250 in scholarships since the program was established in 1954. 26431

The recipients are a dependent of a Steele-Waseca member and will be attending on a full-time basis ranging from a three-month post-secondary certificate program to a four-year college degree. This was a change this year from the requirements of previous years. The recipients were selected by their respective high schools. They include:

- **Marianna Hager**, Bethlehem Academy, the daughter of Jon and Selena Hager, Lonsdale.

- **Grady Steckelberg**, Blooming Prairie, the son of Tricia and the late Karl Steckelberg, Blooming Prairie.

- **Olivia White**, Faribault, the daughter of Carl White, Faribault.

- **Christopher Thompson**, Hayfield, the son of Don and Barb Thompson, Hayfield.

- **Madeline Hoehn**, Janesville-Wal-dorf-Pemberton, the daughter of Dan and Kendra Hoehn, Waseca.

- **Cohen Melcher**, Kasson-Man-torville, the son of Kerry and Cresta Melcher, Mantorville.

- **Ross Aldorfer**, Kenyon-Wanam-ingo, the son of Mike and Holly Aldorfer, Kenyon.

- **Laura Smith**, Medford, the daughter of Kristin Gedicke, Owatonna.

- **Derek Brezina**, New Prague, the son of Jenna Brezina, Lonsdale.

- **Sierra Misgen**, New Rich-land-Hartland-Ellendale-Geneva, the daughter of Sara and Mark Misgen, El-lendale.

- **CJ Stalberger**, Northfield, the daughter of Clinton and Sheila Stal-berger, Dundas.

- **Lilly Trager**, Owatonna, the daughter of Jeffrey and Michelle Trager, El-lendale.

- **Adeline Lotton**, St. Clair, the daughter of Wade and Andrea Lotton, Minnesota Lake.

- **Zoey Finkenbiner**, Tri-City Unit-ed, the daughter of Matthew and Julie Finkenbiner, Lonsdale.

- **Naomi Lebak**, Triton, the daughter of James and Anna Gardner, Blooming Prairie.

- **Katlyn McMurphy**, Waseca, the daughter of Paul McMurphy, Waseca.

- **Gabe LaCanne**, Waterville-Ely-sian-Morristown, the son of Brenda La-Canne, Morristown. ~~9/2~~

 #swceLIFE+



**Marianna
Hager**



**Grady
Steckelberg**



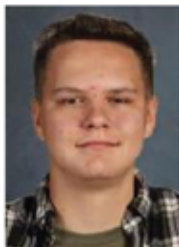
**Olivia
White**



**Christopher
Thompson**



**Madeline
Hoehn**



**Cohen
Melcher**



**Ross
Aldorfer**



**Laura
Smith**



**Derek
Brezina**



**Sierra
Misgen**



**CJ
Stalberger**



**Lilly
Trager**



**Adeline
Lotton**



**Zoey
Finkenbiner**



**Naomi
Lebak**



**Katlyn
McMurphy**



**Gabe
LaCanne**



cookin' connection

Tomato Juice

Marlene Lau

Pemberton

1 c. sugar
3 tsp. celery salt
1 tsp. garlic salt

3 T. salt
2 tsp. onion salt
7 qts tomato juice

Boil tomatoes, strain, measure and add above ingredients. Boil thoroughly and seal while hot.

Please use a 3 x 5 card when submitting your recipe. The member whose recipe is published will receive a \$7 energy credit.



Steele-Waseca Cooperative Electric's solar subscribers will see a 51 kWh credit per panel on this month's statement for energy generated during May 2025. Learn more about community solar and The Sunna Project by visiting Steele-Waseca's website, swce.coop. #swceINNOVATION

Was your account number in Sparks?

Each month five account numbers are printed in *Sparks* and a total of \$35 in energy credits is divided among however many of those numbers are found. For example, if all numbers are found, a credit of \$7 will be applied to the members' following month's electric bills; or, if only one number is found, that member receives the full \$35 credit. Members finding their numbers who have a load management receiver on their dual fuel, electric water heater, air conditioner, or genset will receive an additional \$7 credit. When you find your number, phone our office no later than the 7th of the month following receipt of the *Sparks*, or the amount will be forfeited. 19244

June issue of Sparks

Numbers found:

None found their account number

Numbers not found:

Brad J. Austin
Kristin/David Tapper
Jeffrey A. Ingvalson
Wayne/Karen Nielsen
Mark Ewert



Sparks in brief . . .

• **Want easy energy payments?** Sign up for **EnergyPay Plus**, our automatic payment plan, or **Energy Prepay**, our discounted advance payment plan. Contact our office for details. You may also pay your bill online at www.swce.coop, or register your account with SmartHub. For instructions to use Smarthub, visit swce.coop/smarthub.

• **If you have changed or added phone numbers**, please contact SWCE to update your contact information.

• **Need a new water heater?** For information about our Westinghouse Electric Water Heater Program, phone the SWCE office weekdays between 8 a.m.-4:30 p.m., or email rebates@swce.coop.

• **May temps** – The average high temperature for May was 69° F, while the average low was 48° F. This resulted in 246.5 Heating Degree Days (HDDs) and 31.5 Cooling Degree Days (CDDs). They compare to last year's average high of 71° F and average low of 48° F, which resulted in 196 HDDs and 21.5 CDDs.

• **ENERGY STAR® Rebates** – In 2025, all ENERGY STAR refrigerators/freezers (with recycling), electric clothes dryers, dehumidifiers, central air conditioners, air and ground source heat pumps, light emitting diode (LED) bulbs purchased (limit 5) are eligible to receive rebates (may not be combined with special promotions). Rebate request forms must be submitted within 90 days of purchase. Rebate forms are available at swce.coop. For more information or to receive a rebate request form, email rebates@swce.coop or call 507-451-7340 or 800-526-3514.

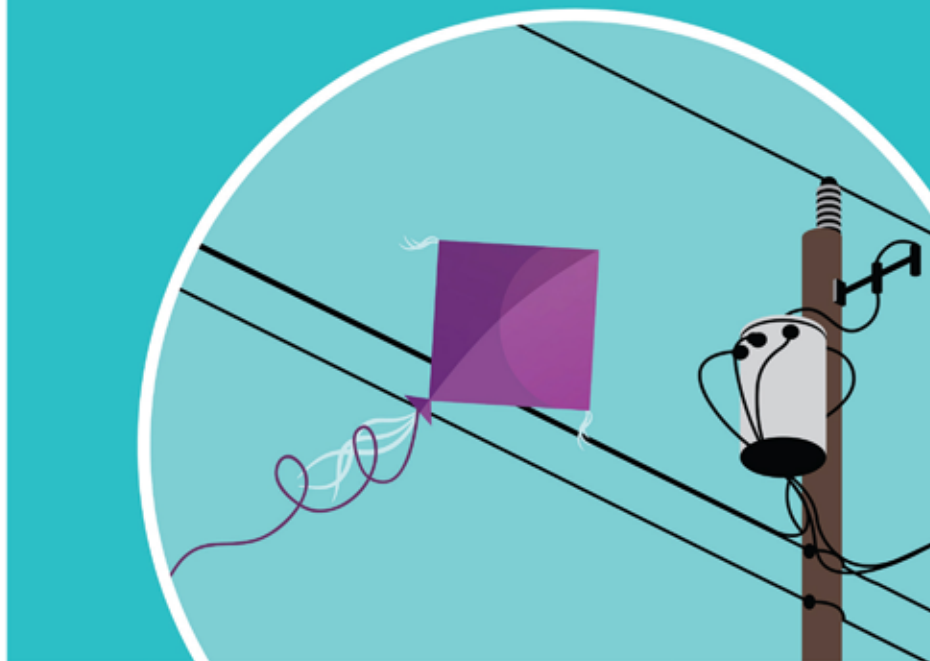
• **SWCE's tree service contractor** – Carr's Tree Service, Inc., is contracted to do SWCE's tree trimming. To report a tree concern, phone:

507-451-7340 / 800-526-3514

LIVESTOCK OWNERS

If you have questions or concerns regarding stray voltage in your livestock confinement building(s), or are planning an addition, or constructing a new one, call Steele-Waseca at 507-451-7340 or 800-526-3514. Steele-Waseca will work with you and your electrician to eliminate potential stray voltage problems. You may also visit: www.minnesotastrayvoltageguide.com.

Talk to your children about the importance of practicing electrical safety.



Midwest grid operator projects sufficient generation capacity

According to the Midwest grid operator, MISO, the region has sufficient resources to meet electricity needs in the year ahead.

MISO recently released the results of its 2025 planning resource auction, which supplied more capacity than needed throughout its footprint for the upcoming planning year, while signaling a tightening supply-demand balance in the market during the peak summer months.

MISO members like Great River Energy (GRE), Steele-Waseca Cooperative Electric's wholesale power provider, routinely plan to have enough electric generating capacity to cover their customers' and members' load requirements plus additional reserves. Anything above and beyond can be sold to other utilities or offered into the annual auction.

"Great River Energy has sufficient capacity to serve our member-owners and we had surplus to offer into the auction for every season," said Greg Padden, GRE's director of power supply and markets. "Our portfolio of diversified

power supply resources and members' demand response assets are well positioned in the capacity market."

This is the first year MISO utilized a Reliability-Based Demand Curve (RBDC), which introduces a reliability-focused pricing structure to provide higher value for accredited capacity, especially when the system approaches minimum resource adequacy targets.

"MISO's market reforms continue to assist in providing pricing signals that improve market efficiency and enhance reliability across the footprint," said Aubrey Johnson, MISO's vice president of system planning and competitive transmission. "We developed the RBDC through extensive collaboration with the organization of MISO states, our stakeholders and our Independent Market Monitor to ensure this proactive approach helps meet future needs of our evolving fleet."

Summer readiness assessment released

(Electric generating capacity continued on Page 7)
sparks • july 2025

Lithium-ion battery safety on flights

The Federal Aviation Administration (FAA) reports the number of lithium-ion battery incidents involving smoke, fire, or extreme heat on flights doubled from 2019 to 2024.

The majority of these incidents were caused by battery packs or vapes/e-cigarette devices. If your device has a swollen battery, gives off odd odors or sounds, or emits excessive heat, this is an indication that it is not safe to use or fly with. Any device that's rechargeable should be inspected for these warning signs.

Lithium-ion batteries can be found in cellphones, tablets, laptops, electric bikes and scooters, toothbrushes, and backup batteries, along with other regularly used devices. Damaged or defective batteries can cause fires.

Signs of a battery problem

- Change in the battery color.
- Sweet electrical burning odor emitted from the battery.
- Noises or leaking coming from the battery.
- Change in the battery or device shape.
- Smoke coming from the battery.
- If safe to do so, move suspected damaged or defective batteries or devices to an area away from the structure or into fireproof containers.

What to do if a battery fire occurs

- A damaged battery may release toxic gas that may not be visible and can be deadly even in small amounts.
- Evacuate the area as batteries can explode.
- Alert others of battery fire.
- Call 911 and notify them of the battery fire.

What to do with a damaged battery

- Batteries should only be recycled at approved battery recycling drop-off locations. Damaged, defective, or recalled batteries require special attention. Visit call2recycle.org.
- Damaged batteries should be handled with care.
- Never place batteries in regular

(Lithium-ion battery safety continued on Page 7)

ad connection

give away

CAMPER AWNING ROLLER & HARDWARE. 334-8827.

KITTENS, born April 9, colors white, orange, very nice. 583-2173.

USED BATH CHAIR; BATH TRANSFER CHAIR; COMMODORE; GAIT BELT, new. 455-3468.

TAKE DOWN & REMOVE A 100' RADIO ANTENNA TOWER & GUY WIRES, no longer in use, 8 mi. SE of Waseca. 461-0762.

FREE ONLINE CLASSIFIEDS, you place & remove your own ad on SWCE's website, swce.coop, these are separate from Sparks & will not appear in Sparks unless mailed, delivered, or emailed to SWCE.

wanted

OLD COLLECTIONS OF U.S. POSTAGE STAMPS, fair prices paid. 676-0970.

USED/WASTE OIL, 200-gal. min. 420-7429/Quentin.

BARN, GRANARY, &/OR OUTBUILDINGS, I remove to re-purpose the lumber; **OLD TIN; BARN SIDING OR LUMBER**. 330-0258/Tim.

LOOKING FOR CARPENTERS & REMODELERS! Flexible hrs, full- or part-time work, no experience needed, must have a valid driver's license, \$18-25 an hour. Set up an interview with Eric at 676-4886.

TDR TRANSFER DEVELOPMENT RIGHTS in Erin & Forest Twps, CPI vs CER calculation, are you losing them? Sell & transfer off before deadline. 612-756-0271/Dan.

FORD SKID STEER, diesel. 330-1849.

USED TEDDER. 412-1171.

for sale

WHITE FIELD BOSS TRACTOR, 2-70 w/bucket. 412-1388.

JD Z510 "0" TURN MOWER, 48" cut, 425 actual hrs, \$4000; **ALUM. PONTOON BOAT LIFT** w/gd canopy, \$2250. 330-3945.

1979 HONDA TWINSTAR MOTORCYCLE, all orig. parts, 5200 mi. 462-3532.

DUMP TRUCK AVAIL. TO DELIVER: rock, gravel, dirt, etc., 15.5-ton capacity. 456-7774.

All area codes are 507 unless otherwise noted

CABIN ON LAKE MAZASKA, fully furnished, sunny side, new dock, in Voracek's Cozy Acres, \$150,000. 612-282-9056.

AUSTRALIAN SHEP. PUPS, born April 24, exc. family, companion, & working dogs, purebred/registered, parents on-site, 1st shots & dewormed. 456-3419.

TREE TRIMMING, REMOVAL & STUMP GRINDING, professional climber & aerial lift to U of M guidelines; **2007 FRONT CHROME BUMPER** for an F-650, new. 456-1609.

2004 POLARIS RANGER w/heated cab & plow, low miles, \$5500; **STUDIO-EFFICIENCY APARTMENT FOR RENT**, seeking male, medium age to retired. 210-1826.

HAY, 1st crop; **1990 FARMALL H**, new paint, tires, & tabs; **JOHNSON SEAHORSE 6-HP BOAT MOTOR**. 456-0835.

MINI STORAGE UNITS, Blmg Prairie. 456-2957.

17' ALUMACRAFT CANOE, \$400. 465-8566.

2004 CHEVY 1-TON DUMP TRUCK, \$7500; **1998 CHEVY 1-TON**, \$9000; **1994 REDI HAUL 20' DECKOVER TRAILER**, \$4500. 475-2337.

1994 IH STRAIGHT TRUCK w/18' freezer box, \$5300; **SIDE-BY-SIDE REFRIG./FREEZER** for a garage, \$40. 334-7177.

RENTAL, Izaak Walton League Bldg., 4 mi. south of Owat., seats 100, full kitchen, grill, Wi-Fi, \$175. 451-7946.

MINI STORAGE UNITS, Morristown, any size. 330-4776.

FIREWOOD, mostly hardwood, \$50 per container (approx. 1/4 cord); **CANNED GOODS; OTHER "FINDS"**, SW Owat. 456-4589/leave message.

SHINGLING & LIGHT CONSTRUCTION, free estimates. 456-0296.

WOODS BRUSH CUTTER, 3 point, 5', used just once, like new, \$1700. 213-1277.

2004 WINNEBAGO VECTRA 40' DIESEL PUSH-ER; 2021 ATC ENCLOSED TRAILER, 18' + 2 alum.; **2009 SMART CAR PASSION CABRIOLET CONVERTIBLE/GAS**. 213-0869/leave message.

BOAT/RV STORAGE FOR RENT. 475-2322.

AUGER, 8x60, PTO drive; **ELEC. AUGER**, 10 hp, 8x60. 272-5834.

'94 14' ALUMACRAFT LUNKER w/1997 Spartan roller trailer, & '85 Evinrude 15-hp motor. 451-7583.

GRASS HAY, small sq. bales by Waldorf. 327-3672.

2002 STINGRAY LX 19' 190-HP MERC CRUISER, 123 hrs on the boat, skiing, tubing, etc., runs fantastic, \$6800. 301-2657/Nfld.

75-100 SM. SQ. HAY BALES THAT WOULD BE GREAT FOR BEDDING, near Blooming Pr., \$2/ bale. Text 456-9546.

BEACHFRONT VACATION CONDOS FOR RENT in Fort Myers Beach, South Padre Island & Mexico, visit www.sandysbeachfrontcondo.com for details & photos. 612-865-9604/Sandy.

WOMEN ROLLER SKATES w/case, like new, size 6, \$50. 649-1686.

SPECIALIZED CROSSROADS, 700x35c, men's hybrid, 21 spd, \$100; **DIAMONDBACK**, small men's hybrid, 700x35c, 21 spd, \$150; **RALEIGH**, women's 21 spd, 26x175, MTB, \$100. 330-3178.

FORTUNE CREEK TRL LOTS, the covenant allows for a pole shed, starting at \$75,000. 838-5033/John.

FIREWOOD, you cut & haul, \$75/pickup load. 380-3958.

MIXED GRASS HAY, sm. sq. off wagon. 210-1158.

HUNTING BLINDS, weather/rodent proof, insulated & more. 330-2452.

SNAPPER 410 COMMERCIAL BRUSH TRIMMER w/saw blade, \$30. 363-6333.

LANDSCAPE SUPPLIES & DELIVERY SERVICES; STUMP GRIND.; RENTAL EQUIP.; MULCH, DIRT, SAND, GRAVEL, ROCK. 200-4674/New Richland.

55-GAL. PLASTIC & STEEL BARRELS w/covers, \$5-\$15; **220-GAL. POLY TANK** w/valve in forklift frame, \$75. 421-2521.

(For Sale ads continued on Page 7)

travel

CANADIAN ROCKIES w/Calgary Stampede, July 6-13. Round trip Delta flights, 9 meals, city tours of Jasper, Banff, & Calgary, narrated cruise to Spirit Island, & more! \$5,799 pp with 2 per room.

GIRLFRIEND GETAWAY MYSTERY TRIP, Aug. 14-17. Deluxe motor coach, 3 nights accommodations, 7 meals, new adventures, lots of fun and laughter. \$999 per person with 2 per room.

NAT'L PARKS: ARIZONA & UTAH, Sept. 8-18. Deluxe motor coach, 14 meals, Durango/Silverton Narrow Gauge Railroad, admissions to: Badlands, Grand Canyon, & more! \$2,699 pp w/2 per room.

Call 4-Seasons at 373-4705 or 373-2473, from 9 a.m. to 5 p.m. weekdays, to learn more about their tour information.

4 Seasons
Vacations, Inc.

TRUST OUR EXPERIENCE. LOVE YOUR VACATION.

Sparks Free Classified Ad Form for all SWCE Members

Ads need to be received in our office by **July 3** to ensure being printed in the August Sparks. Please print neatly or type your ad of **20 words or less** on this form. We reserve the right to edit ad copy to allow space for more ads. Ads received after the 3rd will be printed in the September issue.

☐ For Sale

☐ Wanted

☐ Give Away

Phone # _____ Account # _____

Name _____

Clip and mail to: SWCE, PO Box 485, Owatonna MN 55060-0485, deliver to the SWCE office, or email your ad to: sparks@swce.coop.

ad connection

(For Sale ads continued from Page 6)

2018 CHEV. EQUINOX, only 43K mi., exc. cond., \$13,900. 339-0763 or 330-0809 for details.

WHEELCHAIR, like new, used inside house most of the time, \$125. 279-2489.

2006 YAMAHA VINO 50CC SCOOTER, red, new battery, 831 mi., vry gd cond., \$1100. 413-3135.

2- & 3-WHEEL RECUMBENT BIKES; 1 BIG WHEEL MOUNTAIN BIKE; PICKUP FLATBEDS; A-C TRACTORS; TRAILER, 6x10. 402-7679.

DRY OAK FOR FIREWOOD, you cut up, \$50/pickup load. 528-2252.

RED WING CROCKS; BIG OLD JARS; OLD ROCKING HORSES; OTHER MISC. OLD STUFF; WIRE DOG KENNELS. 479-0576.

35-GAL. LAWN SPRAYER, 5' boom, like new, \$150. 456-3086.

15' SHELL LAKE BOAT w/roller trailer; **16' LUND BOAT**, trailer, trolling motor, 25-hp Johnson, new seats, depth finder, oars. 451-9445.

PAMPERED CHEF, June is the perfect time to host a party, get double the free products this month, hosts can get 60% off any product or set. Email: karyn0125@msn.com.

2020 EGO SELF-PROPELLED 21" LM2100SP w/bagger, mower only, light & little usage, \$200. 837-9986.

JD 960 24' DIGGER CULTIVATOR; BROWN EGGS. 213-0443.

DAYBED, new, white & gold, \$100/obo. 491-2667.

2013 WINNEBAGO VISTA, 26', Ford V10, 26,000 mi., sleeps 4, generator & all the amenities, everything works, awning sideout, exc. cond., best offer. 334-3532.

2005 YAMAHA ELEC. GOLF CART, windshield, mirror, back seat, burgandy in color, new lithium-ion battery & charger, nice, \$2495. 491-4565.

1980 14' ALUMACRAFT DUCK BOAT w/floor, (2) 9.5-hp Evinrude (1 good, 1 parts), \$900. 676-2802.

OLDER GLEANER F-2 & K, may need carb cleaned, but does run, use for small farm, combine demolition; **LAST YR'S ROUND BALES**, 4x5 net wrapped; **55-GAL. BURNING BARRELS**. 676-6094 or 390-0600.

BARNYARD CHICKS & GUINEA KEETS. 475-1468.

53RD ANNUAL LITOMYSL SUMMER FESTIVAL, Sun., July 27, Holy Trinity Catholic Church, 9946 SE 24th Ave., Owat., 11 a.m. to 4 p.m., live music, food, games, & prizes for all ages, litomyslchurch.org.

HAY, small square, grass or 80% alfalfa grass mix. 271-9129/Nfld.

Steele-Waseca Cooperative Electric (SWCE) assumes no liability for the content of, or reply to, any item posted. The party posting any advertisement assumes complete liability for the content of, and all replies to, any advertisement and for any claims against SWCE as a result thereof, and agrees to indemnify and hold SWCE harmless from all costs, expenses, liabilities and damages resulting from, or caused by, any advertisement or reply thereto.

(Electric generating capacity continued from Pg 5)

In addition to the auction results, MISO also released its summer readiness assessment outlining the forecasted demand, generation capacity and weather expectations for the upcoming summer season. Much like the auction results, the summer forecast predicts sufficient, albeit tightening, reserves with nearly 138 gigawatts (GW) of available generation expected to meet the summer demand peak of 123 GW.

MISO's summer assessment also pointed out several risk factors including the potential of extreme weather, and a decline in accredited capacity.

"Part of our value proposition is maximizing existing resources to maintain reliability across a large, diverse region," said Jessica Lucas, MISO's executive director of system operations. "At some point we find ourselves in need of every available resource to keep the power flowing across our footprint almost every summer. The continued reduction in accredited capacity makes it much more challenging, especially during heat waves, hurricanes or other extreme weather events."


With a diverse energy portfolio consisting of peaking plants and renewable resources, Great River Energy is well positioned to meet the energy demands of its member-owners for this summer

season, but with an eye toward the future, it is also looking to add more capacity resources as demand for electric-ity grows.

GRE is also utilizing its robust demand response program in partnership with member-owners to support grid reliability and reduce load during peak conditions. A demand response program helps utilities balance supply and demand by shifting electric demand to other times, with cycled air conditioning and interruptible water heating being prime examples.

"As intermittent renewable resources provide more energy to the grid, new dispatchable resources will be needed to ensure reliability," said Padden. "Demand response programs are an important part of our capacity portfolio and the flexibility they afford during periods of high market prices helps to reduce costs for Great River Energy and our member-owners."

Looking forward, the alignment of energy strategies will remain essential to balancing reliability, economic efficiency and sustainability, ensuring the region is prepared for the challenges and opportunities of the next several decades.

 #swceSERVICE

(Lithium-ion battery safety continued from Page 5)

waste and recycling bins, they will likely catch fire.

Courtesy: Electrical Safety Foundation International

 #swceLIFE+



SWCE dump truck sold

The top bid for Steele-Waseca Cooperative Electric's 2008 Freightliner M2 dump truck was \$9,585 and was purchased by a Steele-Waseca member. Sealed bids were accepted until noon Wednesday, May 21. The truck had 209,200 miles.

DODGE CO.
FREE FAIR

Celebrate the Oldest County
Fair in Kasson, MN!

July 16-20, 2025

www.dodgecountryfreefair.com



Moving soil

Excavators were moving soil, May 28, southeast of Steele-Waseca Cooperative Electric's headquarters. A gravel lot is being constructed for contractor's equipment. The project will also include a required holding pond.

sparks • july 2025

member connection

(SWCE annual meeting continued from Page 1)

My one and only prayer is that you continue to seek out more women, along with men, to have the opportunity you gave me.

"Thanks again for 21 years of your support. I will cherish all the memories forever. God Bless."

Members attending this year's annual meeting received a \$30 Power Perks certificate good at participating Steele-Waseca member-owned businesses, and a \$50 Energy Star® certificate good toward the purchase of products with the Energy Star logo. Both certificates expire on Dec. 31, 2025 (no exceptions). In addition, attending members received a package of wool dryer balls to help save energy drying clothes in a clothes dryer.

Prior to the start of the annual meeting, members had the opportunity to donate to an area food shelf with a non-perishable item or cash. In exchange, Steele-Waseca gave donors an LED lightbulb. The co-op gave away 157 bulbs and collected 219 pounds in non-perishable items and \$276. The items and money this year were donated to the New Richland Area Food Shelf.

There were two Early Bird prize drawings. Richard Johnson of rural Claremont had his registration card selected for a \$250 gift certificate from 4-Seasons Vacations in Albert Lea and \$100 gift certificate from Nagel Sod in Medford. A representative with Moland Lutheran Church had their card selected for a \$250 gift certificate from 4-Seasons Vacations in Albert Lea and a \$100 gift certificate from Boonie's Bar & Grill in Faribault. 70110

The Presentation of Colors with the Color Guard, Owatonna High School, and the Faribault Middle School preceded the formal start of the annual meeting.

The meeting also included member approval of the financial report and remarks from General Manager Syd Briggs regarding a summary of the past year for Steele-Waseca and plans in the works for the upcoming year.

Steele-Waseca's 2024 Youth Tour Delegate Langston Richter (pictured adjacent right) of Faribault had a PowerPoint presentation on his



Rainy weather for Steele-Waseca's annual meeting Tuesday, June 3, meant the need for Master Electrician Joel Dulas to utilize an umbrella to minimize exposure to rain in delivering this member to the registration entrance.

experience last year in Washington, D.C. Steele-Waseca Member Services Supervisor Randy Sobrack announced no applications were received for the 2025 Youth Tour and changes were being developed to encourage applications for the Tour in 2026.

Prior to adjournment of the annual meeting, members were given the opportunity to ask questions. Among the topics were sources of power, transmission line construction, electric vehicles, battery storage, and a data center coming to Steele-Waseca's service area.

Following adjournment, the drawing for prizes and flowers was conducted. The first place prize was a gift card package of \$150 to Casey General Store and \$150 to Steve's Meat Market in Ellendale that went to Gerard/Julie Bach, Minnesota Lake. The second place prize was a gift card package of \$100 to Casey's General Store and \$100 to Grampa's Ole Home Meats, Medford, that went to Ronald Bultman, Faribault. The third place prize of a \$100 gift card to Lerberg's Foods, Ellendale, went to Robin/Steven Bjorkquist, Owatonna.

A drawing for the flowers on stage for the annual meeting went to the following: Mark Skroch, Ellendale; Randall Wilkie, Geneva; Dike Deitchler, Northfield; Thompson Oaks Well Association, Ellendale; Larry/Diane Kuchenbecker, Owatonna; Daniel Maas, Faribault; Jessica Oeltjenbruns, Claremont; Dennis/Christy Ebeling, Owatonna; Thomas Tranby, Faribault; Brent Kubat, Owatonna; Larry/Jane Pete, Lonsdale; Jacob Simonson, Lakeville; Walter Bice, Waseca; Donald/Constance Abbe, Medford; Linda Tollefsrud, Rochester; Kenneth/Jenell Warner, Owatonna;

na; Denise/Bret Running, Claremont; Mark Robinson, Blooming Prairie; Larry/Denise Brekke, Owatonna; Allan Severson, Blooming Prairie; Donald McMartin, Claremont; Nick/Barbara Dacloush, Dodge Center; and Marvin/Sharon Johnson, Owatonna.

Following the conclusion of the annual meeting and lunch, the co-op's board of directors met for their reorganizational meeting. There were no officer changes, so continuing is: Rodney D. Krell, Blooming Prairie, president; PJ Duchene, Faribault, vice president; Ronald D. Sommers, Northfield, secretary/treasurer; and Scott J. Carlson, Faribault, assistant secretary/treasurer.

Steele-Waseca has nearly 12,000 service locations in a nine-county area including: Blue Earth, Dodge, Faribault, Freeborn, Goodhue, LeSueur, Rice, Steele, and Waseca counties.

The co-op's 90th annual meeting will be Tuesday, June 2, 2026. ~~9/16~~

#swceAPPRECIATION

6 Tips for Year-Round ENERGY SAVINGS

- 1 Use your ceiling fan counterclockwise in the summer for a down breeze, and clockwise in the winter for an updraft to force warm air down into your room.
- 2 Turn off lights and unplug chargers and electronics when not in use.
- 3 Regularly change or clean your furnace and indoor AC filters as recommended, and keep the area around your outdoor AC unit clear of obstructions.
- 4 Close or lower window coverings to keep out heat or cold.
- 5 Insulate your home and weatherproof windows and doors.
- 6 Use a programmable or smart thermostat. Adjust the temperature a few degrees for overall savings.

Get more tips on creating a resilient and efficient home:

Safe Electricity.org

