



the power of human connections

# sparks

Your Touchstone Energy® Cooperative 

a monthly newsletter from Steele-Waseca Cooperative Electric

May 2022

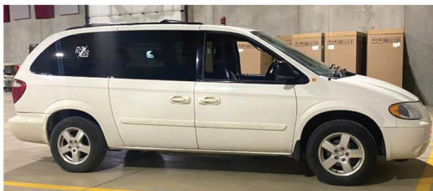
## inside connections

- 2** Manager Connection
- 3** 2022 SWCE board of director nominees;  
1955 SWCE service truck on display
- 4** Cookin' Connection;  
SWCE community solar update;  
Steele County Tip Line
- 5** National Electrical Safety Month;  
KW Saves kWhs;  
Gopher State One Call
- 6** Ad Connection;  
4-Seasons Vacations
- 7** Ad Connection;  
Air Source Heat Pump promo
- 8** Ductless ASHP promotion;  
Cogeneration notification;  
SWCE directors meet legislators

## calendar of events

### May

- 1** May Day
- 3** Nat'l Teacher Appreciation Day
- 4** National Star Wars Day
- 5** National Day of Prayer
- 6-12** National Nurses Week
- 8** Mother's Day 16973
- 14** Minnesota fishing opener
- 15** Peace Officers Memorial Day
- 21** Armed Forces Day
- 21-27** National Safe Boating Wk
- 30** Memorial Day;  
**SWCE office closed**



### For sale at SWCE

2006 Dodge Grand Caravan SXT, 3.8, V6, 90,000 miles, minimum bid: \$4000. All sealed bids are due at Steele-Waseca Cooperative Electric, 2411 West Bridge St., Owatonna, MN 55060, by noon, Friday, May 13. For more information, contact Steele-Waseca Line Supervisor Matt Rohman, 507-451-7340 or 800-526-3514.

## Steele-Waseca Cooperative Electric prepares for in-person annual meeting

For the first time in three years, Steele-Waseca Cooperative Electric will be conducting their annual meeting as an in-person event at their headquarters in Owatonna.

The co-op's 86th annual meeting will be Tuesday, June 7, starting at 10:30 a.m., at 2411 West Bridge Street, Owatonna. The meeting is open to Steele-Waseca member-owners, and their guests. The doors will open at 9 a.m., with display and informational booths open until 10:15 a.m.

Parking will be available on the property surrounding Steele-Waseca's headquarters. Miner's Outdoor & Rec, located at Highway 218 South, Blooming Prairie, will be supplying several golf cars to shuttle members and their guests from their vehicle to and from the meeting.

Registration cards for the annual meeting will be mailed to members during the last week of May. There won't be any preregistration requirements. **Please bring the registration card with you if you are planning to attend.** To be eligible to receive giveaways from Steele-Waseca at the annual meeting, the name on the registration card must match the person submitting it. You can't have someone else present your registration card. If you are unable to attend due to illness (if you are not feeling well, please stay home) or other priorities, you are not eligible to receive the giveaways as this is a thank you for those able to attend.

Steele-Waseca Cooperative Electric will be collecting non-perishable items for an area food shelf this year. Members with a donation to that food shelf, whether monetary or a non-perishable item, will receive a LED lightbulb.




Steele-Waseca Cooperative Electric is conducting their first in-person annual meeting since 2019 (photo above). Member-owners are invited to attend the co-op's 86th annual meeting Tuesday, June 7, starting at 10:30 a.m., at its headquarters in Owatonna. If you are not feeling well, please do not attend any part of the annual meeting, and we'll look forward to seeing you at the annual meeting in 2023.

There will be two early bird drawings for prizes taking place prior to the start of the annual meeting. The business portion of the meeting will begin promptly at 10:30 a.m., with the Presentation of Colors.

To be eligible to vote for directors, members must be registered by 10:30 a.m. sharp. Director candidate profiles are featured on Page 3 in this edition of *Sparks*. Additional candidates may be nominated from the floor during the annual meeting with nominations officially closing at that time.

After the election results are announced, there will be a drawing for grand prizes, and the meeting will be adjourned.


Following adjournment, lunch will be served by Hy-Vee of Owatonna featuring smoked pork chops, vegetables, potatoes, salad, dinner rolls, coffee, milk, water, with Dairy Queen Dilly® Bars for dessert. 

 #swceAPPRECIATION



Published monthly by  
 Steele-Waseca Cooperative Electric  
 2411 W. Bridge Street, P.O. Box 485  
 Owatonna, MN 55060-0485

*This institution is an equal opportunity provider and employer.*

Website: [www.swce.coop](http://www.swce.coop)  Find us on Facebook  
 Email: [info@swce.coop](mailto:info@swce.coop)

**Board of Directors**

- PJ Duchene . . . . . District 1
- Geraldine Lienke . . . . . District 2
- Duane Edwardson, *Chaplain* . District 3
- Dennis Ringhofer . . . . . District 4
- Rodney Krell . . . . . District 5  
*Assistant Secretary/Treasurer*
- Gary Wilson . . . . . District 6  
*President, GRE Director*
- John Beal, *Vice President* . . . District 7
- Ronald Sommers . . . . . District 8
- Renee Malecha . . . . . District 9  
*Secretary/Treasurer*

**Management**

Syd Briggs . . . . . *General Manager*

**Division Managers**

- Darla DeVries . . . . . *Office*
- David Lundberg . . . . . *Finance*
- Dan Meier . . . . . *Operations*

**Office Hours**

8:00 a.m.–4:30 p.m., Monday–Friday

**Operations Office Hours**

8:00 a.m.–3:30 p.m., Monday–Friday

**For Customer Service, Billing Questions and Power Outages Phone:**

507-451-7340 or 800-526-3514

**Before calling to report an outage**

1. Check fuses and circuit breakers in your home and on meter pole.
2. Check with your neighbors to see if they have power.
3. Look for possible causes such as a tree branch on wires, a broken pole, twisted wires, etc.

**To leave a non-emergency message whenever SWCE's Office is closed:**

Phone 507-451-7340 or 800-526-3514 and listen to the prompts. Please have your account number, phone number, and name on the account available.

**Call Before You Dig  
 Gopher State One Call  
 811 or 800-252-1166**

48-hour notice required for ALL underground cable locations

**manager connection**



*By Syd Briggs,  
 General Manager*

Most of us lead active lives. We find ourselves multitasking, constantly checking phones and email to keep up with the demands of modern life.

Thanks to technology, we can accomplish many tasks electronically and remotely to be more efficient. And with so many pressing obligations, we like to protect our “spare” time.

Invitations to attend in-person meetings and gatherings are weighed carefully, especially during pandemic times, as we decide whether or not our time, effort, and health to attend is beneficial. The answer to the question, “What’s in it for me?” must be compelling. On Tuesday, June 7, Steele-Waseca Cooperative Electric will host our annual meeting in person for the first time since 2019. There is a benefit to the cooperative to have our members gather together and review the past year as we elect directors, and we endeavor to make the meeting a benefit to all those who take time to attend.

Steele-Waseca exists to provide safe, reliable, and affordable energy to its member-owners (that’s you!). Equally important is our mission to enrich the lives of all members and to serve the long-term interests of our local communities. This is where you can help.

As a member of the electric co-op community, you have a perspective that is valuable—and we invite you to share it with the cooperative. At the annual meeting, co-op leaders will discuss priorities, challenges, and Steele-Waseca’s financial health, and plans for the coming years. The annual meeting is also the time to vote for board members who will represent you—the members of the co-op. Board members are member-owners—just like you.

Perhaps you may feel you have nothing to add to the discussion, so there is no need to attend Steele-Waseca’s annual meeting. However, every energy bill you pay to the co-op helps ensure better service and reliability for your community in the co-op’s service area. Your dollars are reinvested into improvements that impact the reliability and affordability of your energy. Steele-Waseca wants



For the first time in three years, Steele-Waseca Cooperative Electric is conducting an in-person annual meeting.

To hear from you to better inform our decisions as we plan for the future. It is worth noting the health of the co-op and the well-being of the community are closely intertwined.

While Steele-Waseca provides convenient electronic options for bill-paying and communication, there are times when there is no substitute for in-person engagement. When members of our co-op community come together for a common purpose, we improve the quality of life for all in our corner of the world.

If you’ve never attended our annual meeting, or if it’s been awhile, please stop by. Our co-op family looks forward to visiting with you!

The co-op’s 86th annual meeting will be conducted at Steele-Waseca’s headquarters at 2411 West Bridge Street in Owatonna on Tuesday, June 7. The member registration cards will be mailed in late May similar to pandemic annual meetings conducted during the last couple of years. 1055385

Keep in mind your registration card allows you to register for the annual meeting, which will start promptly at 10:30 a.m., Tuesday, June 7; vote in the board election; and allows you to receive giveaways from the co-op as appreciation for your attendance. You can’t present another member’s registration card for them to obtain giveaways from the co-op. If you can’t make it due to illness or other commitments, you’ll have an opportunity to receive giveaways by attending next year’s annual meeting in 2023.

On behalf of the board of directors, myself, and the employees of Steele-Waseca, we are looking forward to a step toward normalcy for the first time in three years at this year’s annual meeting.

 #swceAPPRECIATION



## swce 2022 board of director nominees

June 7



The 2022 Nominating Committee has selected the following nominees for the Steele-Waseca Cooperative Electric board of directors. Committee members include: Ryan/Jenny Angelow, Faribault; Joyce Ahlman, Faribault; Dale/Lynn Groskreutz, New Richland; Keith/Carol Schrader, Nerstrand; Glenn/Linda Wiesjhan, Owatonna; Denise Bartness, Owatonna; Joseph Haberman, Blooming Prairie; Patricia Pagel, Faribault; and John/Lylia Iverson, Medford. The election of directors will take place during Steele-Waseca's 86th annual meeting, scheduled Tuesday, June 7, starting at 10:30 a.m., at the co-op's headquarters located at 2411 West Bridge Street in Owatonna. #swceTRUST

District 2



**Geraldine G. Lienke**, incumbent, and her husband, Dave, reside in rural Janesville. Gerri has lived in Waseca County her entire life and their parents have also lived in Waseca County their entire life with all being served by Steele-Waseca Cooperative Electric (SWCE). Gerri's father-in-law remembers getting electricity for the first time and shared his story in the co-op's 75th anniversary book. "Just as we are faced today with many changes, I'm sure he went thru the same thoughts of 'how do you think that's going to work?'" wrote Gerri. "Same today with wind & solar generation & electric cars. Will it work for the good of the people? Today, just as years past, we need to have faith that all will create a better life for our kids & grandkids." As for the qualities she brings to the board, Gerri highlighted her work with Crystal Valley, being a good listener and open minded for all concerns brought to her attention. "I will do my best to stay educated by taking classes offered, keeping an open mind as new ideas are brought before us and try to leave the world in good or better conditions as we found it. I will also try to answer any questions & my door is always open."

District 4



**Dennis C. Ringhofer**, incumbent, has been a board director for SWCE since 2004. "I live in Steele County, in Somerset Township with my better half, Becca, on my family farm," wrote Dennis. "We raise corn, soybeans and hay." Between Dennis and Becca, they have 4 children and 10 grandchildren. Dennis is an independent insurance agent for Ringhofer Insurance agency for 34 years and currently serves as vice president of the Owatonna Mutual Fire Insurance Company. "For SWCE, I have completed the Credentialed Cooperative Director Program and hold the Board Leadership Program Certificate," wrote Dennis. "I consider it an honor to be on the Board of Directors for SWCE to see that the needs are met for the farms, residential and industrial as professional as possible. I am very proud to say I am a member and director of SWCE, where we are member owned. There will be lots of changes in the next few years and I would like to be involved with those changes."

District 6



**Michael T. Herman**, resides in rural Owatonna in Havana Township with his wife, Diana Lobo. Michael grew up on a farm outside of Mountain Lake, Minnesota. He joined the Marines and spent 21 years on active duty. In 2006, they moved to Northfield and in 2014 moved to their farm on Rose St. Michael is the CEO for Driessen Water, which has 26 locations in six states and 295 employees. As for the qualities he would bring to the board, Michael stated, "As a CEO and past military experience I believe my leadership, stewardship and team building traits would be a benefit." Among the boards he serves on includes the Owatonna Chamber of Commerce and Minnesota Plumbing Board. "I have always felt that as a person I need and desire to be actively involved in my community and to serve wherever I can." Michael cited his past experience on the Steele-Waseca Nominating Committee and have seen what the board of directors do and how it represents those in the co-op.



**Gary W. Wilson**, incumbent, and his wife, Diane, have retired from farming, but live on their farm in Havana Township. Both are lifelong residents of Steele County, except for four years Gary served in the U.S. Air Force. The couple has two married sons and seven grandchildren, all living in the area. In their leisure, both enjoy searching for antiques and driving their '59 Chevy Impala around the countryside. Gary currently serves as the SWCE board president, and previously served as secretary/treasurer. Additional board responsibilities include representing Steele-Waseca on the Great River Energy board of directors. He has successfully completed the Credentialed Cooperative Director program and holds the Board Leadership Program Certificate. Gary recently received the Director Gold Certificate to signify advanced training in cooperative leadership. He is a former supervisor on the Steele County Soil and Water Conservation District board, served on the Havana Township board, and the Steele County Planning and Zoning Commission. "It is a privilege to serve on the Steele-Waseca board of directors," stated Gary, "and I feel my leadership and experience will help maintain the high standard of quality service that the members deserve and have come to expect."



### 1955 Steele-Waseca service truck displayed

An actual 1955 service truck for Steele-Waseca Cooperative Electric has been repainted, but not fully restored, and was placed for display Tuesday, April 5, near the dropbox at the co-op's headquarters in Owatonna. Steele-Waseca traded the service truck in at the Waseca Dodge dealership many years ago. The dealership sold it to Donald and Lee Zellweger of New Richland. They owned the truck for years and sold it back to Steele-Waseca in September 2003. The co-op has been storing the truck and decided to have it repainted by Kappy's Collision Center of Owatonna, with the intent of having it on display. 38444

#swceAPPRECIATION



## cookin' connection

### Chicken (or Turkey) Wild Rice Casserole

Eunice Meixner

Owatonna

1 c. celery, diced  
1 can cream of mushroom soup  
1 lg. can evaporated milk  
2-3 c. chicken or turkey, cooked, deboned  
1 c. wild rice (cooked as directed on pkg.)  
1 lb. ground beef  
1 can cream of chicken soup

Brown ground beef and celery. Combine all ingredients and put in a greased casserole. Bake at 325° for 1 hour. Makes about 12 servings.

Please use a 3 x 5 card when submitting your recipe. The member whose recipe is published will receive a \$7 energy credit.



Steele-Waseca Cooperative Electric's solar subscribers will see a 34 kWh credit per panel on this month's statement for energy generated during March 2022. Learn more about community solar and The Sunna Project by visiting Steele-Waseca's website, [swce.coop](http://swce.coop). #swceINNOVATION

### Was your account number in Sparks?

Each month five account numbers are printed in *Sparks* and a total of \$35 in energy credits is divided among however many of those numbers are found. For example, if all numbers are found, a credit of \$7 will be applied to the members' following month's electric bills; or, if only one number is found, that member receives the full \$35 credit. Members finding their numbers who have a load management receiver on their dual fuel, electric water heater, air conditioner, or genset will receive an additional \$7 credit. When you find your number, phone our office no later than the 7th of the month following receipt of the *Sparks*, or the amount will be forfeited.

## April issue of Sparks



#### Numbers found:

Kathleen Rinehart  
Roger Wutschke

#### Numbers not found:

Peter or Deb Little  
Eric Gulbransen or Christine Renne  
Jade/Jennifer Cumberland



## Sparks in brief . . .

• **Want easy energy payments?** Sign up for **EnergyPay Plus**, our automatic payment plan, or **Energy Prepay**, our discounted advance payment plan. Contact our office for details. You may also pay your bill online at [www.swce.coop](http://www.swce.coop). By entering your Steele-Waseca username and password you can also view a 13-month history of your account.

• **If you have changed or added phone numbers**, please contact SWCE to update your contact information.

• **Need a new water heater?** For information about our Westinghouse Electric Water Heater Program, phone Cindy Butterfield at our office between 8 a.m.-3:30 p.m., 446-4204 / 800-526-3514.

• **March temps** – The average high temperature for March was 40° F, while the average low was 25° F. This resulted in 1,013 Heating Degree Days (HDDs), and 0 Cooling Degree Days (CDDs). They compare to last year's average high of 48° F and average low of 30° F. This resulted in 815 HDDs and 0 CDDs.

• **ENERGY STAR® Rebates** – In 2022, all ENERGY STAR refrigerators/freezers (with recycling), electric clothes dryers, dehumidifiers, central air conditioners, air and ground source heat pumps, light emitting diode (LED) bulbs purchased (limit 5) are eligible to receive rebates (may not be combined with special promotions). Rebate request forms must be submitted within 90 days of purchase. Rebate forms are available at [www.swce.coop](http://www.swce.coop). For more information or to receive a rebate request form, phone Cindy Butterfield at 446-4204 or 800-526-3514.

• **Steele-Waseca's tree service contractor** – Carr's Tree Service, Inc., is contracted to do SWCE's tree trimming. To report a tree concern, phone:

**507-451-7340 / 800-526-3514**

STEELE COUNTY TIP LINE

**866-878-7964**

TO BE USED TO REPORT ANY CRIME OR SUSPICIOUS ACTIVITY ANONYMOUSLY

COVERS ALL OF STEELE COUNTY INCLUDING THE CITIES OF:

OWATONNA ELLENDALE  
BLOOMING PRAIRIE MEDFORD



## health & safety connection

### KW Saves kWhs: Water Heating Expenses

Water heating is a major contributor to your total energy consumption.



Other than purchasing an energy efficient water heater, there are three methods of reducing your water heating expenses: you can simply use less hot water, turn down the thermostat on your water heater, or insulate your water heater and the first six feet of hot and cold water pipes.

If you are considering replacing your water heater with an efficient model, you should keep in mind two factors: the type of water heater that meets your needs and the type of fuel it will use. For example, tankless water heaters are energy efficient, but they are also a poor



**NEVER** use water to extinguish an electrical fire. Use a fire extinguisher or baking soda instead.

May is National Electrical Safety Month

plug into safety

choice for large families as they cannot handle multiple and simultaneous uses of hot water. Efficient water heaters can be anywhere between 8% and 300% more energy efficient than a conventional storage water heater. 1071916

Check out Steele-Waseca's water heater program at [swce.coop](http://swce.coop).

#swceGROWTH

## 5 STEPS FOR SAFE DIGGING

Working on an outdoor project? Always call 8-1-1 first, because you never know what's below. Here are five easy steps for safe digging:

Source: call811.com

### 1. NOTIFY

Call 8-1-1 or make a request online two to three days before you start.



### 2. WAIT

Wait two to three days for a response to your request. Affected utilities will send a locator to mark any underground utility lines.



### 3. CONFIRM

Confirm that all affected utilities have responded by comparing the markers to the list of utilities the 8-1-1 call center notified.



### 4. RESPECT

Respect the markers provided by the affected utilities. They are your guide for the duration of your project.



### 5. DIG CAREFULLY

If you can't avoid digging near the markers (within 18-24 inches on all sides, depending on state laws), consider moving your project.



### Gopher State One Call

Whether it's simple like planting a tree, or installing a mailbox, contacting Gopher State One Call (GSOC) before starting your project may allow you to avoid costly damages to underground facilities. GSOC is not responsible for contacting locators to paint or flag your private facilities. Steele-Waseca Cooperative Electric also doesn't locate private underground facilities that are the homeowner's responsibility. Private underground facilities usually include any that serve outbuildings, hot tubs, security lighting, pools, and natural gas grills. Other private facilities include natural gas farm taps, private water systems, data communication lines, and invisible fences. The contact information for a number of locating companies who will locate privately owned underground facilities on your property can be found in the industry directory at [www.gopherstateonecall.org/homeowners](http://www.gopherstateonecall.org/homeowners), then click on "Private Utility Locators." This list is by no means an exhaustive list or a list of locators recommended by GSOC. For additional locators, consult a search engine, like Google, or refer to the Yellow Pages under "Utilities Underground - Locating." Remember, private locators will charge a fee for their services. No one should ever remove flags before work is completed for the safety of all digging in the area. If you come in contact with an underground utility, evacuate the area, call 911, then notify your utility provider.

#swceCOOPERATION



# ad connection

## give away

**SINGER SEWING MACHINE**, runs good. 363-6503.

**GARDEN TILLER**, needs carb. work. 456-8520.

**FREE ONLINE CLASSIFIEDS**, you place & remove your own ad on SWCE's website, [swce.coop](http://swce.coop), these are separate from **Sparks** & will not appear in **Sparks** unless mailed, delivered, or emailed to SWCE.

**DEAD TREES** for firewood, you cut & haul, Owat. area. 256-684-1546.

**RED DAHLIA BULBS**. 334-6377.

## wanted

**LAND**, min. 3 acres, to build our home for retirement around the Lonsdale, Webster, Elko, Little Chic., or Nfld area. 612-979-2781 or [JC@RaelynRose.com](mailto:JC@RaelynRose.com).

**USED/WASTE OIL**, 200 gal. min., call to schedule a pickup. 420-7429/Quentin.

**FORD DIESEL SKID STEER**. 330-1849.

**GUNS; AMMO; JD MOWERS; TACKLE; ESTATES**. 279-0431/Mark.

**1000-GAL. LP TANK**. 573-1033.

**ALUM. BOAT LIFT** for my 20' boat, lift capacity should be at least 3500 lbs; **FLOE ALUM. DOCK/SECTIONS**. 612-817-3429.

**GREEN-TREATED ROUND WOOD POSTS**, 3.5-4". 210-8425/Richard.

**BARN, GRANARY, &/OR OUTBUILDINGS**, I remove to repurpose the lumber; **OLD TIN; BARN SIDING; LUMBER**. 330-0258/Tim.

**FREE FIELD STONE** for erosion control, will haul in pickup, Fbo/Shieldsville area. 254-3566.

**BUILDING SITE**, preferably 5-15 acres in the Bl. Pr., New Rich., Owat. triangle. 475-4244.

**USED CHAIN LINK FENCE**, 4' or 5' high. 744-2873.

**OLDER MANURE SPREADERS; OLDER MIXER MILLS**. 456-7742.

**BLK WALNUT LOGS**, will pay \$. 952-290-4408.

**SMALL CAST IRON MEAT GRINDER; PLANT POTS; BROODER HOUSE, KEROSENE LANTERN**. 952-290-0059.

## All area codes are 507 unless otherwise noted

**JUNKERS OR REPAIRABLES**, trucks or cars, top \$ paid. 332-2300.

**PINBALL MACHINE**, working or not, any age or condition. 612-327-0255.

**FERTILE CHICKEN EGGS** for hatching. 334-6377.

**PINBALL MACHINES**, working/non-working, will pickup, paying \$, no slot machines/video games. 920-723-4969.

**UNWANTED BIKES & LAWN MOWERS**, \$ pd on delivered. 330-3178.

## for sale

**(4) PELLA WINDOWS**, new,\$450 for all 4. 210-3782.

**1989 HD 1200 SPORTSTER**, \$2400/obo; **MAS-SAGE TABLE**, height adjustable, like new, \$75. 390-0279.

**TREE TRIMMING, REMOVAL, & STUMP GRIND.**, pro climber & aerial lift to U of M guidelines; **2007 FRONT CHROME BUMPER** for an F-650, like new. 456-1609.

**9T BIN w/auger & motor; WATER HEATER**, 50 gal.; **STORAGE FOR RENT**: boats, RVs. 475-2322.

**TORO RIDING LAWN MOWER**, purchased in 2015, \$2100; **LAWN DETHATCHER**. 334-8613.

**JD 530/630/730 ROLLOMATIC FRONT END**, vry gd cond., \$750; **ANTIQUE CLIPPER GRAIN & SEED CLEANER**, wrks great, \$750. Email: [eakerdr@gmail.com](mailto:eakerdr@gmail.com).

**CLIMATE CONTROLLED UNITS FOR RENT**, 11'x9' to 16'x10'. 332-4623.

**ALFALFA/GRASS MIX HAY BALES**, full size, small square, great quality, no rain. 451-2978.

**RENTAL**, Izaak Walton League Bldg., 4 mi. south of Owat., seats 100, full kitchen, grill, Wi-Fi, \$125. 451-7946.

**SHINGLING & LIGHT CONSTRUCTION; TREE REMOVAL**, free estimates. 456-0296.

**GRASS HAY BALES**, small square, by Waldorf. 327-3672.

**20' SHOREMASTER PONTOON LIFT w/canopy** located at French Lk (Fbo), \$5000. 651-983-8410/Ron.

**17' CRESTLINER FISH HAWK**, 50-hp Merc., trolling motor. 491-6551.

**GRAVEL TRUCK AVAIL.** for all your delivery needs: rock, gravel, dirt, etc., 15.5-ton capacity. 456-7774.

**16' LUND FISHING BOAT**, trailer w/20-hp Johnson, (3) seats, trolling motor, depth finder, anchor lights, bilge, cover, \$1350. 612-532-4384.

**KARRITE ROAD RIDER CAR ROOFTOP CARGO CARRIER**, 3'x4'x18", gd cond., high density polyethylene shell, no leaks, side opening w/lock brackets, \$50/obo. 301-9965.

**FORTUNE CREEK TRL LOTS**, the covenant allows for a pole shed, starting at \$75,000. 838-5033/John.

**8' FIELD DIGGER**, 3 point. 334-9583.

**KATAHDIN HAIR SHEEP; HEREFORD BULLS**. 451-2722.

**EVERYTHING NEEDED TO BUILD A NICE 8'X24' GALVANIZED BACKSTOP**, clean chain link & pipe. 451-5121.

**MINI STORAGE UNITS**, Blmg Prairie. 456-2957.

**60" SWISHER PULL-BEHIND FINISH MOWER**, used vry little, like new. 456-8520.

**(6) COOPER DISCOVER ST MAXX TIRES**, 10 ply, 235/85/R16, 1/3 tread left, \$150/obo. 323-4362.

**GE DEHUMIDIFIER**, like new, 30 pt, located at Roberds Lk, \$125. 612-805-3033.

**GRASS HAY BALES**, sm. sq., \$4/ea. 612-756-1131.

**BEACHFRONT VACATION CONDOS FOR RENT** in Fort Myers Beach, South Padre Island & Mexico, visit [www.sandysbeachfrontcondo.com](http://www.sandysbeachfrontcondo.com) for details & photos. 612-865-9604/Sandy.

**2006 PRIUS**, gd tires, new battery, fresh tune, oil & all filters, 301,000 mi., vry reliable, \$3800. 838-5616.

**(38) STEEL ROOF SHEETS**, used, 19' long, burgundy, gd cond. 744-2709.

(For Sale ads continued on Page 7)

## travel

**SUMMER ON THE MISSISSIPPI**, June 22-25. By deluxe motor coach, 6 meals, guided tours, lunch cruise, Circa 21 Dinner Theater, "Beauty and the Beast," and more! \$759 pp w/2 per room.

**AUTUMN IN NEW ENGLAND**, Oct. 6-15. Delta Air to New York City, 2 nights at Millenium Hotel, Broadway show, cruise eastern seaboard to Canada, scenic ports, & more! \$3,599 pp w/2 per room.

**HOLIDAY BRANSON**, Nov. 15-19. Deluxe motor coach, 4 n, 8 meals, Miracle of Christmas at Sight & Sound Theatre, Christmas shows w/Doug Gabriel, Dutton Family & more! \$939 pp w/2 per room.

**Call 4-Seasons at 373-4705 or 373-2473, from 9 a.m. to 5 p.m. weekdays, to learn more about their tour information.**



## Sparks Free Classified Ad Form for all SWCE Members

Ads need to be received in our office **by May 5** to ensure being printed in the June *Sparks*. **Please print neatly or type your ad of 20 words or less** on this form. We reserve the right to edit ad copy to allow space for more ads. Ads received after the 5th will be printed in the July issue.

For Sale  Wanted  Give Away

\_\_\_\_\_  
\_\_\_\_\_  
\_\_\_\_\_

Phone # \_\_\_\_\_ Account # \_\_\_\_\_

Name \_\_\_\_\_

Clip and mail to: SWCE, P.O. Box 485, Owatonna, MN 55060-0485, deliver to the SWCE office, or email your ad to: [sparks@swce.coop](mailto:sparks@swce.coop).

## ad connection

(For Sale ads continued from Page 6)

**LATHAM RASPBERRY PLANTS**, you dig them, \$1.50 per plant. 581-2301.

**QUILTED WALL HANGINGS**, new, beautiful, hand quilted, \$35-\$75. 334-6362.

**KRAUSE 15' OFFSET DISC** w/JD cylinder & weights, nice shape, \$1400; **18' DIGGER** w/cylinder, good teeth, \$375. 456-7614.

**17' ALUMACRAFT CANOE** w/factory motor mount & trailer built for canoe; **MERCURY VAPOR YD LIGHT**. 465-8566.

**SWANN ENFORCER 4-CAMERA SECURITY SYSTEM**, new in box, \$250. 380-1517.

**24' LOWE PONTOON** w/55-hp Johnson outboard motor on trailer, motor & trailer newly updated, new gearbox, running lights, \$5500. 390-8394.

**4 X 5 ROUND MIXED GRASS BALES OF HAY**. 451-5131.

**IH PLANTER** w/monitor air, 8 row, 30", \$1800; **1979 CHEV C60 TRUCK**, 16' box & hoist need work, \$1800; **HYDUMP**, needs cylinder work, \$4500; **DRAG SECTIONS**, \$50 a piece. 456-1181.

**AGRI-PAK 8-QT STRAWBERRY FLATS**, \$20 per 50-count bundle. 210-5526.

**ENGINES, TRANSMISSIONS, USED AUTO & TRUCK PARTS**, 30-day warranty on eng. & trans. 332-2300.

**MINI STORAGE UNITS**, Ellendale. 456-1460.

**55-GAL. BOWED FISH TANK & STAND**, \$100; **WELDING CABLES**, positive & ground AC-DC w/ends, \$225/obo. 491-2667.

**HERITAGE RASPBERRY PLANTS**, \$25 per dozen. 465-8593.

**WESTFIELD AUGER**, 46' 8"; **18' BURCH DISC**. 583-2026.

**SEASONED FIREWOOD**, \$100 per standard pickup load, or smaller amounts available for campfires. 323-1539.

**KATAHDIN SHEEP RAM & EWE LAMBS** born March. 612-801-2969/Rory.

**(2) CUB CADET LAWN MOWERS; IH H TRACTOR** w/7' mower. 528-2856.

**CASE IH 600 BLOWER**, 540 PTO, few hrs, \$1500. 651-210-6897.

**16' LUND FISHING BOAT** w/25-hp Johnson, new swivel seats, Minn Kota trolling motor, depth finder, anchor, lights, oars. 451-9445 or 413-2819/cell.

**ASHFORD SPINNING WHEEL**, silver beech, orig. flyer, (4) bobbins & lazy kate, \$350. 301-9965.

**1978 14' LUND ALUM. BOAT** w/(2) Lund seats, new tires on trailer, 25-hp EL Mercury motor, \$1200/obo. 581-6828.

**GEHL 2245 HAYBINE; JD 336 BALER** w/thrower; **GEHL 1865 RD BALER; IH 810 DUMMY HEAD**. 684-3136.

**FIBERGLASS TOPPER** for a 8' pickup box, high back design for easy in & out, mint cond., maroon & white in color, \$50. 330-3856.

**1938 FORD PICKUP**, in primer, 4 spd, drives like a new pickup, \$26,999; **16' LUND FISHING BOAT**, 25-hp Mercury motor, lots of goodies, \$2650. 327-2741.

**FUJI THRILL**, 26x175, 21 spd, \$100; **TREK BOY'S**, 16x175, \$40; **TREK GIRL'S**, 20x175, \$40. 330-3178.

**EGGS** from non-caged chickens, chemical-free feed, \$2.50/dozen. 461-9422.

**HONDA 300 FOURTRAX**, new carb. & fuel shut-off, \$1400; **OAK & CERAMIC TILE VANITY TOP**, 21"x39" w/sink, faucet, & drain, \$40. 451-9614.

**A-C 185 TRACTOR/CAB**, gd rubber, handy diesel tractor for around the farm. 528-2252.

**AIR COMPRESSOR; TENOR & BARI SAX; SNAPPER TRIMMER; BCS SHREDDER; 12-SPD TREK BIKE; FILTER QUEEN VAC; 6' BOOKCASE; FILE CABINET**, metal, (2) drawer. 461-3450.

**CRITERION CHEST FRZR**, new, white, man. defrost, 44.1"x25"x32.9", \$290; **NEXGRILL PROPANE GRILL**, stainless steel, 4 burner w/side burner & condiment rack, enclosed grill cabinet, \$100. 323-5207.

 #swceAPPRECIATION

Steele-Waseca Cooperative Electric (SWCE) assumes no liability for the content of, or reply to, any item posted. The party posting any advertisement assumes complete liability for the content of, and all replies to, any advertisement and for any claims against SWCE as a result thereof, and agrees to indemnify and hold SWCE harmless from all costs, expenses, liabilities and damages resulting from, or caused by, any advertisement or reply thereto.

ENERGY WISE  MN

Visit [energywisemn.com/promotions](https://energywisemn.com/promotions) to learn more and complete a quiz for your chance to win a \$500 energy credit!

## WHETHER TEMPS RISE OR FALL, YOUR ENERGY BILL WILL STAY COOL.

Take advantage of these hot promo rebates when you install a qualifying, energy-saving air source heat pump!

Air Source Heat Pump	Promo Rebate
≥ 8.2 HSPF	\$1,000
≥ 9.0 HSPF	\$2,000

Air source heat pumps provide **home cooling and supplemental heating**, using **72% less electricity** than conventional air conditioners and furnaces.



Limited funds are available and awarded on a first-come, first-served basis. Rebate amounts and programs are subject to change without notice.

 #swceINNOVATION

(Offer expires June 30, 2022)

sparks • may 2022





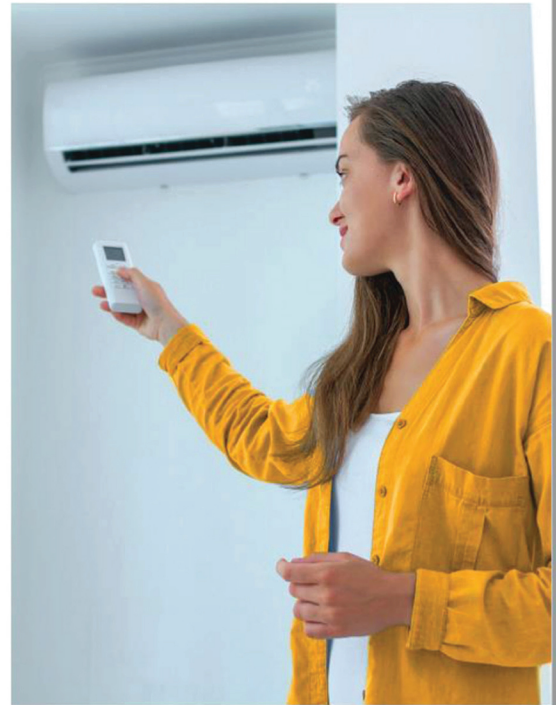
Visit [energywisemn.com/promotions](https://energywisemn.com/promotions) to learn more and complete a quiz for your chance to win a \$500 energy credit!

## WE PUMPED UP OUR REBATES SO YOU CAN SHRINK DOWN YOUR BILL.

Save energy at home when you install a ductless air source heat pump. And when you act now, you'll receive a supersized, limited-time rebate!

Ductless/Mini Split Air Source Heat Pump	Regular Rebate	Promo Rebate
Delivered fuels	\$100	\$450*
Electric heat	\$200	\$750*
*Minimum HSPF ≥ 9.0		

Air source heat pumps provide **home cooling and supplemental heating**, using **72% less electricity** than conventional air conditioners and furnaces.



*Limited funds are available and awarded on a first-come, first-served basis. Rebate amounts and programs are subject to change without notice.*

#swceINNOVATION

*(Offer expires June 30, 2022) 1029843*

### Annual Cogeneration Notification to Membership

In compliance with Steele-Waseca Cooperative Electric's (SWCE's) adopted rules relating to cogeneration and small power production, SWCE is obligated to interconnect with and purchase electricity from cogenerators and small power producers, whom satisfy the conditions as a qualifying facility. SWCE is obligated to provide information free of charge to all interested members upon request regarding rates and interconnection requirements. All interconnections require an application and approval to become a qualifying facility. Any dispute over interconnections, sales, and purchases are subject to resolution by the SWCE Board. Interested members should contact SWCE, 2411 W. Bridge St., P.O. Box 485, Owatonna, MN 55060-0485, or call 507-451-7340 or toll-free 800-526-3514.

#swceGROWTH



### Legislative Day at the Capitol

The Steele-Waseca Cooperative Electric board of directors met with area state legislators, March 15, during Legislative Day at the Capitol regarding issues impacting electric co-ops and their members. This meeting was with District 24 State Senator John Jasinski of Faribault. Pictured (left to right) is Jasinski, Steele-Waseca General Manager Syd Briggs, Board President Gary Wilson, Assistant Secretary/Treasurer Rodney Krell, District 8 Director Ron Sommers, District 4 Director Dennis Ringhofer, Steele-Waseca Executive Assistant Jenifer Shimpach, and District 1 Director PJ Duchene. #swceTRUST