


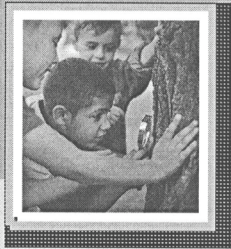
member connection

(Steps continued from Page 3)

STEP 5
It could be EAB.
Contact Arrest the Pest:
Arrest.the.pest@state.mn.us
1-888-545-6684 (Voicemail)



STEP 6
It isn't EAB; so, what is it?
Visit the University of Minnesota Extension
"What's Wrong With My Plant" website to
diagnose the problem. You can also visit
your local forester or arborist.
www.extension.umn.edu/garden/diagnose



(New wind farm continued from Page 7)

emissions while remaining competitive.

The Emmons-Logan wind farm features more than 80 wind turbines that are capable of generating enough clean, renewable energy to power 80,000 homes. With the new project, GRE's wind capacity will include more than 600 MW.

Great River Energy met the requirements of Minnesota's Renewable Energy Standard in 2017, eight years ahead of the state requirement. In May 2018, GRE established a voluntary goal to provide its all-requirements member-owner cooperatives with energy that is 50 percent from renewable resources by 2030. The cooperative also set interim renewable energy goals of 30 percent by 2020, and 40 percent by 2025.



If you wish to reduce clutter and add convenience, you may elect to receive an email that your bill is available to view online. Log in to your online account at www.swce.coop, click on the "Alerts" tab, and check "Bill Notification," and "Electronic Only." Enter your email address and click "Update" to receive your bill notification by email instead of in the mail. 30657



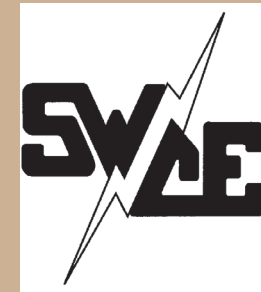
Buy one string of energy-saving LED holiday lights, get one FREE!

The holiday season is one of the most energy-intensive times of the year, but that doesn't mean you should keep your twinkling, strobing and glittering decorations packed away. Instead, use up to **90% less electricity** by switching from incandescent to durable, longer lasting LED holiday string lights. And now, we're making it easy to make the switch with a **buy one, get one free offer**—available to the first 200 members. Offer begins November 1, 2019.

ENERGY WISE  MN

Take advantage of this BOGO offer while supplies last!

Give yourself the gift of energy savings at energywisemnstore.com.



the power of human connections

sparks

Your Touchstone Energy® Cooperative 

a monthly newsletter from Steele-Waseca Cooperative Electric

November 2019

VETERANS DAY
Honoring All Who Served
We Thank You For Our Freedom!



Steele-Waseca Cooperative Electric wishes to remind our member-owners the office will be CLOSED on Monday, Nov. 11, in observance of Veterans Day. Please mail your energy payment early to ensure the co-op receives it by the due date.

inside connections

- 2 Manager Connection
- 3 Emerald Ash Borer impacting Steele County area
Christmas for Veterans in Owat.
- 4 Cookin' Connection
SWCE community solar update
Sparks in brief
Steele County Tip Line
- 5 Deer stands not allowed on utility poles
Harvest season safety tips
Aurora Luth. Church Oyster-Chili Supper
Electricity remains a good value
- 6 Ad Connection
4-Seasons Vacations
- 7 Ad Connection
SWCE seeking to lease farmland
GRE adding wind to energy portfolio
Are we controlling today?
- 8 SWCE electronic bill notification
Holiday light promotion starts Nov. 1

calendar of events

November

- | | |
|-------|---|
| 3 | Daylight saving time ends |
| 5 | Election Day |
| 11 | Veterans Day
SWCE office is closed |
| 28-29 | Thanksgiving holidays
SWCE office is closed |

Steele-Waseca Cooperative Electric announce appointments for 2020 Nominating Committee

The 2020 nominating committee appointments have been announced by the Steele-Waseca Cooperative Electric board of directors (see adjacent list).

It is the nominating committee's responsibility to prepare the list of director candidates, and post it at the cooperative's office at least 30 days prior to the annual meeting on Tuesday, June 2, 2020.

The election of directors will take place during the business portion of the annual meeting, held at Steele-Waseca's headquarters, located at 2411 West Bridge Street in Owatonna.

All Steele-Waseca members are eligible to serve as board directors. The governance role of directors can be summarized as being responsible for setting the overall policy, and monitoring the business affairs of the cooperative.

If you are interested in becoming a director, you may call Executive Assistant Jenifer Shimpach at Steele-Waseca, and a director nomination form will be sent to you.

Or, if you know another member who would make a good director, and you want him or her to be considered, please contact the nominating committee member nearest you. However, before you make the request, be certain the person will accept the position if nominated.

The Nominating Committee is scheduled to meet at the cooperative's office on Wednesday, Nov. 20, and Wednesday, Jan. 22, 2020. The committee would appreciate any assistance you can provide in helping them select director candidates. 15107

All Steele-Waseca members are eligible to vote each year for all expiring board director positions.

Steele-Waseca Cooperative Electric does not sell the mailing addresses, phone numbers, or email addresses of our members.

District 7

Peter Rohe	838-8136
Frank/Joyce Ahlman	334-8613
Lester/Jane Kroeger	835-3105

District 8

Keith/Carol Schrader	645-8181
Doug/Cindy Finch	390-0272
Bert Wiersma	684-9665

District 9

James/Patricia Pagel	333-5724
Jane Middlestadt	451-6187

The districts electing directors at Steele-Waseca's 84th annual meeting include the following:

- **District 7:** The Northeast and Southeast one quarters (NE & SE 1/4's) of Warsaw Township; the Northwest and Southwest one quarters (NW & SW 1/4's) of Walcott Township; the Northwest, Northeast and Southeast one quarters (NW, NE & SE 1/4's) of Wells Township in Rice County. (Represented by [John Beal](#))

- **District 8:** Kenyon Township in Goodhue County; Richland, Wheeling, Cannon City, Bridgewater, Upper Bridgewater and Northfield Townships, and the Northeast and Southeast one quarters (NE & SE 1/4's) of Walcott Township in Rice County. (Represented by [Ronald Sommers](#))

- **District 9:** Forest, Webster, Wheatland Townships, and the Southwest, Northwest and Northeast one quarters (SW, NW & NE 1/4's) of Erin Township in Rice County. (Represented by [Renee Malecha](#)). ^{SW}

Published monthly by
Steele-Waseca Cooperative Electric
2411 W Bridge Street, PO Box 485
Owatonna MN 55060-0485
This institution is an equal opportunity provider and employer.

Website: www.swce.coop
Email: swce@swce.coop
Fax: 507-446-4242



Board of Directors

PJ Duchene District 1
Geraldine Lienke District 2
Duane Edwardson, *Chaplain* . District 3
Dennis Ringhofer District 4
Rodney Krell District 5
Gary Wilson District 6
President, GRE Director
John Beal, *Vice President* . . . District 7
Ronald Sommers District 8
Assistant Secretary/Treasurer
Renee Malecha District 9
Secretary/Treasurer

Management

Syd Briggs *General Manager*

Division Managers

Darla DeVries *Office*
David Lundberg *Finance*
Kim Huxford *Operations*

Office Hours

8:00 a.m.–4:30 p.m., Monday–Friday

Operations Office Hours

8:00 a.m.–3:30 p.m., Monday-Friday

**For Customer Service, Billing
Questions and Power Outages
Phone:**

507-451-7340 or 800-526-3514

Before calling to report an outage

1. Check fuses and circuit breakers in your home and on meter pole.
2. Check with your neighbors to see if they have power.
3. Look for possible causes such as a tree branch on wires, a broken pole, twisted wires, etc.

**To leave a non-emergency message
whenever SWCE's Office is closed:**

Phone 507-451-7340 or 800-526-3514
and listen to the prompts. Please have
your account number, phone number, and
name on the account available.

Call *Before* You Dig
Gopher State One Call
811 or 800-252-1166
48-hour notice required for **ALL**
underground cable locations

manager connection



By Syd Briggs,
General Manager

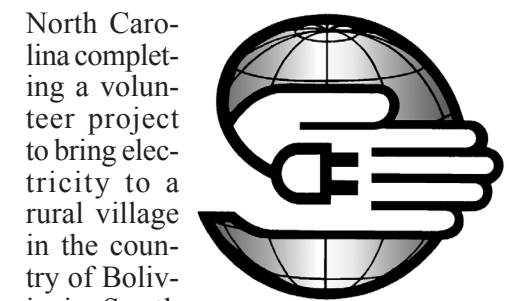
The members, directors, and employees of Steele-Waseca Cooperative Electric have a rich history of concern for the community, just as all cooperatives do across the United States. The cooperative nation has always looked beyond our local borders of cooperative, state, and even the nation in providing an enhanced lifestyle with the benefits of reliable power. We do all we can in our local area, and it is great to be part of a much larger effort through our national organization, National Rural Electric Cooperative Association (NRECA).

Since 1962, NRECA International has helped form 250 power utilities with the majority being electric cooperatives. They have brought electricity to more than 160 million people in 45 developing countries. NRECA International designs and implements successful, sustainable, scalable rural electrification programs that improve education, health care, safety, and economic opportunity. In reflection, the U.S. enhanced the lives of those in our country in those same areas over 80 years ago. 1018246

For those of you having attended recent town hall meetings, I have spoken about and showed a video of the work of NRECA International. NRECA's U.S. member cooperatives are committed to supporting cooperative development to empower communities in Latin America, Asia, and Sub-Saharan Africa. More than 300 NRECA-member cooperatives contribute time, money and materials to dozens of rural communities served by NRECA International projects.

Scores of co-op directors, linemen, engineers, managers and other employees spend weeks of their time every year to serve as volunteers in countries like Haiti, Guatemala, Costa Rica, Bolivia, the Philippines, South Sudan, and Uganda. They work with partner communities to expand electric access and build human capacity through a wide variety of volunteer assignments.

I recently came across an article by the Randolph Electric Membership Corporation entitled, "Let there be lights." It was the story of two electric linemen from



North Carolina completing a volunteer project to bring electricity to a rural village in the country of Bolivia in South America.

They served as part of the Brighter World Initiative team to build infrastructure to connect a village in central Bolivia to the electric grid. More than 120 people in the mountainous, agricultural community now have access to improved education and economic opportunities, along with power for their homes and local school.

According to Crew Foreman Dennis Kidd, "Many of the villagers were so eager to have electricity that they were willing to move their current homes if they were in the way of where power poles needed to go." Adding, "They had been waiting for the construction of bringing electricity to their town for over 10 years and they wanted to do everything they could to make that possible."

The Brighter World Initiative brought together 13 expert lineworkers from seven North Carolina electric co-ops to build about five miles of power lines. Most of the work, including pulling long spans of wire and lifting heavy transformers, was done by hand, as access to trucks and machinery was limited. Local villagers worked with the team to help navigate challenging terrain, which included crossing a 2,000-foot ravine.

America's electric co-op workforce is connected to members, and line crews and staff volunteer time and resources as a direct expression of concern for community, which is among cooperative's seven principles. Co-op employees who travel far to volunteer their skills have come back changed and even more committed to continue the cooperative legacy and empower communities abroad and at home.

(Courtesy: NRECA International, and Randolph Electric Membership Corporation)

ad connection

(For Sale ads continued from Page 6)

ALL AMERICA PRESSURE WASHER, 3@2000 PSI w/new TC1809 pump, hot water, \$2395. 583-2703.

POST POUNDING; CRP MOWING; CATTLE FENCE; HORSE FENCE; DEER FENCE. 475-0673.

500-GAL. DIESEL TANK w/elec. pump; **6T BIN** w/ auger. 475-2322.

2016 SUBARU CROSSTREK, AWD, dark gray ext., 42,000-mi., exc. cond., \$18,000; **5TH WHEEL PLATE HITCH** in bed of truck, \$350. 491-4565.

4-LOCAL CHURCH CHARITY BAZAAR, Sat., Nov. 2, 8:30 a.m.-1 p.m., at the community center at the Steele County Fairgrounds, baking, crafts, quilt raffle, & homemade lefsa, free coffee & cider for everyone.

2009 BIGHORN RV, 37', 5th wheel, washer/dryer combo, 50" LCD TV w/HD & surround sound, (3) slides, & fireplace, \$10,000/obo. 210-2737.

YAMAHA VINO CLASSIC SCOOTER, silver, like new, 1400-mi., \$1000. 334-3804.

WEIDER SKI MASTER XC-1 CROSS COUNTRY SKIER EXERCISE MACHINE. 838-8792.

1981 EL CAMINO, fully restored, \$4300 w/motor, \$2800 w/o motor. 491-2667.

1994 INNSBRUCK CAMPER, 20', (4) rear bunks, gd cond., \$2500. 334-2673.

GOOSENECK FEATHERLITE 3-HORSE TRAILER w/tack room & bunk area w/fridge, \$9500/obo. 456-1584/Dawn/leave message.

ELEC. STOVE, \$25; **(2) RECLINERS**, both for \$25; **LAMPS**, some brass, \$3-\$10; **OAK TABLE**, round, old; **MEN'S LEATHER COAT**, L, \$5; **MEN'S QUILTED SHIRTS**, L, like new, \$2.50. 451-0226.

CAR MANUALS: '79 Buick Regal, '77 Chev. Monza, \$5/ea.; **(4) '68 & (3) '81 PONTIAC CATALINA 14" HUBCAPS**, \$25/each (all in gd cond.). 838-8565.

BURLEY BIKE TRAILER, (1) seater, \$50; **3-BIKE REAR CARRIER**, 2" hitch, \$100. 330-3178.

Steele-Waseca Cooperative Electric (SWCE) assumes no liability for the content of, or reply to, any item posted. The party posting any advertisement assumes complete liability for the content of, and all replies to, any advertisement and for any claims against SWCE as a result thereof, and agrees to indemnify and hold SWCE harmless from all costs, expenses, liabilities and damages resulting from, or caused by, any advertisement or reply thereto.

Energy from new wind farm available Jan. 1

The electricity serving Steele-Waseca Cooperative Electric members just got even better as another wind energy project has been added to the mix.

The Emmons-Logan wind farm, located five miles northeast of Linton, North Dakota, will begin producing electricity Jan. 1, 2020, becoming the largest renewable resource serving Steele-Waseca. The 200-megawatt (MW) project will provide carbon-free electricity to members for the next 25 years.

The wind farm is the newest addition to the portfolio of resources for Steele-Waseca's wholesale energy provider, Great River Energy (GRE). Over the past five years, all of GRE's new energy resources have been renewable.

Great River Energy's carbon emissions have dropped 38 percent since 2005, and the cooperative continues to seek additional carbon reductions over time. Renewable energy, specifically wind, is GRE's least-cost resource, so energy has lower

(New wind farm continued on Page 8)

Steele-Waseca Cooperative Electric is accepting bids to lease 16 acres of tillable land exclusively for farming purposes. The lease would begin April 1, 2020, and terminate March 31, 2023. Rents shall be payable on April 1 of each year. Steele-Waseca Cooperative Electric reserves the right to reject all bids. If interested in receiving a bid request form, please email Jenifer at jshimpach@swce.coop or phone Jenifer at 507-446-4207 or 800-526-3514. Bids must be received at Steele-Waseca Cooperative Electric, 2411 W. Bridge St., Owatonna, MN 55060 by 3:30 p.m., Dec. 16, 2019.

(2) CATTLE GATES: 20' & 12'. 334-7756.

FARM SITE: 4-bdrm home, central air, 4-season porch, large shop/office, 60,000-bu. grain storage, on blacktop, W. Steele County. 461-0898.

GERMAN SHEP. PUPS, (5) males, ready by Nov. 15, \$550/ea. 612-756-1241/Jeramy.

OLIVER 770, diesel, less than 1000-hrs on engine, new injection pump & battery, runs great, wide front. 213-0254.

IH 886 TRACTOR, gd TA, 3-pt, 540/1000 PTO; **IH 656 TRACTOR**, diesel, gd TA, 540 PTO, 3-pt, 1504 hrs; **BUSH HOG® BRUSH MOWER**, 3-pt, 6'; **IH 12.50 DISC**, hydr. lift. 334-7995.

MT. DEW BOTTLES, many names; **OAK, WALNUT FRAMING MATERIAL**, many styles; **VINTAGE BOOKS; COLLECTABLE CUPS & SAUCERS**, many brands. 612-827-6575.

STORAGE on cement, 9-mi. east of Owa. 451-9445.

MANKATO TENT & AWNING FISH HOUSE, suitcase style, like new cond., \$200. 465-9918/4-7 p.m.

500-GAL. FUEL BARREL on stand; **ELEC. STOVE**, white, glass top, w/self-cleaning oven. 456-9409.

ENGINES & TRANSMISSIONS & MOST TRUCK & AUTO PARTS, 30-day warranty on eng. & trans. 332-2300.

100-GAL ALUM. SEMI FUEL TANK, new, \$250/obo; **55-GAL. STEEL DRUMS**, \$10/each; **POLARIS 550 SNOWMOBILE**, \$800. 380-4291.

'98 GOLDWING TRIKE & TRAILER, 1500cc, 34,000-mi., \$11,500/obo; **SCREENER** w/auger, \$250; **GRAVITY WAGONS**, smaller sizes, best offer; **MIXED FIREWOOD**, split, best offer. 456-1181.

(2) WOMEN'S ZEROXPOSUR WINTER COATS, XL & M, both blk, \$20/each; **MAYTAG DRYER**, LP. 330-0729.

LADIES SAS TIE SHOES, leather, new, made in the USA. 451-7626.

AGRI-FAB® LEAF MULCHER & BLOWER, 9-hp Briggs & Stratton motor, 26-bu., mow & vac, new/never used, \$875. 475-4584.

'75 GMC SIERRA CLASSIC, 3/4-ton, reg. cab, 454 motor, new starter, ring gear, \$4000/obo; **CASE IH MOLDBOARD**, fits 16" 179314 A1 diamond finish, \$175/obo. 451-5131.

SS SINK, dbl faucet; **METAL STORM W/SCREEN WINDOW**; **5-LIGHT DINING CHANDELIER**; **3-LIGHT VANITY LIGHT**; **MICROWAVE**, above stove, new. 993-9176.

1995 IH TRUCK, 16' box w/DT466 engine, \$10,000; **(2) TRACTOR TIRES**, new, 14.9x24, \$300; **JD 3010 TRACTOR** w/loader, \$7500; **CASE 85XT SKID LOADER**, 85-hp, 4500-hrs, \$20,000. 330-3945.

CARS WILL REPAIR SNOWBLOWERS, ALTERNATORS, STARTERS FOR FARM & AUTO USE. 213-7978 or 475-1311.

FEATHERWEIGHT WEED EATER, used vry little, has fresh engine tune up, \$30. 330-1253.

WESTINGHOUSE COMPUTER MONITOR, 19" flat screen, (2) speakers, keyboard, mouse & other accessories. 456-7757.

WIN. 25, 12-ga.; **WIN. 100**, 308; **14' ALUMACRAFT, TRLR & 2-DPTH FINDRS**; **OAK DISPLAY CASE**, 4' H, 32" W, 24" D; **ENCLOSED ICE FISHING SHED**, 3'x6'; **'84 CUTLASS**, V6, diesel. 451-7755.

WOOD, dry, mixed, split, in shed, \$100/pickup load; **CHAIN SAW SHARPENER** on stand, \$50; **12V PWR WHEEL BATTERY CHARGER**, \$20. 527-2307.

TANDEM AXLE TRAILER, 20', small dovetail, wood floor, made from trailer house frame, \$1200/obo. 451-9614.

36" UNIVERSAL SNOWBLOWR for garden tractor, \$100; **275-GAL. DIESEL BARREL** on stand, \$100; **PRIDE OF THE FARM WATERER**, \$75; **ANTIQU. WINDOWS**, old, \$3/5-pane & \$2/1-pane. 527-2529.

**Is my off peak/dual fuel
being controlled today?**

**Visit Great River Energy's
website at
www.greatriverenergy.com
and click on
"Load Management"**

**Need a history of controls?
Click on "History" on the
"Load Management" page**

ad connection

give away

HOMEMADE SLED to pull behind a snowmobile for hauling ice fishing supplies, in grt shape. 456-8330.

DUAL 3-STRING DULCIMERS mounted together, 2-people can play together, made by "The Dulcimer Lady," has cover. 202-6845.

EMPTY WOOD WIRE SPOOLS, various sizes. 451-7340.

WOOD POST. 334-7756.

BARN KITTENS, (6) avail., Hayfield. 703-585-7927.

FREE ONLINE CLASSIFIEDS, you place & remove your own ad on SWCE's website, swce.coop, these are separate from Sparks & will not appear in Sparks unless mailed, delivered, faxd or emailed to SWCE.

wanted

INT 6' TANDEM DISC, pull type. 339-3745.

CRAFTERS for 20th Ann. Christmas for Veterans Homemade Craft & Bake Sale, Nov. 2, at Trinity Luth. Church, Owat., booth rentals are \$30/booth, donations welcome anytime during the yr. 271-3596.

OUTBUILDING PAINTING JOBS for Fall 2019. 213-4641.

UNWANTED BIKES & LAWN MOWERS, \$ paid on delivered. 330-3178.

WINDMILL TOWER, farm type; **TRACTOR TIRE**, 14.9x38. 952-652-2933.

TO HIRE: straight truck fuel driver, semi truck fuel hauler, home every night, HQ in Shakopee. 952-884-4100.

FRONT END LOADER & BUCKET for a Case 970 snowblower w/hydraulic spout. 456-0296.

JUNKERS OR REPAIRABLES: cars, trucks, most farm & constr. equip., top \$ pd for junkrs. 332-2300.

FREE FIELD STONE ROCKS. 330-0293.

ROLLERS/RAILING HARDWARE for machine shed doors, can make new doors. 213-1466.

GARDEN TILLER; PTO, fit Ford-Ferguson tractor, 4-5'. 685-4372.

HINIKER 1300 TRACTOR CAB FOR PARTS, like on a JD 4020 or IH 806. 384-7553.

Sparks Free Classified Ad Form for all SWCE Members

Ads need to be received in our office by **November 5** to ensure being printed in the December Sparks. Please print neatly or type your ad of **20 words or less** on this form. We reserve the right to edit ad copy to allow space for more ads. Ads received after the 5th will be printed in the January issue.

☐ For Sale ☐ Wanted ☐ Give Away

Phone # _____ Account # _____

Name _____

Clip and mail to: SWCE, PO Box 485, Owatonna MN 55060-0485, or fax to: (507) 446-4242 or email your ad to: sparks@swce.coop.

All area codes are 507 unless otherwise noted

for sale

MINI STORAGE UNITS, Blmg Prairie; **(2) 15,000-BU. BINS FOR RENT**, full floors & fans. 456-2957.

2000 KAWASAKI ZX-12R, showroom bike, 15,000-mi., \$7000/obo; **1984 YAMAHA SS440**, clean & sharp. 444-9640.

BEACHFRONT VACATION CONDOS FOR RENT in Fort Myers Beach, South Padre Island & Mexico, visit www.sandysbeachfrontcondo.com for details & photos. 612-865-9604/Sandy.

16.9-38 BAND DUALS w/hardware, 50% tread, \$75; **15.5-38 BAND DUALS** w/hardware, 50% tread, \$75. 456-7614.

HVY DUTY TRAILER, 8'x16', (2) 7500-lb. axles, new tires, \$1700; **SCOOTER**, 150cc, \$400; **WHEEL-HOUSE FISH HOUSE**, 6x10, gd shell, needs floor, \$350. 456-9145.

TREE TRIMMING, REMOVAL, & STUMP GRIND., pro climber & aerial lift to U of M guidelines; **FRONT CHROME BUMPER** for an F-650, new. 456-1609.

2011 CHEVY, 1-ton, 4x4, \$14,000; **CLARK 8000-LB. FORKLIFT**, \$4500; **CUSHMAN 3-WHEEL CART**, \$650. 402-7679.

HOUSE & LOT in Owatonna, as is, \$70,000/obo. 213-1821/Jody/after 5:30 p.m.

FORTUNE CREEK TRL LOTS, covenant allows for a pole shed, starting at \$75,000. 838-5033/John.

2005 GMC 3500, 4x4, ext. cab, long box, goose-neck hitch, airbags, bed cover, leather, 166,000-mi., \$10,500. 332-8826.

GARDEN CART that dumps; **COMPRESSORS; SADDLES**, \$100/ea.; **KID'S PICNIC TABLE; SCAFFOLDING; EXTENSION LADDERS; DOUBLE COOLER** on legs. 612-978-1123.

MINI STORAGE AVAIL. IN FBO: 6'x8', \$49/mth; 10'x24', \$125/mth; **MINI STORAGE AVAIL IN MORISTWN:** 10'x20', \$99/mth. 333-0319.

2002 HONDA GOLDWING TRIKE MOTORCYCLE, 1800cc, vry nice cond., 39,575 mi., has trailer hitch, light connection. 213-6427/txt.

BLK ANGUS BEEF: qtrs, halves, or whole avail., semi-organically & locally raised. 330-2452/Matt.

VARIETY OF MEN'S & WOMEN'S OLD WEST/ FRONTIER CLOTHING incl. hats, skirts, vests, frocks, shirts, trousers & accessories.952-451-4821.

1975 CHEVY C65 TRUCK, tandem, diesel, reliable, \$7500; **1938 FORD PICKUP**, custom restored in gray premier, \$25,199; **2008 FORD TAURUS TRANSMISSION**, \$495. 327-2741.

RENTAL, Izaak Walton League Bldg., 4 mi. south of Owat., seats 100, full kitchen, grill, Wi-Fi, \$100. 451-7946.

'95 FORD HANDICAPPED VAN w/chair lift, 187K mi., new Pioneer radio/cd player, self-tightning tie downs, front & rear heat & a/c, exc. tires, min. rust, well maintaind, comes w/whlchair, \$3750. 338-1776.

MINI STORAGE UNITS FOR RENT in Ellendale. 456-1460.

ON-SITE GRAIN BIN AERATION DYNAMIC FAN BALANCING & VIBRATION TROUBLESHOOTING, www.cmttechnicalservices.com. 634-3409/Chuck.

CLIMATE CONTROLLED UNITS FOR RENT, 11'x9' to 16'x10'. 332-4623.

FIREPLACE STAINLESS PIPES, ASH CADDY TOOLS, STARTERS, CHIMNEY CLEANERS, \$50. 451-6695.

1996 YAMAHA WAVERUNNER II w/Sea Lion trailer, \$1500; **20' TRAILER**, hvy duty, triple axle 8000# each, flatbed w/loading ramps, 2 5/16" ball hitch, new tires, exc. cond., \$4500. 304-0903.

SHIPPING CONTAINERS, 20' & 40' lengths, rodent- & moisture-proof, store your stuff on your property. 612-418-4375.

CABELA'S WESTON 1-HP #22 COMMERCIAL GRADE ELEC. MEAT GRINDER, only used (5) times, \$550. 330-4694.

(For Sale ads continued on Page 7)

travel

SMOKY MOUNTAINS, Oct. 28-Nov. 4. Motor coach from Albert Lea, 7 nights, 15 meals, Grand Ole Opry, all day in Smoky Mtns, Dollywood, & much more! \$1,519 pp based on 2 per room.

HOLIDAY BRANSON, Nov. 12-16. Motor coach from Albert Lea, 4-nights hotel, 7-meals, Duttons, Daniel O'Donnell, Hughes Brothers, & more! \$869 per person based on 2 per room.

A CHRISTMAS CAROL WKND, Dec. 5-7. By mtr coach, 2-nights hotel, 3-meals, St. Olaf Christmas, A Wonderful Life Dinner Theater, A Christmas Carol at the Guthrie, & more! \$539 pp w/2 per room.

WESTERN CARIBBEAN CRUISE (AIR INCL.), March 12-21, 2020; 2-nights hotel, 7-night cruise on Sky Princess, Grand Cayman, Cozumel, Belize, & more! Starts at \$2,699 pp w/2 per stateroom.

Call 4-Seasons at 800-328-4298 and reserve space today! Be sure to tell us you are Steele-Waseca members!



member connection

Emerald ash borer impacting Steele County area

Residents of Steele County were invited to an open house by the Minnesota Department of Agriculture (MDA) Tuesday, Oct. 1, at the Steele County Administration Building's board room regarding the discovery of emerald ash borer (EAB) in the county.

Among those in attendance were Steele-Waseca Cooperative Electric Operations Division Manager Kim Huxford and Safety Coordinator/Member Service Representative Jack Schwab, who with others attending had an opportunity to learn more about EAB, local options to deal with the insect, and hear how residents can limit the spread of the bug. Experts were available at the meeting to answer questions. 1023338

Emerald ash borer information for homeowners may be accessed at <https://www.mda.state.mn.us/eab-info-homeowners>. Steele-Waseca is encouraging it's member-owners with ash trees in Steele and counties in the co-op's service area to become acclimated with the signs of EAB infestation, and whether treatment or removal of the tree(s) will be your best option.

The MDA explains it may be more cost effective to replace a small or struggling ash tree than to pay the cost of ongoing treatments. Trees in poor health are not likely to respond well to treatments. Do not treat trees showing more than 50 percent canopy decline; these ash trees are unlikely to recover even if treated. Check with a certified arborist or licensed professional pesticide applicator to compare the costs and benefits of treatment versus removal. Also check if your city or township may have requirements or restrictions related to the treatment of EAB.

20th Annual Christmas for Veterans Homemade Craft & Bake Sale

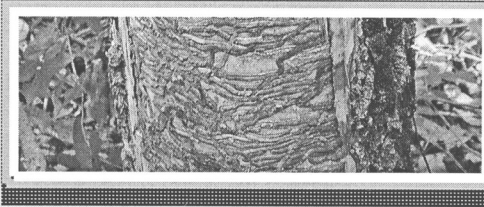
Saturday, Nov. 2
8:30 a.m. - 3:30 p.m.
Trinity Lutheran Church
609 Lincoln Ave., Owatonna

ALL proceeds from the booth rentals, donations, and the "Adopt a Veteran" project goes to buy gifts for all of the Veterans and Gold Star Moms living in the local nursing home of Owatonna.

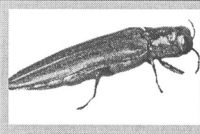


Does My Tree Have Emerald Ash Borer (EAB)?

STEP 1 I think my ash tree may be infested with EAB.
IF YES, GO TO STEP #3



STEP 2 I suspect I have seen an EAB.
IF YES, GO TO STEP #5



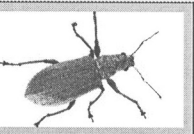
Emerald Ash Borer



Six-spotted Tiger Beetle



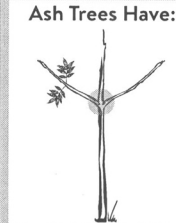
Japanese Beetle



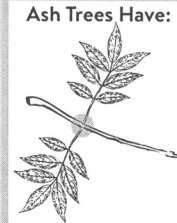
Polydrusus Weevil

Insects are NOT to scale.

STEP 3 Is my tree an ash?
IF YES, GO TO STEP #4 IF NO, GO TO STEP #6



Ash Trees Have: Opposite Branching



Ash Trees Have: Compound Leaves



Ash Trees Have: 5 to Many Leaflets

STEP 4 Does my ash tree have symptoms of EAB?
IF YES, GO TO STEP #5 IF NO, GO TO STEP #6

(Steps continued on Page 8)



Woodpecker Holes
Woodpeckers like EAB larvae and woodpecker holes may indicate the presence of EAB.



Bark Cracks
EAB larvae tunneling beneath the bark can cause the bark to split open, revealing the larval galleries beneath.



S-Shaped Galleries
The distinct S-shaped galleries under the bark are diagnostic of EAB.

cookin' connection

Chinese Turkey and Wild Rice

Gail Burke

Faribault

- | | |
|---------------------------------------|--------------------------|
| 1 c. cooked turkey, cubed | 1 c. chopped celery |
| 1 can cream of chicken soup | 3 Tbsp. soy sauce |
| 1/4 tsp. pepper | 1 small can mushrooms |
| 1 1/2 c. cooked wild rice | 2 medium onions, chopped |
| (1) 5 oz. can water chestnuts, cut up | 1 can water |

Mix all ingredients and put into a buttered casserole dish. Bake 1 hour at 350°.

Please use a 3 x 5 card when submitting your recipe. The member whose recipe is published will receive a \$7 energy credit. 1069285



Steele-Waseca Cooperative Electric's solar subscribers will see a 38 kWh credit per panel on this month's statement for energy generated during September 2019. Learn more about community solar and The Sunna Project by visiting Steele-Waseca's website, swce.coop.

Was your account number in Sparks?

Each month five account numbers are printed in *Sparks* and a total of \$35 in energy credits is divided among however many of those numbers are found. For example, if all numbers are found, a credit of \$7 will be applied to the members' following month's electric bills; or, if only one number is found, that member receives the full \$35 credit. Members finding their numbers who have a load management receiver on their dual fuel, electric water heater, air conditioner, or genset will receive an additional \$7 credit. When you find your number, phone our office no later than the 7th of the month following receipt of the *Sparks*, or the amount will be forfeited.

October issue of Sparks



Numbers found:
Ramona Adams

Numbers not found:
Bruce/Cheryl Thompson
Brent Neirby
Andrew Ebling
Jody & Michelle Jandt



Sparks in brief . . .

• **Want easy energy payments?** Sign up for **EnergyPay Plus**, our automatic payment plan, or **Energy Prepay**, our discounted advance payment plan. Contact our office for details. You may also pay your bill online at www.swce.coop. By entering your Steele-Waseca username and password you can also view a 13-month history of your account.

• **If you have changed or added phone numbers**, please contact SWCE to update your contact information.

• **Need a new water heater?** For information about our Westinghouse Electric Water Heater Program, phone Cindy Butterfield at our office between 8 a.m.-3:30 p.m., 446-4204 / 800-526-3514.

• **September temps** – The average high temperature for September was 74° F, while the average low was 57° F. This resulted in 97.5 Cooling Degree Days (CDDs), and 86 Heating Degree Days (HDDs). They compare to last year's average high of 74° F and average low of 55° F. This resulted in 109 CDDs and 130 HDDs.

• **ENERGY STAR® Rebates** – In 2019, all ENERGY STAR refrigerators/freezers (with recycling), electric clothes dryers, dehumidifiers, central air conditioners, air and ground source heat pumps, light emitting diode (LED) bulbs purchased (limit 5) are eligible to receive rebates (may not be combined with special promotions). Rebate request forms must be submitted within 90 days of purchase. Rebate forms are available at www.swce.coop. For more information or to receive a rebate request form, phone Cindy Butterfield at 446-4204 or 800-526-3514.

• **Steele-Waseca's tree service contractor** – Carr's Tree Service, Inc., is contracted to do SWCE's tree trimming. To report a tree concern, phone:

507-451-7340 / 800-526-3514

STEELE COUNTY TIP LINE
866-878-7964

TO BE USED TO REPORT ANY CRIME OR SUSPICIOUS ACTIVITY ANONYMOUSLY

COVERS ALL OF STEELE COUNTY INCLUDING THE CITIES OF:
OWATONNA ELLENDALE BLOOMING PRAIRIE MEDFORD

health & safety connection

Deer stands—be careful where you place them

Attaching deer stands to utility poles is never a good idea.

But did you also know having deer stands underneath high-voltage transmission lines is also a no-no? That's because it is a hazard to safety and reliability.

"We take care to remove dangerous trees, items and objects in our rights of way," said Craig Poorker, land rights manager for Great River Energy (GRE). "Deer stands in our easements are a safety hazard."

GRE, Steele-Waseca Cooperative Electric's wholesale provider of electricity for our legacy members, works with the North American Electric Reliability Corporation to adhere to standards for operating and maintaining power lines. If found in violation of

any standards (including deer stands in rights of way), Great River Energy can face fines in the millions of dollars.

Some reasons why deer stands and other buildings aren't allowed in rights of way include:

- The building may interfere with access to the line for maintenance and emergency repairs.

- A fire in a building within the easement area could damage the transmission line.

- A building may be closer to a line than electrical codes allow.

If you have a deer stand underneath a transmission line, please remove it, and hunt from the safety of the woods.



ANNUAL OYSTER - CHILI SUPPER

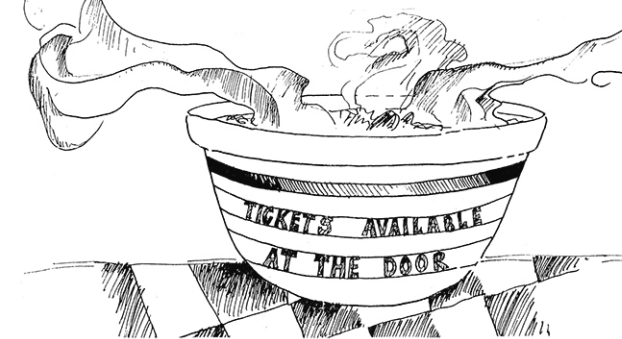
AURORA LUTHERAN CHURCH
6329 SE 38th St.
Owatonna, MN

SUNDAY,
NOVEMBER 24th, 2019
3:00 PM - 6:00 PM

HOMEMADE CHILI & OYSTER STEW

Oyster-Chili Combo..... \$13.00
Chili Only \$8.00
Children (6-12)..... \$5.00
5 and Under FREE

All You Can Eat!



Bake Sale items available.



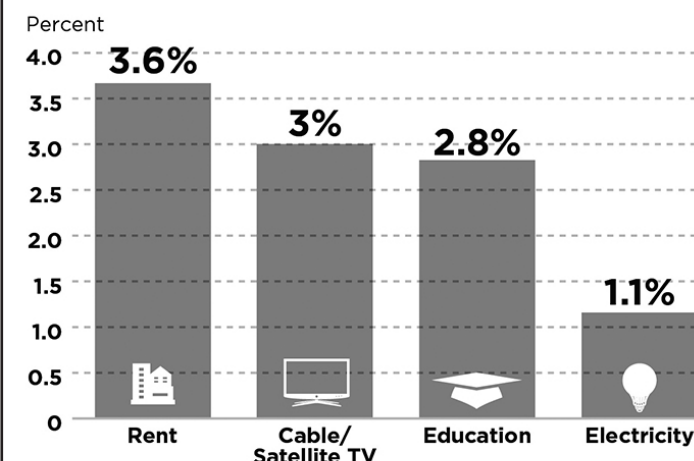
Know what's below.
Call before you dig.



ELECTRICITY REMAINS A GOOD VALUE

The cost of powering your home rises slowly when compared to other common expenses. Looking at price increases over the last five years, it's easy to see electricity remains a good value!

Average Annual Price Increase 2013-2018



Sources: U.S. Bureau of Labor Statistics
Consumer Price Index

