

member connection

(SWCE annual meeting continued from Page 1)



Steele-Waseca Cooperative Electric presented their 2019 Youth Tour delegates with a certificate and backpack during the annual meeting prior to their tour to Washington, D.C., June 15-20. Leah Transburg of Northfield was unable to attend due to final exams at Northfield High School, so her grandparents, Mary and Herman Transburg (pictured left), accepted on her behalf. Also pictured is Delegate Dawson Drentlaw (second from right) of Faribault, and Steele-Waseca Communications Specialist Randy Sobrack.

egates, Dawson Drentlaw of Faribault, and Leah Transburg of Northfield, were recognized as they travel with Minnesota's Youth Tour delegation to Washington, D.C., June 15-20.

Steele-Waseca General Manager Syd Briggs updated the membership on the business of the co-op during the past year with the recovery from storms on Sept. 20, 2018, and April 11, 2019. Briggs highlighted the success of POWRE (Power Optimized With Renewable Energy; and pronounced "Power"), the co-op's distributed generation rebate program introduced during last year's annual meeting for residential members seeking to install renewable energy systems at their service location.

Also highlighted were the enhanced rebates for air source heat pumps through June 30, 2019, and attendance during the past year at the co-op's town hall meetings.

At this year's ACRE (Action Com-



Steele-Waseca Co-op Electric Board Director Gerri Lienke presented a summer-themed gift basket to Pete DeGrood of Faribault after his name was randomly selected among those signing up to join ACRE prior to the start of the annual meeting.

mittee for Rural Electrification) booth, the newest members to join were: Don/Constance Abbe, Medford; Dave Bang, Owatonna; Curt Broughten, Owatonna; Chris Call, Owatonna; Pete DeGrood, Faribault; and Jessica Tuttle, Ellendale. DeGrood was randomly selected to receive a

summer-themed gift basket. Steele-Waseca Director Gerri Lienke spoke of the ACRE program to annual meeting attendees. ACRE participation supports elected officials who support legislation keeping electricity reliable and affordable for rural electric cooperatives.

The recipients of this year's Grand Prize drawings were: Bob Matejcek, Owatonna, \$100 Target gift card; Fritz Duban, Lonsdale, \$200 Lowe's gift card; and Pat Petricka, Faribault, \$300 Best Buy gift card (pictured left to right in the adjacent photo). In addition, drawings were conducted for the flowers displayed on stage during the annual meeting.

The Steele County Sheriff's Posse provided parking assistance and monitoring services during the meeting. Medical and safety assistance was provided by Gold Cross Ambulance of Owatonna. The Explorers of Owatonna, and students from the Faribault Middle School provided general assistance throughout the entire meeting. Shuttle transportation was supplied by Miner's Outdoor & Rec of Blooming Prairie (Steele-Waseca Line Technician Marshal Madery [pictured on the golf car in the adjacent photo] was among those from Operations providing shuttle service to members and guests attending the annual meeting). 27880

Following the annual meeting, the Steele-Waseca board of directors conducted their reorganizational meeting where the following officers were re-elected: Gary Wilson, president; John R. Beal of Faribault, vice president; Renee J. Malecha of Dundas, secretary/treasurer; Ronald D. Sommers of Northfield, assistant secretary/treasurer; and Duane R. Edwardson of Ellendale, chaplain.

Steele-Waseca's 84th annual meeting is scheduled for June 2, 2020, at the co-op's headquarters in Owatonna.



Great River Energy displayed an electric vehicle prior to the start of the annual meeting, and had information available for members and guests wishing to learn more.



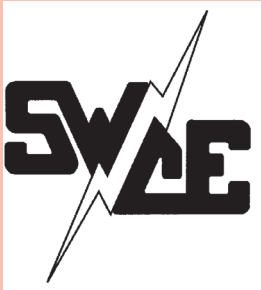
Retired Steele-Waseca employees Jerry Lewison, John Iverson, and John Kucera (pictured left to right in the above photo) handed out free popcorn to attendees prior to the co-op's annual meeting.



Zion Lutheran Church Ice Cream Social

7126 SW 98th St., Ellendale
Sunday, July 14, 2019
Serving 11 a.m. - 1 p.m.
Worship Service 9:30 a.m.

BBQ sandwiches, hot dogs, potato salad, calico beans, homemade pies, and ice cream



the power of human connections

sparks

Your Touchstone Energy® Cooperative

a monthly newsletter from Steele-Waseca Cooperative Electric

July 2019

inside connections

- 2 Manager Connection
- 3 SWCE announces scholarship recipients
- 4 Cookin' Connection
SWCE community solar update
Stray voltage questions
Sparks in brief
- 5 Gopher State One Call
Litomysl Summer Festival
- 6 Ad Connection
4-Seasons Vacations
- 7 Ad Connection
Air source heat pump promotion
- 8 SWCE Annual Meeting photos
Zion Lutheran Church Ice Cream Social

calendar of events

July

- 3-4 Blooming Prairie's Old Fashioned Fourth of July
- 4 Independence Day
SWCE office is closed
- 14 Zion Lutheran Church Ice Cream Social
- 16-21 Rice County Fair
- 17-21 Waseca County Fair
- 19 Steele Co. Relay for Life
- 26 Waseca Co. Relay for Life
- 26-28 Montgomery Kolacky Days
- 26-28 W. Concord Survival Days
- 27 Korean War ended in 1953
- 28 Litomysl Summer Festival

First Lutheran Church of Hope 100th Anniversary Celebration

Sunday, July 14

Worship 10:30 a.m.

Lunch 12:30 to 2:30 p.m.
Burgers/brats, potato salad, dessert, root beer floats
Free will donation

8953 SW 37th Ave., Hope

Board directors re-elected during Steele-Waseca Cooperative Electric's 83rd annual meeting

Three incumbent directors were re-elected to the Steele-Waseca Co-op Electric board, Tuesday, June 4, during the cooperative's 83rd annual meeting at its headquarters in Owatonna.

Re-elected to three-year terms were District 2 Director Geraldine G. Lienke, Janesville; District 4 Director Dennis C. Ringhofer, Owatonna; and District 6 Director Gary W. Wilson, Owatonna.

Co-op display booths, including an electric vehicle from Great River Energy (Steele-Waseca's wholesale energy provider for its legacy members), was on display for the 766 members and guests prior to the start of the annual meeting.

Steele-Waseca collected non-perishable items with donors receiving an LED bulb. The co-op wishes to thank those who donated 266 pounds of non-perishable items; and \$200 were collected and delivered to the New Richland Area Food Shelf.

Early Bird prize drawings were conducted for two \$250 travel certificates from 4-Seasons Vacations, Inc., of Albert Lea.

The recipients were Mary Lillquist of Faribault, and Chuck Kalisch of Lonsdale (pictured left to right in the adjacent photo above).



Christ the King Full and Handbell Choirs of Medford, under the direction of Melodie Morris, performed "The Star-Spangled Banner," during Steele-Waseca's 83rd annual meeting.



Elected to the Steele-Waseca board of directors, June 4, were incumbents (left to right): Gerri Lienke, District 2; Dennis Ringhofer, District 4; and Gary Wilson, District 6.

The annual meeting started with the Presentation of Colors featuring the local Color Guard and Faribault Middle School students, with those in attendance reciting the Pledge of Allegiance. "The Star-Spangled Banner," was performed by the Christ the King Full and Handbell Choirs of Medford. 16395

Steele-Waseca's 2018 Youth Tour delegate, Mallore McCarthy (pictured in the adjacent photo) of Minnesota Lake, shared her experiences in Washington, D.C. (fellow delegate Jessica Pieper of Owatonna was unable to attend due to final exams at Owatonna High School).

The co-op's 2019 Youth Tour del-

(SWCE annual meeting continued on Page 8)

the power of human connections

SWCE

sparks

Published monthly by
Steele-Waseca Cooperative Electric
2411 W Bridge Street, PO Box 485
Owatonna MN 55060-0485

This institution is an equal opportunity provider and employer.

Website: www.swce.coop
Email: swce@swce.coop
Fax: 507-446-4242

Find us on Facebook

Board of Directors

PJ Duchene District 1

Geraldine Lienke District 2

Duane Edwardson, *Chaplain* . District 3

Dennis Ringhofer District 4

Rodney Krell District 5

Gary Wilson District 6

President, GRE Director

John Beal, *Vice President* District 7

Ronald Sommers District 8

Assistant Secretary/Treasurer

Renee Malecha District 9

Secretary/Treasurer

Management

Syd Briggs *General Manager*

Division Managers

Darla DeVries *Office*

David Lundberg *Finance*

Kim Huxford *Operations*

Office Hours

8:00 a.m.–4:30 p.m., Monday–Friday

Operations Office Hours

8:00 a.m.–3:30 p.m., Monday-Friday

For Customer Service, Billing Questions and Power Outages Phone:

507-451-7340 or 800-526-3514

Before calling to report an outage

1. Check fuses and circuit breakers in your home and on meter pole.

2. Check with your neighbors to see if they have power.

3. Look for possible causes such as a tree branch on wires, a broken pole, twisted wires, etc.

To leave a non-emergency message whenever SWCE's Office is closed:

Phone 507-451-7340 or 800-526-3514 and listen to the prompts. Please have your account number, phone number, and name on the account available.

Call *Before* You Dig
Gopher State One Call
811 or 800-252-1166

48-hour notice required for ALL underground cable locations

manager connection

By Syd Briggs,
General Manager

Steele-Waseca Co-operative Electric was pleased with the sunny weather, Tuesday, June 4, for the co-op's 83rd annual meeting attended by 766 members, family, and guests.

Steele-Waseca gave members in attendance a \$30 "Power Perks" gift certificate, which enables them to utilize a credit up to \$30 at a participating member-owned establishment.

Members in attendance at the annual meeting received a \$50 Energy Star® certificate. This incentive is to encourage members to purchase products with the Energy Star label to enhance energy efficiency in their home.

In addition, members attending the annual meeting received a Steele-Waseca Padfolio folder with a paper tablet and pen; along with a Steele-Waseca pizza cutter.

It was a pleasure to introduce all our employees again to our membership. We have 32 employees totaling 519 years of service.

I wish to thank our members who brought a non-perishable item and/or cash for a local food shelf. In return for your donation of an item or cash, Steele-Waseca provided you with an Energy Star LED lightbulb. In all, 202 lightbulbs were handed out. The donations this year were delivered to the New Richland Area Food Shelf with totals consisting of 266 pounds of items and \$200 cash.

Those in attendance were updated on the challenges the weather had on our co-op providing reliable power to our members; 2018 was a difficult year for reliability and 2019 has already been worse. We went from 15 tornados in the Faribault area on Sept. 20, 2018, to a very severe ice storm in the southern half of our system April 10-11, 2019. Thanks to the crew and other employees, and their training, we got everyone back on line within a few days in both situations.

For the ice storm in April, I must also be thankful to the three other co-ops,

and two contractors that loaned Steele-Waseca a total of 42 employees along with poles and vehicles. I was glad to see the activity on our web page where many of you stayed aware of our progress in completing outage restorations. Because of the extensiveness of the outage, many of you continually looked at our outage section on our website, and were able to get a grasp of the progress each day.

We also had an increase onto our Facebook page to get real-time updates from customer-service personnel. Steele-Waseca appreciates the understanding from our members, and the well-wishes received for our crew that so many of you posted on Facebook

Attendees were updated on the co-op's POWRE (Power Optimized With Renewable Energy) program. It provides a rebate for distributed generation, which is usually solar or wind generation, in addition to the net metering credit when a member generates their own power. It was a huge success in lowering our carbon footprint, encouraging efficiency and conservation, and saving the cooperative money at the same time.

From June to December 2018, Steele-Waseca had 21 members participate in applying for the 250 kW available for the rebate. This year, the co-op had 15 sign up, and there is only 80 kW of that 250 kW remaining. If you have been considering the installation of solar or wind generation at your service location, please contact Steele-Waseca's Steve Nordahl as soon as possible, and before you make a decision to see if this program would be of interest to you.

Steele-Waseca has also greatly increased the rebates on air source heat pumps to as large as \$1,650. Many have taken up the co-op on the rebates, however, the enhanced rebates will end as of June 30, 2019. 33533

The co-op's Nominating Committee is constantly searching, and available for anyone with an interest to dedicate the time to serve on the board of directors. At Steele-Waseca we believe the best way to ensure an objective board is for the membership to lead in the search for appropriate board candidates. If you are interested in running for the board, or serving on the Nominating Committee, may I suggest you submit your name for service to the cooperative.

ad connection

(For Sale ads continued from Page 6)

(4) PATIO SWIVEL ROCKER CHAIRS w/cushions, \$50 each/obo. 789-6596.

(2) ALUM. BOAT LIFTS, 3500#, both wrk but need a little wrk, Lk Mazaska. \$250 ea./obo. 763-218-2948.

CLIMATE CONTROLLED UNITS FOR RENT, 11'x9' to 16'x10'. 332-4623.

2001 CHEVY MONTE CARLO, new tires, brakes & battery, real gd cond., silver, would make gd wrk or school car, 137,000 mi. 438-8635.

ANTIQUE CREAM-COLORED WEDDING GOWN, 69-yrs-old, size small, vry gd condition, best offer. 451-1180.

2002 HONDA GOLDWING TRIKE MOTORCYCLE, 1800cc, vry nice cond., 39,202 mi. 213-6427/txt.

1940s FARMALL H TRACTOR w/loader, bucket, tire chains, & snow cab, stored inside, best offer; LP DRYER, like new. 491-9259.

McCULLOCH 5700W GENERATOR, used once, (4) 120V & (1) 240V outlets, \$300. 272-8611.

2007 KEYSTONE SPRINGDALE 38' TRVL TRLR w/(2) slide outs, sleeps 10, gd cond., \$11,000; (4) 8' BANQUET TABLES, \$5/each; (40) METAL FOLDING CHAIRS, \$2/ea. 451-9445.

2002 DODGE DURANGO SLT, V8, 4.7L, (4) doors, blk, A/C, heater, interior seats, 3rd roll seats, 4x4, clean title, \$2500. 461-5812/txt.

STORAGE UNITS FOR RENT in Fbo, Morristwn, Dundas, Kasson, Byron, & Pine Island. 332-7557.

1981 DELTA 88 OLDSMOBILE FOR PARTS, gd 307 engine, new alternator, gd transmission, bad frame, best offer. 451-7837.

WeatherTech® FLOOR MATS, purchased for 2004 Chev. 1500 ext. cab pickup, may fit similar models, exc. cond., \$40. 456-0210.

'81 MACK GRAVEL TRUCK, 16' box & hoist, best offer; 1994 DODGE LP 1500 PICKUP; 1987 DODGE, 4-spd straight stick & topper; OLD FARM MACHINERY; MASSEY 880 8-BTM PLOW. 455-0895.

HEWITT ALUM. DOCK, 32', wheel kit, adjustable, French Lk, \$1950. 339-3821.

FIRST LUTHERAN YOUTH HOT DOG STAND, Sat., June 29, 11:30 a.m.-1:30 p.m., Ellendale City Park (Ellendale Days), all are welcome.

BEACHFRONT VACATION CONDOS FOR RENT in Fort Myers Beach, South Padre Island & Mexico, visit www.sandysbeachfrontcondo.com for details & photos. 612-865-9604/Sandy.

TRAILER, hvy duty, \$300; LOTS OF MISC. SHOVELS, RAKES, & HOES; (3) CHAIRS; SAWS, \$30. 664-9426.

TIMESHARE FOR RENT, (3) days or (1) wk, locations include: Branson, Wisc. Dells, FL, Tenn., SC, NC, ME, MS. 465-8194.

BELTED GALLOWAY COW/CALF PAIRS; BELTED GALLOWAY HEIFERS, STEERS, & COWS. 456-0121.

YARD CART for riding mower, 34x42, stored inside, great shape, \$125. 451-8498/leave message.

1995 STARCRAFT POP-UP CAMPER, sleeps (6), vry nice cond., \$2200. 213-1035.

KATAHDIN HAIR SHEEP, ewe & ram lambs; HEREFORD BULLS & HEIFERS. 451-2722.

(2) CEMETERY LOTS at Memorial Gardens (Owat.), \$350/each; (2) LOTS at Meadow Ridge (Fbo), \$350/each. 451-3462.

5TH WHEEL CAMPER, 21.5', sleeps-5, all accessories & truck bed att., ready to go, bst offr. 332-7294.

(4) GOLF CART TIRES ON RIMS, tire size 18x8.5-8, 4-bolt rims, standard size, 65% tread left, or better, white rims. \$110/cash. 491-4565.

JD 6300 MFW TRACTOR w/loader, \$20,000; JD 3010G w/loader, all restored, \$8500; 2016 FORD FOCUS, 18K actual mi., \$7500. 330-3945.

(2) 13.6 X 28 FIRESTONE TIRES on AC rims, near new, \$650; (2) 16.9 X 28 AC RIMS, \$600; WIDE FRONT for WD AC, \$400. 384-7553.

SCHWINN ALUM. COMP, 26x175, 21-spd, men's, F.S. Fork, \$100; TREK 7.1 HYBRID, men's, 700x35c, easy fire shifting, \$200. 330-3178.

1995 MITSUBISHI REAR PROJECTION TV, 48" screen, wood-tone cabinet, s-audio, video in, 3-cable, Blu-ray, \$50/obo. 814-440-7876/txt.

Steele-Waseca Cooperative Electric (SWCE) assumes no liability for the content of, or reply to, any item posted. The party posting any advertisement assumes complete liability for the content of, and all replies to, any advertisement and for any claims against SWCE as a result thereof, and agrees to indemnify and hold SWCE harmless from all costs, expenses, liabilities and damages resulting from, or caused by, any advertisement or reply thereto.

ENERGY WISE MN

Promotion ends June 30, 2019

SOME CALL THIS OFFER COOL. OTHERS CALL IT HOT. WE SAY, IT'S BOTH.

Cool and heat your home with an energy-saving air source heat pump AND receive a HOT promotional rebate!

ASHP	Regular Rebate	Promo Rebate
15 SEER	\$300	\$1,000
16+ SEER	\$400	\$1,650

Contact Steele-Waseca Cooperative Electric to learn more

Air source heat pumps provide home cooling and supplemental heating, using 72% less electricity than conventional air conditioners and furnaces.

Limited funds are available and awarded on a first-come, first-served basis. Rebate amounts and programs are subject to change without notice.

2

July19.indd 2

sparks • july 2019

7

6/7/2019 5:09:32 PM

ad connection

give away

LIVE RED ROOSTER. 201-919-3270.

EMPTY WOOD WIRE SPOOLS, various sizes. 451-7340.

FARM KITTENS: tiger, black & white, & all black. 475-2701.

BORDER COLLIE, spayed, "Delilah," Samson recently died & Delilah needs a companion. 475-1989 after 1 p.m.

HOMESCHOOL CURRICULUM BOOKS, all grades through high school, all subjects, many books about horses, some books have Christian or Catholic content. 213-6524.

FREE ONLINE CLASSIFIEDS, you place & remove your own ad on SWCE's website, swce.coop, these are separate from Sparks & will not appear in Sparks unless mailed, delivered, faxd or emailed to SWCE.

wanted

CLASS A CDL DRIVERS w/tanker endorsement & clean record, for veg. hauling starting in June. 456-1181.

USED CARPORT. 465-8244.

GAS-POWERED WOOD SPLITTER. 383-0027.

CRAFTERS for 20th Ann. Christmas For Veterans Homemade Craft & Bake Sale, Nov. 2, 8:30 a.m.-3:30 p.m., Trinity Luth. Church, Owa., donations welcome anytime during the year. 271-3596.

WILL DO COMPACT TRACTOR WORK: tilling, plowing, bucket work, & blade work. 451-6046.

GRANDPA'S OLD POSTAGE STAMPS for my collection; DUCK/WATERFOWL HUNTING STAMPS, singles or collection. 676-0970.

PINBALL MACHINES, paying \$, will haul away, working or non-working, no slots or poker machines. 920-723-4969/cell.

REPLACEMENT PARTS for 10x10 First Up canopy. 213-1035.

UNWANTED BIKES & LAWN MOWERS, \$ paid on delivered. 330-3178.

CHILDREN'S BOOKS/HISTORY BOOKS ETC., old or new. 684-2063.

All area codes are 507 unless otherwise noted

for sale

WHEEL HORSE 418A GARDEN TRACTOR, 18-hp Kohler engine, 810 hrs of use, includes 42" mower deck, hydraulic equip. lift & all orig. manuals, \$900. 952-836-6782/Bill.

(2) TORCH CYLINDERS, \$175/each; (1) OXYGEN CYLINDER, \$100; WIRE FEED WELDER CYL., \$175. 363-6622.

VARIETY OF MEN'S & WOMEN'S OLD WEST/ FRONTIER CLOTHING incl. hats, skirts, vests, frocks, shirts, trousers & accessories. 952-451-4821.

2017 CHEVY MALIBU, \$13,500; 26' DECKOVER TRAILER; 36' TRLR, living qtrs/hauler. 402-7679.

MAYTAG ELEC. CLOTHES DRYER, used vry little, like new cond., \$125/cash. 451-7626.

FORTUNE CREEK TRL LOTS, the covenant allows for a pole shed, starting at \$75,000. 838-5033/John.

(2) CEDAR POSTS, 12' long, 3.5x3.5, \$25/each. 583-2400.

5.30 X 12 WHEEL & TIRE, never used, rim has 5-holes, \$65. 952-652-2661.

SHINGLING; LIGHT CONSTRUCTION; TREE REMOVAL. 456-0296/free estimates.

BURGANDY SWIVEL ROCKER from Erickson's Furniture (Fbo), 36"(H), 25" wide, like new, \$150/obo. 838-8565.

EVAPORATIVE AIR COOLER, RKF 503, perfect for parties, \$75 per day (not including delivery & pick up). 583-2703.

RENTAL, Izaak Walton League Bldg., 4 mi. south of Owat., seats 100, full kitchen, grill, Wi-Fi, \$100. 451-7946.

25-ACRE BUILDING SITE; 105-ACRE FARM w/ bldg site, Fbo. 301-9694.

WHIRLPOOL MICROWAVE, over stove mount, \$25; RICHMOND ELEC. HOT WATER HEATER, 20-gal., 110W, \$50; FREE-STANDING WOODSTOVE, 27"x24", \$75. 334-9700.

WOODS ROTARY MOWER, 6', P.T.O., \$750. 330-5503.

MINI STORAGE UNITS, Blmg Prairie. 456-2957.

LP CONVERSION KIT, was used on 3000W Onan generator, \$60; ONAN GENERATOR w/bad motor, \$50. 465-8244.

TREE TRIMMING, REMOVL & STUMP GRINDING, pro climber & aerial lift to U of M guidelines; FRONT CHROME BUMPER for an F-650, new. 456-1609.

ON-SITE GRAIN BIN AERATION DYNAMIC FAN BALANCING & VIBRATION TROUBLESHOOTING, www.cmtechnicalservices.com. 634-3409/Chuck.

USED WOOD POSTS: (5) 6"x8', (9) 4"x6', \$40 for all; USED TREATED LUMBER: (10) 2"x6", 12' lengths, \$25 for all. 744-2792.

1986 RAWHIDE BUMPER PULL CAMPER, 22', good condition, newer tires, bunk beds, \$1500/obo. 612-355-9517.

3-RANGER 8 SMIDELY HOG FEEDERS; 1-RANGER 10 SMIDELY HOG FEEDR, (\$400/ea.); 2-PARKER 2600 GRAVITY BOXES w/Parker gears, like new, \$3500/ea.; NH 311 BALER, \$8000. 524-4637.

(2) JD B TRACTORS, \$1200/each; FARMALL M, \$1200; DONKEYS: (1) male, castrated, 22-yrs-old; (1) female, 15-yrs-old. 451-0653.

TRI-AXLE DUMP TRUCK AVAILABLE FOR ALL YOUR HAULING NEEDS: rock, gravel, dirt, etc., 15.5-ton capacity. 456-7774.

SHORESTATION ALUM. BOAT LIFT, 3600# cap., has wheel kit & 12V lift motor, \$1150. 951-2568.

PROFORM 450 LE ELLIPTICAL, like new, \$300/obo. 475-1737.

2008 NISSAN ALTIMA, 110,000 mi., leather, gd cond., \$4200. 319-8711.

LATHAM RASPBERRY PLANTS, you dig them, \$1/each; SURECROP STRAWBERRY PLANTS, 25-plants, \$2.50. 663-1275.

(For Sale ads continued on Page 7)

travel

MACKINAC ISLAND & DOOR COUNTY, July 8-15. By motor coach, 7 nights, 13 meals, tour Mackinac City & Island, Door County & Washington Island, & more! \$1,599 per person w/2 per room.

SUMMER ON THE MISSISSIPPI, July 24-27. By motor coach, 3-nights hotel, 7-meals, daylong cruise on Celebration Belle, tour John Deere Pavilion, dinner theater & more. \$679 pp, 2 per room.

LAKE SUPERIOR CIRCLE TOUR, Sept. 8-13. By motor coach, 6 nights, 8 meals, Thunder Bay, Sault Ste Marie, Pictured Rocks Cruise, Soo Locks Dinner Cruise, & more! \$949 pp w/2 per room.

WILD WEST TOUR, Sept. 15-23. By motor coach, 8 nights hotel, 13 meals, Buffalo Bill State Park, Cowboy cookout, Bison Ranch & Train tour, Little Bighorn, & more! \$1,899 per person w/2 per room.

Call 4-Seasons at 800-328-4298 and reserve space today! Be sure to tell us you are Steele-Waseca members!



scholarship connection

Steele-Waseca Cooperative Electric scholarships awarded to 15 "Class of 2019" graduates

Steele-Waseca Cooperative Electric has awarded \$500 scholarships to 15 high school seniors graduating in 2019.

A portion of the funds to support these scholarships come from unclaimed capital credit equity.

Steele-Waseca's scholarship program has awarded \$174,250 in scholarships since the program was established in 1954.

The recipients are a dependent of a Steele-Waseca member and will be attending a two- or four-year technical school or college this fall. This year's recipients include:

• **Heather Thompson**, Bethlehem Academy, the daughter of Renee Thompson, Morristown, and Jay Thompson, Elysian.

• **Payton Simon**, Blooming Prairie, the son of Jeremy and Amy Simon, Blooming Prairie.

• **Cassandra Kubal**, Faribault, the daughter of Rachel and Paul Kubal, Faribault.

• **Hannah Knudson**, Hayfield, the daughter of Steve and Salena Knudson, Hayfield.

• **Katelyn Schmidt**, Homeschooled, the daughter of Robert and Sarah Schmidt, Claremont.

• **Alexander Roberts**, Roberts Home-school, the son of Christopher and Daphne Roberts, Dodge Center.

• **Matthew Proehl**, Maple River, the son of Rick and Gena Proehl, Minnesota Lake.

• **Jade Pekarek**, Medford, the daughter of Trisha Pratt, Medford.

• **Brodee Kupp**, New Prague, the son of Douglas Kupp and Shanna Gutzke-Kupp, Lonsdale.

• **Tyler Jacobson**, New Richland-Hartland-Ellendale-Geneva, the son of Erik and Heidi Jacobson, New Richland.

• **Creegan Croone**, Northfield, the son of Craig Croone and Shelley Hansen, Northfield.

• **Dawson Ringhofer**, Owatonna, the son of Jason and Cassandra Ringhofer, Owatonna.

• **Bradley Kodada**, Tri-City United, the son of Kevin and Stacy Kodada, Lonsdale.

• **Gabriela Staub**, Triton, the daughter of Chris and Julie Staub, West Concord.

• **Joe Bushlack**, United South Central, the son of Chris and Betsy Bushlack, New Richland.



Heather Thompson



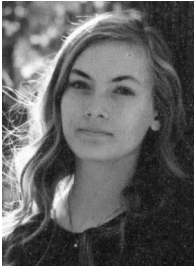
Payton Simon



Cassandra Kubal



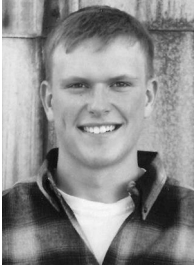
Hannah Knudson



Katelyn Schmidt



Alexander Roberts



Matthew Proehl



Jade Pekarek



Brodee Kupp



Tyler Jacobson



Creegan Croone



Dawson Ringhofer



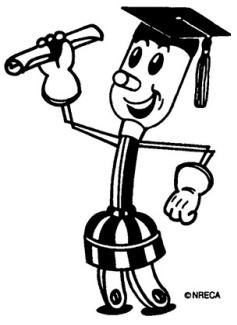
Bradley Kodada



Gabriela Staub



Joe Bushlack



Sparks Free Classified Ad Form for all SWCE Members

Ads need to be received in our office by July 5 to ensure being printed in the August Sparks. Please print neatly or type your ad of 20 words or less on this form. We reserve the right to edit ad copy to allow space for more ads. Ads received after the 5th will be printed in the September issue.

☐ For Sale ☐ Wanted ☐ Give Away

Phone # _____ Account # _____

Name _____

Clip and mail to: SWCE, PO Box 485, Owatonna MN 55060-0485, or fax to: (507) 446-4242 or email your ad to: sparks@swce.coop.

cookin' connection

Lemon Bundt Cake

Marti Cox

New Richland

1 pkg. yellow cake mix
1 pkg. instant lemon pudding
pinch of salt
3/4 c. oil
4 eggs
3/4 c. water

Glaze:
1 1/2 c. powdered sugar
6 Tbsp. lemon juice

Mix together ingredients and beat with electric mixer on high for 4 minutes. Bake in greased and floured Bundt pan for 45 to 50 minutes at 350°. Invert on cake plate and pour glaze over cake.

Please use a 3 x 5 card when submitting your recipe. The member whose recipe is published will receive a \$7 energy credit. 1027445



Steele-Waseca Cooperative Electric's solar subscribers will see a 46 kWh credit per panel on this month's statement for energy generated during May 2019. Learn more about community solar and The Sunna Project by visiting Steele-Waseca's website, swce.coop.

Was your account number in Sparks?

Each month five account numbers are printed in *Sparks* and a total of \$35 in energy credits is divided among however many of those numbers are found. For example, if all numbers are found, a credit of \$7 will be applied to the members' following month's electric bills; or, if only one number is found, that member receives the full \$35 credit. Members finding their numbers who have a load management receiver on their dual fuel, electric water heater, air conditioner, or genset will receive an additional \$7 credit. When you find your number, phone our office no later than the 7th of the month following receipt of the *Sparks*, or the amount will be forfeited.

June issue of Sparks

Numbers found:

No members found their number

Numbers not found:

Greg/Jan Jacobson
Kevin/Ruby Teague
Todd Neitzel
Vincent/Nicole Adams
Donnavon Eaker



Sparks in brief . . .

• **Want easy energy payments?** Sign up for **EnergyPay Plus**, our automatic payment plan, or **Energy Prepay**, our discounted advance payment plan. Contact our office for details. You may also pay your bill online at www.swce.coop. By entering your Steele-Waseca username and password you can also view a 13-month history of your account.

• **If you have changed or added phone numbers**, please contact SWCE to update your contact information.

• **Need a new water heater?** For information about our Westinghouse Electric Water Heater Program, phone Cindy Butterfield at our office between 8 a.m.-3:30 p.m., 446-4204 / 800-526-3514.

• **May temps** – The average high temperature for May was 64° F, while the average low was 45° F. This resulted in 348 Heating Degree Days (HDDs) and 15.5 Cooling Degree Days (CDDs). They compare to last year's average high of 76° F and average low of 55° F, which resulted in 112.5 HDDs and 112.5 CDDs.

• **ENERGY STAR® Rebates** – In 2019, all ENERGY STAR refrigerators/freezers (with recycling), electric clothes dryers, dehumidifiers, central air conditioners, air and ground source heat pumps, light emitting diode (LED) bulbs purchased (limit 5) are eligible to receive rebates (may not be combined with special promotions). Rebate request forms must be submitted within 90 days of purchase. Rebate forms are available at swce.coop. For more information or to receive a rebate request form, phone Cindy Butterfield at 800-526-3514.

• **SWCE's tree service contractor** – Carr's Tree Service, Inc., is contracted to do SWCE's tree trimming. To report a tree concern, phone:

507-451-7340 / 800-526-3514

LIVESTOCK OWNERS

If you have questions or concerns regarding stray voltage in your livestock confinement building(s), or are planning an addition, or constructing a new one, call Steele-Waseca at 507-451-7340 or 800-526-3514. Steele-Waseca will work with you and your electrician to eliminate potential stray voltage problems. You may also visit: www.minnesotastrayvoltageguide.com.

health & safety connection

Be lawful when planning for projects that require digging

Whether you plan to dig posts for a deck, plant a tree, or trench in electric lines for an outbuilding, it is important to understand, utilize, and comply with Gopher State One Call (GSOC) before starting your project.

The GSOC system is designed to notify utilities, in accordance with state law, who may have underground facilities in the area where digging is planned. That call needs to be made at least 48 hours (excluding weekends and holidays) before you plan to dig. **If a homeowner hires a contractor to do the work, then by law the contractor must obtain the ticket that allows digging to proceed.**



The type of information GSOC will need when you submit a ticket to locate whether by phone, or online at gopherstateonecall.org, includes your telephone number, your name (do not submit a ticket under someone else's name), mailing address, email address, alternate contact name and phone number, type of work, duration of work, if explosives are being used for excavation, tunneling and/or boring (also known as trenchless construction), right of way (note the ROW is not the same as an easement), area marked (white paint or flags), street address of work site including city/township name and county name, nearest intersecting street, and any additional marking instructions.

GSOC will not locate private facilities, which means the homeowner is responsible for hiring a qualified professional to locate their private underground facilities, which comes with a cost to the homeowner. Private underground facilities are those installed behind or after the meter. Also, if overhead distribution lines serve the

property and the power is distributed by underground service facilities, those facilities may be considered private. If a homeowner's electric meter is located on the property line, then the electric line from the meter to the house is considered privately owned and will not be located.

Steele-Waseca Cooperative Electric does not locate buried lines that are the homeowner's responsibility. The homeowner will need to hire and pay a private locator to determine the location of those buried lines.

A list of private locators are available at gopherstateonecall.org. Move your cursor over the "ABOUT US" tab on the home page, click on "Industry Directory," and "PRIVATE FACILITY LOCATORS."

This list is by no means an exhaustive list or a list of locators recommended by GSOC. For additional locators, consult a search engine like Google or the Yellow Pages under "Utilities Underground - Locating." **Remember, private locators will charge a fee for their services.** 1009669

Examples of other private facilities include: natural gas farm taps, natural gas or propane gas underground piping to buildings, private water systems, data communication lines, and invisible fences.

No one should ever remove flags before work is completed for the safety of all digging in the area. If you come in contact with an underground



Be Safe

Always call before you dig

CALL 811 BEFORE YOU DIG.

IT'S THE LAW.

UNDERGROUND POWER LINES can be just as dangerous as overhead power lines. Avoid serious injury and property damage by calling 811 before you dig to have underground facilities marked.

- Call Gopher State One Call at 811 at least two business days prior to a dig.
- Dial 811 or 1-800-252-1166 during normal business hours; this service is free for homeowners.
- Minnesota state law requires you to call.
- If you damage a line, you may be financially responsible for repairs.

You may also submit your dig information at gopherstateonecall.org/submit.

utility, evacuate the area and notify your utility provider.

Litomysl Summer Festival

Holy Trinity Catholic Church
9946 SE 24th Ave., Owatonna
Sunday, July 28

Polka Mass - 10 a.m.

Festival 11 a.m. - 4:30 p.m.

Food, games & prizes for all ages

Live Music with "Mary Nissel Band"

& "Dan Stursa Polka Band"

Prune, Poppyseed, & Apricot "Buchty"

Silent Auction & Used-a-Bit sale

Everyone welcome!

www.litomysl.webs.com



**Know what's below.
Call before you dig.**