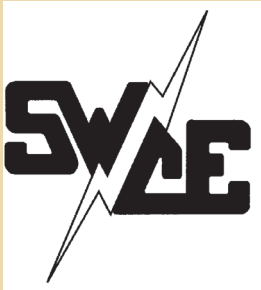


community connection

*Church of All Saints*  
New Richland, Mn  
**Fall Festival**  
Saturday, September 22, 2018  
JustFriends singers at 3:30P.M.  
Mass at 4:00 P.M.  
Turkey Sandwich Supper with augratins, beans, colzslaw, dessert from 5:00 to 6:30 P.M.  
Tickgts \$8, Children under 5 \$3  
Take out meals available -Saturday 507 465 8381  
Family Fun 3 to 7:30 P.M. under the Big Tent  
Silent Auction Bingo Raffle Country Store  
Cherished Treasures Table  
Outdoor Games  
Handicap Accessible

**St. John's U.C.C.**  
**Germanfest**  
19086 Jacobs Ave., Faribault, MN  
Morning Worship Service at 10:00 AM  
From Faribault: Exit I-35 to Hwy 60, go 8 mi. east to CR 24, follow CR 24 for 2 mi. north to church; From Northfield: Follow Hwy 246 11 mi. to CR 27, follow CR 27 for 2 mi., follow CR 24 south 1 mi. to church.  
Sunday, September 30, 2018  
German Buffet  
Serving: 11:00am-2pm and 4pm-6pm  
(No Reservations Needed)  
Live Old-Time Music  
Performed by:  
"Tim Chlan and friends" 11am-1 pm  
"Ray Sands Band" 1-3 pm  
And "The Stuttgart Three" 3-6 pm  
Special Features  
• Bake Shop  
• Christmas Store  
• Quilt Show  
• St. John's Apple Jelly  
• Authentic Costumes  
• "Rootbeer" Stand  
• Petting Zoo  
• BINGO  
• Farmer's Market  
• And More.....  
3:00 PM Polka Praise Service  
For more information call:  
Telephone: (507) 789-6635/or (507) 334-6550  
Tickets: Adult...\$15.00 Ages 5-12....\$5.00 4 and under....Free

**Steele County Ducks Unlimited**  
**46th Annual Fall Duck Bash**  
Thursday, September 27, 2018  
Foundation Building  
Steele County Fairgrounds  
North of the Softball Fields  
Owatonna, MN 55060  
Doors open at 5:00PM  
Dinner at 6:00PM  
\*NEW LOCATION\*  
FOUNDATION BUILDING at FAIRGROUNDS!  
2 FREE kegs of beer!  
Tickets include event attendance, dinner, pop, and a one-year Ducks Unlimited membership!  
Sponsor Tickets include entry into the sponsor drawing, 1 Duck Buck Pack, a framed sponsor print, and an invitation to the 2019 Sponsor Dinner.  
Wear Camo or Blaze Orange for a FREE gun raffle ticket!  
Purchase tickets online at [www.ducks.org/Minnesota/events](http://www.ducks.org/Minnesota/events)  
Ticket Pricing  
\$45 Single  
\$65 Couple  
\$20 Greenwing  
\$300 Sponsor  
\$320 Sponsor Couple  
\$200 Legacy Greenwing  
Ducks Unlimited is the world's largest non-profit organization dedicated to conserving North America's continually disappearing waterfowl habitats. Established in 1937, Ducks Unlimited has conserved more than 14 million acres thanks to contributions from over one million supporters across the continent. Guided by science and dedicated to program efficiency, DU works toward the vision of wetlands sufficient to fill the skies with waterfowl today, tomorrow, and forever.  
For more information on our work, visit [www.ducks.org](http://www.ducks.org). Connect with us on Facebook at [facebook.com/ducksunlimited](https://facebook.com/ducksunlimited), follow our tweets at [twitter.com/ducksunlimited](https://twitter.com/ducksunlimited) and watch DU videos at [youtube.com/ducksunlimitedinc](https://youtube.com/ducksunlimitedinc).  
Tickets are limited. If you have questions, call Bob Hoen at 507-456-5046.  
RESERVE YOUR TICKETS NOW!  
For more information or to buy tickets online, visit <http://MN.ducks.org>



the power of human connections

sparks

Your Touchstone Energy® Cooperative

a monthly newsletter from Steele-Waseca Cooperative Electric

September 2018

inside connections

- 2 Manager Connection
- 3 SWCE residential rebates  
Investing in efficiency  
Equity information reflected on this month's statement
- 4 Cookin' Connection  
SWCE community solar update  
Steele County Tip Line
- 5 Safety around pad-mounted transformers  
Dorm room electrical safety  
Fall Ham Supper at Trinity Luth. Church, Medford  
Festival of Trees, Owatonna
- 6 Ad Connection  
4-Seasons Vacations
- 7 Ad Connection  
SWCE POWRE workshop
- 8 Church of All Saints Fall Festival  
Ducks Unlimited Fall Duck Bash  
St. John's U.C.C. Germanfest

calendar of events

September

- 3 Labor Day 26180  
SWCE office closed
- 5-9 The Defeat of Jesse James Days in Northfield
- 8-9 Mantorville Marigold Days
- 9 Grandparents Day
- 11 Patriot Day
- 21 National POW/MIA Recognition Day
- 22 First day of autumn

If you wish to reduce clutter and add convenience, you may elect to receive an email that your bill is available to view online. Log in to your online account at [www.swce.coop](http://www.swce.coop), click on the "Alerts" tab, and check "Bill Notification," and "Electronic Only." Enter your email address and click "Update" to receive your bill notification by email instead of in the mail.



YOU'RE INVITED  
SWCE's  
Renewable Workshop

August 27th  
SWCE Board Room, Owatonna  
6:30 PM

Thinking about adding solar or wind  
to your home?

Come to our renewable workshop to learn:  
• SWCE's POWRE rebate program  
• Win one of three \$25 SWCE certificates



For additional workshop details, please see Page 7

Steele-Waseca utilizes CoBank program to benefit area groups

Steele-Waseca Cooperative Electric during July presented grants made available through a cooperative lender to benefit three area organizations.

The CoBank Sharing Success program annually provides funds designed to match the contributions of CoBank customers to the charitable groups they support throughout rural America. Eligible CoBank customers can submit an application for up to three matching grants. The minimum qualifying amount for each contribution is \$1,000, and the maximum of all three can't exceed \$5,000.

This year's area recipients include the Civil Air Patrol, Faribault Middle School, and the Search & Rescue Explorer Post 150.

CoBank launched their Sharing Success program in 2012, in conjunction with the International Year of Cooperatives. It is one more way the bank creates value for its customers, by part-

nering with them to strengthen the communities they serve.

Headquartered outside Denver, Colorado, CoBank is a national cooperative bank serving rural power, water, communications providers, and agribusinesses in all 50 states.



Steele-Waseca General Manager Syd Briggs (pictured right) presented Civil Air Patrol 1st Lieutenant Ryan Heydon, July 13, with a \$1,500 grant check from CoBank's Sharing Success program to benefit the local Air Patrol.



Gold Cross Ambulance's Rick Ellingson (pictured left in adjacent photo) accepted a \$1,500 CoBank Sharing Success grant check, July 16, from SWCE General Manager Syd Briggs benefiting Search & Rescue Explorer Post 150.



Steele-Waseca Cooperative Electric Controller Jon Stelter (pictured right) presented Faribault Middle School Counselor Brent Hawkins, July 11, with a \$1,500 check from CoBank's Sharing Success grant program to benefit the school.



Published monthly by  
Steele-Waseca Cooperative Electric  
2411 W Bridge Street, PO Box 485  
Owatonna MN 55060-0485

Website: [www.swce.coop](http://www.swce.coop)  
Email: [swce@swce.coop](mailto:swce@swce.coop)  
Fax: 507-446-4242



#### Board of Directors

PJ Duchene . . . . . District 1  
Geraldine Lienke . . . . . District 2  
Duane Edwardson, *Chaplain* . District 3  
Dennis Ringhofer . . . . . District 4  
Rodney Krell . . . . . District 5  
Gary Wilson . . . . . District 6  
*President, GRE Director*  
John Beal, *Vice President* . . . District 7  
Ronald Sommers . . . . . District 8  
*Assistant Secretary/Treasurer*  
Renee Malecha . . . . . District 9  
*Secretary/Treasurer*

#### Management

Syd Briggs . . . . . *General Manager*

#### Division Managers

Darla DeVries . . . . . *Office*  
David Lundberg . . . . . *Finance*  
Kim Huxford . . . . . *Operations*

#### Office Hours

8:00 a.m.–4:30 p.m., Monday–Friday

#### Operations Office Hours

8:00 a.m.–3:30 p.m., Monday–Friday

#### For Customer Service, Billing Questions and Power Outages

##### Phone:

507-451-7340 or 800-526-3514

#### Before calling to report an outage

1. Check fuses and circuit breakers in your home and on meter pole.
2. Check with your neighbors to see if they have power.
3. Look for possible causes such as a tree branch on wires, a broken pole, twisted wires, etc.

#### To leave a non-emergency message whenever SWCE's Office is closed:

Phone 507-451-7340 or 800-526-3514  
and listen to the prompts. Please have  
your account number, phone number, and  
name on the account available.

Call *Before* You Dig  
Gopher State One Call  
811 or 800-252-1166  
48-hour notice required for **ALL**  
underground cable locations

## manager connection



By Syd Briggs,  
General Manager

### Learning by Doing

If you are a parent with school-aged children, you may be having mixed feelings with the new school year about to begin.

Along with the hopes and dreams we have for our young future world leaders, and the joy of seeing them develop, there may be another benefit we experience when they leave the house for an extended period of time during the day. The electricity bill may decrease.

Electronic and mobile devices, TVs, computers and gaming stations have become the new standards in homes, particularly those with children. Have you noticed your electric bill has increased during the summer? Besides the hot, humid weather, with those electronics mentioned above, and your kids around the house more, it certainly can be a factor.

Consumer electronics coupled with the proliferation of smart home appliances, technology, and electric vehicles have slowly, but steadily, changed our homes and lifestyles.

This ever-connected world is the modern environment in which children are growing up. And with lifestyles increasingly reliant on technology—and in turn—energy consumption, teaching youngsters to save energy is an important life lesson.

### The Why

Before parents can teach their children *how* to save energy, they must first answer the question, “*What’s in it for me?*” As most parents can attest, convincing kids to care about energy efficiency is a hard sell. Parents can attempt to explain why it is important to save energy and how it can be a benefit to a household’s economy. However, being motivated to change habits that doesn’t have an immediate effect on their lifestyle can still be a difficult task. In simplest terms, less money spent on an electric bill needs to have an obvious “trickle down” impact to affect habits. In the world of reward vs. coercion, reward always wins out.

Less tangible, but just as important, using less energy means running your home more efficiently, conserving natural resources and helping the environment.

Because “saving energy” is an abstract concept for children, be specific about energy efficiency actions and set an example. We know that children learn by observing what their parents do. Even if they don’t say anything, children are processing your actions. When you turn off the lights when leaving a room or unplug the phone charger once the device is fully charged—they will notice. 32723

Learning about energy efficiency doesn’t have to be a boring lecture. Make it fun for greater impact.

For younger kids, turn energy efficiency into a “treasure hunt” game to locate all the things in your home that use electricity. Depending on the age of the children, challenge them to count and group the items into categories: electronics, appliances, lights, etc. If age appropriate, have them create a list. Ask which gadgets and appliances could be turned off or unplugged to save power every day.

For older children, show them how to program the smart thermostat and appliances. Shop with them for LED lights and discuss Energy Star®-rated appliances. Show them the electric bill so they can see the costs, energy use, and how their actions impact the bill.

Kids of all ages can learn a few simple energy-saving habits that can last a lifetime:

- Turn off lights, devices, computers and video consoles when not in use.
- Open blinds and curtains during winter days to let warm sunlight in and close them during summer days to keep your home cooler.
- If your children are old enough to run the dishwasher or wash their own clothes, teach them to run these appliances only with a full load and during off-peak energy hours.

### Rewards

Offer rewards for agreed upon milestones. Rewards provide positive reinforcement on energy-saving actions. The idea is to create a *habit* of being energy efficient. And for parents, this could mean less nagging about turning off the lights!

Teaching your children about saving energy is not only a creative way to spend time with them; it helps your home to be more energy efficient, and can instill good habits for your child.

## ad connection

(For Sale ads continued from Page 6)

**2018 SALEM FSX TRAVEL TRAILER**, new, queen bed, sleeps (4), dinette w/slide-out, 12” awning w/ lights, super nice, \$13,500. 334-0105.

**2003 FORD F-250 SUPER DUTY EXT. CAB**, 4x4, flatbed w/1200# liftgate, 7’6” Boss Super-Duty plow, new tires, lic. June 2019. 391-2485.

**FORTUNE CREEK TRL LOTS**, covenant allows for a pole shed, starting at \$75,000. 838-5033/John.

**VARIETY OF MEN’S & WOMEN’S OLD WEST/ FRONTIER CLOTHING** incl. hats, skirts, vests, frocks, shirts, trousers & accessories. 952-451-4821.

**BLK ANGUS BEEF**: Qtrs, halves or whole avail., semi-organically & locally raised. 330-2452/Matt.

**PRONTO PWR WHEELCHAIR**, exc. cond., best offer; **MF 2705 TRACTOR**. 475-2322.

**KATAHDIN HAIR SHEEP**, never shear sheep again, great mothers, excellent for organic, beginners, & grass-based production. 451-2722.

**12-PLACE SET OF CHINA**, \$50/obo; **DECK STEPS**, treated lumber, \$50/obo. 528-2763.

**MINI STORAGE AVAIL. IN FBO**: 6’x8’—\$49/mth, 10’x24’—\$125/mth; **MINI STORAGE AVAIL. IN MORRISTOWN**: 10’x20’—\$99/mth. 333-0319.

**LAMANCHA BUCK**, purebred, 1.5-yr-old; **LAYING HENS**, 1-yr-old. 645-7004.

**LARGE ASSORTMENT OF NUTS & BOLTS; STORAGE UNITS; WELDER; PARTS WASHER; TOOLS**; & many misc. items. 456-1104.

**IH 720 5-BTM PLOW**, new shines, lathes & coulters; **HUTCHINSON AUGER**, 8x60; **MAYRATH AUGER**, 8x55. 475-2118.

**WOODS 8-ROW STALK CHOPPER**, 3-pt, (4) wheels, gd cond. 456-1629.

**INDOOR RV STORAGE** w/14’ entry door. 412-1171.

Steele-Waseca Cooperative Electric (SWCE) assumes no liability for the content of, or reply to, any item posted. The party posting any advertisement assumes complete liability for the content of, and all replies to, any advertisement and for any claims against SWCE as a result thereof, and agrees to indemnify and hold SWCE harmless from all costs, expenses, liabilities and damages resulting from, or caused by, any advertisement or reply thereto.

(College electrical safety continued from Page 5)

tains, and other flammable material.

- Discard or repair damaged electronics. It may be tempting to use an electronic device with a frayed or damaged plug-in to save money. However, damaged electronics should not be used, since they can shock or electrocute students.

- If your lights flicker, electronics shut off, or circuits trip—notify campus staff.

- Use only laboratory certified appliances and electronics.

- Watch out for overheated outlets. If an electrical outlet becomes so hot you cannot leave your hand on it, there is potential for a fire. Unplug everything from the outlet and notify the landlord or dorm officials immediately.

College students should also know what to do if there is a fire, including escape and meeting plans. There are more than 3,500 fires on college campuses every year. Help prevent fires by understanding electrical safety and sharing what you know with loved ones.

(Courtesy: [SafeElectricity.org](http://SafeElectricity.org))

**VENT-FREE LP HEATER**, \$50; **WOOD**, approx. (2) cords, mostly cut, needs splitting, \$75. 451-6695.

**SEWING MACHINE, QUILTING FABRIC, PATTERNS, STENCILS, RULERS**, etc. 334-6362.

**1998 FORD F-250 LARIAT XLT**, ext. cab, 4WD, maroon, new tires & battery, bed liner, trailer brakes, 5.4L, auto., \$1500/obo. 330-1686.

**RING-NECKED DOVE PET & CAGE**; **RABBIT CAGE**, like new, blk metal, \$15. 451-0988.

**2002 MERCURY MOUNTAINEER**, AWD, V6, green, \$3700/obo; **2002 DODGE DURANGO**, 4x4, blk, \$2700/obo. 835-2814/Kevin/leave message.

**2017 JD 1025R TRACTOR** w/front loader & rear blade, no mower attached, used 6 hours. 952-492-6515/home or 612-419-4231/cell.

**CENTURY AC/DC 230-AMP WELDER** on wheels w/helmet, welding tools & rods, \$100. 456-7614.

**STEEL & PLASTIC BARRELS; HOUSE DOORS & WINDOWS; LUMBER**, all different sizes. 664-9426.

**SICK GRANDFATHER CLOCK?** Clock doc making house calls. 334-2010.

**30 X 21 HVY GRAIN BIN** w/drying floor, heater & fan. 465-8522 or 339-1700/cell.

**SHIPPING CONTAINERS**, store your stuff on your property, rodent & moisture proof, 20’ & 40’ containers. 612-418-4375.

**HOYT SUPERSTAR SUPREME BOW**, right hand, quiver, arrows & stand, \$200. 334-5532.

**VANGUARD PWR PRO GENERATOR**, 5000-watts, can run on propane or gasoline, \$750; **GENERATOR TRANSFER SWITCH**, \$100. 685-2515.

**2000 BUICK LeSABRE**, 97,500 mi., maroon, runs gd, best offer. 688-2234.

**1978 GMC PICKUP**, 3/4 ton w/454 motor, dual exhaust w/new starter & ring gear, little rust, \$3200. 451-5131.

**B&W 3500 COMPANION HITCH**, also a 5th wheel head leveling kit & 5th wheel gooseneck adapter, new, \$1200/obo. 952-652-2239.

**ANTIQUE MN AUTO LICENSE PLATES**, 1934-68, gd cond.; **CANNING JARS**, clean, all sizes, best offer. 463-8064.

**1958 OLIVER CLETRAC CRAWLER**, vry gd running cond., pictures avail., \$3500. 612-802-9251.

**2001 FORD ESCORT**, 153,000 mi., everything wrks, \$3500. 213-0097.

**1994 STARCRAFT POP-UP CAMPER**, sleeps (6), canvas in gd cond., newer AC unit, gas stove, mini cooler, \$1500/obo. 254-616-0639/cell.

**HVY DUTY TRAILER**, 8’x16’, (2) 7500-lb. axles, new tires, \$1700; **1996 SUBURBAN**, \$500. 456-9145.

**HVY GRADER BLADE**, \$500; **HOT TUB**, \$900; **DORM REFRIG.**, \$150; **GOLF CLUBS**, \$45. 339-0763.

**HOUSE CLEANING SERVICES**: dust, mop, sweep, vacuum, clean bathrooms, etc., also do some windows. 461-9422.

**2004 ALUM. MOTORCYCLE TRAILER**, \$1000. 676-4039.

**CRAFTSMAN WOOD LATHE**, 36” bed w/cutting tools & table. 461-1981.

**MERCURY 65-HP BOAT MOTOR**, currently on a ’70’s fiberglass tri-hull boat (you can have boat & trlr also, boat has a small leak), \$700/obo; **1500-GAL. PLAS. WATER STOR. TANK**, \$200/obo. 456-9499.



### YOU’RE INVITED SWCE’s Renewable Workshop

August 27th  
SWCE Board Room, Owatonna  
6:30 PM

Thinking about adding solar or wind  
to your home?

Come to our renewable workshop to learn:

- Details of solar systems with Jay Peterson, American Energy, LLC
- SWCE’s POWRE rebate program
- Win one of three \$25 SWCE certificates

**POWRE**

Power Optimized With Renewable Energy

- Seating limited to 20 members
- Enter SWCE through the front door at 6:30 PM

To sign up, contact Steve or Katie ([snordahl@swce.coop](mailto:snordahl@swce.coop) or [marketing@swce.coop](mailto:marketing@swce.coop)) at 507-451-7340



ad connection

give away

(4) FARM KITTENS, born 5/24/18. 334-9302.

**FREE PRINTED IMAGE** when booking photography session (family, newborn, senior, farm, & wedding photography). 581-6759.

**BARN CATS.** 451-3678.

**TENT,** 8-10 person. 583-7143.

**BARN KITTENS,** born June 1. 455-3506/call or txt.

**BLK HOLLAND LOP BUNNY** w/cage. 456-8787.

wanted

**HELP TO YOU IF YOU NEED IT.** 213-4060.

**UNWANTED BIKES & LAWN MOWERS,** \$ pd on delivered. 330-3178.

**WILL DO YARD/DRIVEWAY W/COMPACT TRACTOR,** have tiller, bucket, blade & plow. 451-6046.

**JUNK & UNWANTED APPLIANCES,** no TVs or computers, FREE drop-off. 210-6728/Dan/lv. msg.

**CRAFTERS** for 19th Ann. Christmas for Veterans Homemade Craft & Bake Sale, Nov. 3, 8:30 a.m.—3:30 p.m., Trinity Luth. Church in Owat., donations welcome anytime. 455-2755 or 271-3596.

**JUNKERS & REPAIRABLES:** trucks, cars, pickups, most constr. & farm equip., top \$ pd. 332-2300.

**BARN, GRANARY &/OR OUTBUILDINGS,** I remove to re-purpose the lumber; **CUPOLAS; OLD TIN; BARN SIDING &/OR LUMBER.** 330-0258/Tim.

**USED TONGUE & GROOVE HARDWOOD FLOORING,** 1"-1.5" wide. 317-9246.

**HAY,** approx. (15) bales. 363-3975.

**4-WHEELER,** 4x4, auto, after 2005, adult, running smoothly, 4-stroke. 952-847-3841/call or txt.

**PEOPLE INTERESTED IN SERVING ON OWAT. RURAL FIRE ASSOC. BOARD OF DIRECTORS,** election is in March 2019. 451-9614.

**CHEVY 456 MOTOR; CHEVY DANA 60 OR DODGE FRONT AXLE,** 4-wheel drive; **16.5 DODGE OR CHEVY 8-BOLT RIM** w/beadlock; **1973-87 CHEVY BLAZER BODY.** 451-7091.

Sparks Free Classified Ad Form for all SWCE Members

Ads need to be received in our office by September 5 to ensure being printed in the October Sparks. Please print neatly or type your ad of 20 words or less on this form. We reserve the right to edit ad copy to allow space for more ads. Ads received after the 5th will be printed in the November issue. 1034824

☐ For Sale

☐ Wanted

☐ Give Away

Phone # \_\_\_\_\_ Account # \_\_\_\_\_

Name \_\_\_\_\_

Clip and mail to: SWCE, PO Box 485, Owatonna MN 55060-0485, or fax to: (507) 446-4242 or email your ad to: sparks@swce.coop.

All area codes are 507 unless otherwise noted

for sale

**SCHWINN SIERRA MEN'S MTB,** 21-spd, 26x175, \$100; **SCHWINN RANGER MEN'S MTB,** 21-spd, 26x175, \$100. 330-3178.

**BREEDING, PYGMY, & BILLY GOATS.** 451-3678.

**HI-LO CAMPER,** older, great for a fishing or hunting trip, \$950; **27" TV,** works great w/new remote, \$50. 451-7578.

**MOHAIR (ANGORA GOAT) WOOL & ALPACA FIBER; YARNS, ROVING, BATS, WASHED FIBER & RAW FLEECES.** 832-392-1587/cell.

**RENTAL,** Izaak Walton League Bldg., 4 mi. south of Owat., seats 100, full kitchen, grill, Wi-Fi, \$100. 451-7946.

**SKID STEER BUCKETS; 2004 CHEVY 2500HD SERVICE TRUCK,** 4x4. 402-7679.

**LAWN MOWING SERVICE:** medium to large areas incl. farms, city or county; **GARDEN TILLING,** medium to large areas; **LAWN MOWER & CHAIN SAW BLADE SHARPENING.** 213-0829/Jerry (Mdfd).

**CLIMATE CONTROLLED UNITS FOR RENT,** 11'x9' to 16'x10'. 332-4623.

**10' BARGE BOX** on 5-ton running gear, wood hydraulic hoist, \$300. 390-4571.

**CRAFTSMAN YT 4500 HYDRO YARD TRACTOR,** 26-hp, mower deck, snowblower, chains & wheel wghts, \$1250; **MED. GREEN EGG GRILL** in a wooden table on wheels, \$825. 651-335-1879/Jimmy.

**BEACHFRONT VACATION CONDOS FOR RENT** in Fort Myers Beach, South Padre Island & Mexico, visit [www.sandysbeachfrontcondo.com](http://www.sandysbeachfrontcondo.com) for details & photos. 612-865-9604/Sandy.

**VINTAGE BEN PEARSON SUPER JET FIBER-GLASS RECURVE BOW,** 60", vry gd cond., draw wght—35#, no string incl., \$40; **'70 VINTAGE KID'S TRIKE,** adjust. handlebars & seat, \$30. 451-1131.

**QUALITY RABBITS** for shows & 4-H projects: Californian; Silver Fox, blk; Rex, lilac. 475-1353/Shawn.

**MINI STORAGE UNITS,** Blmg Prairie. 456-2957.

**COLD CARRY PRESSURE WASHER** w/handle, new, 2 gpm@1500 psi, 115V, single phase, GFCI on 15' cord, cold water, \$825. 583-2703.

**BOBCAT S200 78" SNOWBLOWER** w/6.2 hydraulic motor pkg, like new. 451-7626.

**ACORN CHAIR LIFT,** 2-yrs-old, works great, \$2500; **UTILITY TRAILER,** 12' long, single axle, gd shape, \$1200. 952-652-2661.

**SONY HT-CT780 TV SOUNDBAR** w/wireless subwoofer, \$199. 456-2060.

**TREE TRIMMING, REMOVL & STUMP GRINDING,** pro climber & aerial lift to U of M guidelines; **FRONT CHROME BUMPER** for an F-650, new. 456-1609.

**MINI STORAGE UNITS FOR RENT.** 456-1460.

**1000-GAL. FUEL BARREL,** best offer. 455-0895.

**15.5-TON CAPACITY DUMP TRUCK AVAIL.** for all your hauling needs: rock, gravel, dirt, etc. 456-7774.

**2011 TOYOTA PRIUS,** charcoal gray ext., gray int., tinted windows, 95,576 mi., new tires, vry reliable, gd looking car, \$9500. 491-4565.

**WHEEL HORSE 418A GARDEN TRACTOR,** 18-hp Kohler engine, incl. 42" mower deck, hydraulic equip. lift, \$900. 952-836-6782/Bill.

**'07 KEYSTONE SPRINGDALE 38' TRVL TRLR** w/(2) slide outs, sleeps 10, full-sz fridge, kitchn area has a dbl sink & large counter area, big bathroom area w/full-sz shower, gd cond., \$12,000. 451-9445.

**WASHER & DRYER,** wrks, \$150/obo; **TRIKE,** small, \$17.50/obo; **2-PLACE SNOWMOBILE TRAILER,** new tires 2-yrs-ago. 583-7143.

**USED ENGINES, TRANSMISSIONS, AUTO & TRUCK PARTS,** 30-day warranty. 332-2300.

**LORENZ 120 PORT. GRINDER MIXER.** 455-0900.

**2005 FORD F-150 SUPERCREW CAB XLT,** clean title, 4VWD, new tires, 164,000 mi. 456-1862.

**SHINGLING; LIGHT CONSTRUCTION; TREE REMOVAL.** 456-0296/free estimates.

**(2) AUGERS:** 7" x 60' w/motor; 8" x 16' w/motor. 451-2531.

(For Sale ads continued on Page 7)

travel

To learn more about upcoming tours visit

4-seasonsvacations.com

Have a question? Please call the toll-free number below, or email: 4seasons@smig.net

Call 4-Seasons at 800-328-4298 and reserve space today! Be sure to tell us you are Steele-Waseca members!



member connection



When you think about saving money, think energy efficiency. By making easy, smart choices in your home, you can contribute to lower energy bills and help the environment. Helping you become more energy efficient is one of our goals as your electric provider and you are invited to take advantage of any or all of these Energy Efficiency Rebates for your home!

Rebate questions? Please call Steele-Waseca at 507-451-7340 or toll-free 800-526-3514

RESIDENTIAL PROGRAMS OVERVIEW

Energy Efficient Lighting:

The home lighting programs are designed to help residential members replace standard household lighting with high efficient lighting technology such as Energy Star LEDs, and LED yard lights.

Energy Efficient Appliances:

When you are considering your next appliance purchase you are encouraged to purchase an ENERGY STAR rated unit. A rebate from your local electric cooperative is available for dehumidifiers, electric clothes dryers, as well as freezers and refrigerators (recycling of old unit is required). The rebate requires the existing unit be recycled to qualify for the rebate.

Home heating and cooling:

During the hot summer days, ensure your cooling system is operating efficiently by getting an AC tune up to maximize your energy savings. In addition, when you purchase a new air conditioning system, there are rebates available if you install a high efficiency air source heat pump or central air conditioner.

You may also want to consider installing a ground source heat pump. The Midwest experiences seasonal temperature extremes—from hot, humid heat in the summer to sub-zero cold in the winter—while a few feet below the earth's surface, the ground remains at a relatively constant temperature. The below ground temperatures can hover between 45 to 55 degrees. That's when ground source heat pumps can really make a difference. Your local electric cooperative provides a generous rebate for ground source heat pumps installed in new construction or retrofit applications.

Rebates are also available for ductless air source heat pumps and for installing an ECM motor for your furnace.

Water Heating

Water heating represents up to 25% of a typical home's energy usage. Rebates are available for residential members who improve their water heating efficiency by enrolling in off-peak programs or purchasing energy efficient equipment.

New home construction:

The New Home Construction program focuses on energy efficient home design and construction. Your electric cooperative will work with you and your home builder to not only provide the latest information and products on energy efficient technologies, but to outline best practices in energy efficient construction standards.

ENERGY EFFICIENCY STEP	YOUR REBATE
ENERGY STAR Home Lighting LED Home Lighting – Limit 5	\$2.00 per bulb (up to half the price of the package)
ENERGY STAR Appliances	
Dehumidifier	\$25
Electric clothes dryer	\$25
Freezer with recycling of old unit	\$50
Refrigerator with recycling of old unit	\$50
HVAC (Heating, Ventilation and Air Conditioning)	
AC Tune Up	\$25 per unit
Ductless Air Source Heat Pump	Delivered fuels – \$100 Primary electric heat – \$200
Electronically Commutated Motor (ECM)	\$50
Quality Installed Air Source Heat Pump – SEER 14.5 -16+	\$200-\$400
Quality Installed Central Air – SEER 14.5 -16+	\$50
Ground Source Heat Pumps	\$100 per ton (or per 12,000 BTUs)
Heat Pump Water Heater (HPWH)	\$500
ECM Hot Water Circulating Pump	\$50



The benefits of some home efficiency investments aren't seen as quickly as others. Here's how a few upgrades compare over time:

	Instant Benefit	1-5 Year Payback	Long Term Investment
<b>Set Water Heater to 120°</b> No Cost; Save \$73/yr			
<b>Open Window Blinds in Winter; Close in Summer</b> No Cost; Save \$35/yr			
<b>Adjust Thermostat 1° Down in Winter, 1° Up in Summer</b> No Cost; Save \$82/yr			
<b>ENERGY STAR Clothes Washer</b> Costs \$194 extra; Save \$140/yr			
<b>ENERGY STAR Refrigerator</b> Costs \$97 extra; Save \$100/yr			
<b>Wrap Hot Water Tank</b> Costs \$85; Save \$23/yr			
<b>Upgrade to ENERGY STAR Heat Pump</b> (From 10 to 15 SEER) Costs \$5,700; Save \$408/yr			

Find more ways to save at **TogetherWeSave.com.**

Source: U.S. Department of Energy Home Energy Saver, Touchstone Energy® Cooperatives. Based on national average savings; actual savings will vary by climate.

Your billing statement this month has a special line listing the amount of your electric sales less power costs in 2017. This is shown as **2017 PATRON-AGE BASIS**. Capital credit equity you've been allocated for 2017 is shown as **2017 ALLOCATION**, if electric sales exceeded power costs. Also listed is the **CAPITAL CREDIT BALANCE**, which is the amount of your remaining accumulated equity. Please save this month's billing statement if you will need any of those amounts for tax preparation. Only inactive accounts receive separate statements of equity.



## cookin' connection

### Honey Salad Dressing

Eunice Meixner

Owatonna

1/2 c. salad oil  
1 t. salt  
1/2 t. celery seed  
1/2 c. honey  
1/4 c. vinegar

Mix in blender for a few seconds. Makes about 2/3 c. salad dressing for coleslaw.

Please use a 3 x 5 card when submitting your recipe. The member whose recipe is published will receive a \$7 energy credit.



Steele-Waseca Cooperative Electric's solar subscribers will see a 56 kWh credit per panel on this month's statement for energy generated during July 2018. Learn more about community solar and The Sunna Project by visiting Steele-Waseca's website, [swce.coop](http://swce.coop).

## Was your account number in Sparks?

Each month five account numbers are printed in *Sparks* and a total of \$35 in energy credits is divided among however many of those numbers are found. For example, if all numbers are found, a credit of \$7 will be applied to the members' following month's electric bills; or, if only one number is found, that member receives the full \$35 credit. Members finding their numbers who have a load management receiver on their dual fuel, electric water heater, air conditioner, or genset will receive an additional \$7 credit. When you find your number, phone our office no later than the 7th of the month following receipt of the *Sparks*, or the amount will be forfeited.

## August issue of Sparks



### Numbers found:

Richard W. Cain

### Numbers not found:

Mr./Mrs. Joseph LaFrance

Carlos A. Galdamez

Richard C. Wagner

Aletha K./Robert G. Quam



## Sparks in brief . . .

• **Want easy energy payments?** Sign up for **EnergyPay Plus**, our automatic payment plan, or **Energy Prepay**, our discounted advance payment plan. Contact our office for details. You may also pay your bill online at [www.swce.coop](http://www.swce.coop). By entering your Steele-Waseca username and password you can also view a 13-month history of your account.

• **If you have changed or added phone numbers**, please contact SWCE to update your contact information. 108020

• **Need a new water heater?** For information about our Westinghouse Electric Water Heater Program, phone Cindy Butterfield at our office between 8 a.m.-3:30 p.m., 446-4204 / 800-526-3514.

• **July temps** – The average high temperature for July was 81° F, while the average low was 61° F. This resulted in 193 Cooling Degree Days (CDDs), and 7.5 Heating Degree Days (HDDs). They compare to last year's average high of 82° F and average low of 62° F. This resulted in 222.5 CDDs and 0 HDDs.

• **ENERGY STAR® Rebates** – In 2018, all ENERGY STAR refrigerators/freezers (with recycling), electric clothes dryers, dehumidifiers, central air conditioners, air and ground source heat pumps, light emitting diode (LED) bulbs purchased (limit 5) are eligible to receive rebates (may not be combined with special promotions). Rebate request forms must be submitted within 90 days of purchase. Rebate forms are available at [www.swce.coop](http://www.swce.coop). For more information or to receive a rebate request form, phone Cindy Butterfield at 446-4204 or 800-526-3514.

• **Steele-Waseca's tree service contractor** – Carr's Tree Service, Inc., is contracted to do SWCE's tree trimming. To report a tree concern, phone:

**507-451-7340 / 800-526-3514**

### STEELE COUNTY TIP LINE

**866-878-7964**

TO BE USED TO REPORT ANY CRIME OR SUSPICIOUS ACTIVITY ANONYMOUSLY

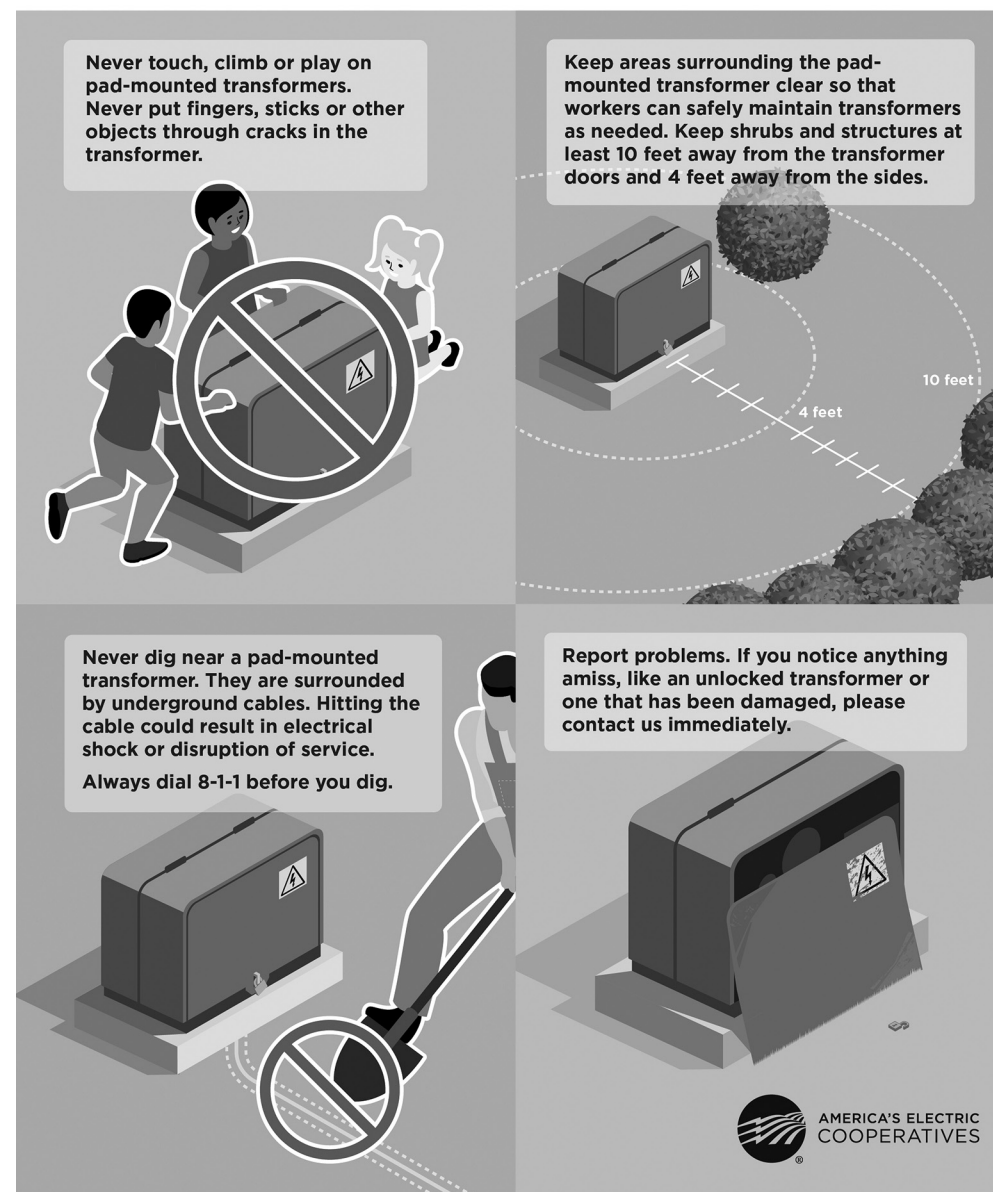
COVERS ALL OF STEELE COUNTY INCLUDING THE CITIES OF:

OWATONNA ELLENDALE  
BLOOMING PRAIRIE MEDFORD

## health & safety connection

### Avoid the Big Green Box

Please stay away from pad-mounted transformers (the big green box). While safe, they are not meant for touching, climbing or playing. Pad-mounted transformers carry high voltages of electricity that serve many homes in our communities.



## Campus/dorm room electrical safety

Today's college student uses many electronics for school, work, and play. When used improperly, these helpful gadgets can become electric hazards.

If you or a loved one is heading off to college, Safe Electricity® has the following tips to prevent electric accidents and fires:

• Extension cords are only for temporary use. Dorm rooms may not have enough outlets to plug in all your gadgets at once. If you must use extension cords, use them temporarily and unplug them when not in use.

• Consider purchasing power strips with an over-current protector, which will shut off power automatically if there is too much current being drawn.

• Use lightbulbs with the correct wattage for lamps; if no indication is on the fixture, do not use a bulb with more than 60 watts.

• Never tack or nail an electrical cord to any surface or run cords across traffic paths, under rugs or furniture. 1054562

• Keep all electrical appliances and cords safely away from bedding, cur-

(College electrical safety continued on Page 7)



### FALL HAM SUPPER TRINITY LUTHERAN CHURCH MEDFORD, MN 108 SW 3rd St.

Sunday, September 30, 2018

**MENU: "Family Style"**  
Ham (raisin sauce available)  
Homemade mashed potatoes/gravy  
Whole kernel corn  
Coleslaw  
Rolls & Pickles  
Assorted Pies  
Coffee/Milk

Serving Time: 4:30 - 7:00 PM

Our church is physically impaired accessible



**PRICES:**  
Adults . . . . . \$12.00  
Children (6-12) . . . \$5.00  
Pre-school . . . . . FREE

### FESTIVAL OF TREES

Friday, November 16<sup>th</sup>

Celebrates Holiday for Elder and Youth

Anticipation for Developmental Disability Month

Steele County

invites you to support our programs by participating in our 20<sup>th</sup> Annual Festival of Trees.

As a Tree or Corporate Sponsor you will receive tickets to the Opening Night Event on Friday, November 16<sup>th</sup>

Call 271-8268 or email [info@steelecounty.org](mailto:info@steelecounty.org) for more information.

The Festival is truly a celebration of giving!