


member connection

Keep Food Safe


Before, During and After a Power Outage

Unfortunately, power outages do occur from time to time. It's important to know how to keep your food safe during an outage. Use these tips from USDA to help minimize food loss and reduce your risk of illness.

Before
power outage



Keep refrigerator at **40° or below**. Freeze items like fresh meat and poultry that you won't use immediately. Keep freezer set to **0° or below**. Group frozen foods to help items stay colder longer.




If you anticipate an extended power outage, buy dry or block ice to keep the fridge and/or freezer cold.


During
power outage

Keep the refrigerator and freezer doors closed!

If the doors stay closed during the length of the outage:




A full freezer will hold its temperature for **48 hours**.




A refrigerator will keep food safe for **four hours**.

After
power outage

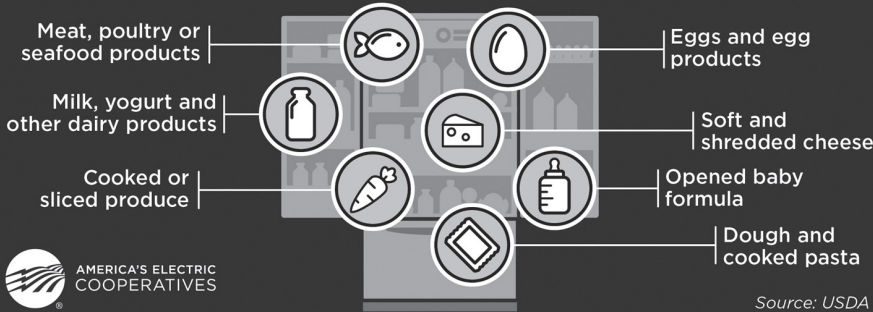


Check the temperature inside your refrigerator and/or freezer.



If the temperatures are safe, the food should be safe to eat.

Foods that should be thrown out after an extended power outage:



Source: USDA

Steele County Food Shelf thanks co-op for donation

(Editor's note: The following thank you letter was received as a result of the Steele-Waseca Cooperative Electric members who donated money and/or food items, June 5, during this year's annual meeting.)

Thank you! The Steele County Food Shelf cannot say 'thank you' enough for your generous contribution. The mission of SCFS is to provide food to the hungry, promote self-sufficiency, and to coordinate with other poverty and hunger related services. Every day the Steele County Food Shelf works to achieve its mission but it is only possible because of thoughtful contributions from people like you.

With your gift, along with contributions from people like you, we are able to provide 10-day meal packages to Steele County families living at or below 200% of the Federal poverty guidelines. Even with the ever increasing food costs, 7,988 households received a total of 449,284 pounds of food in 2017. We know SCFS will be able to continue this level of support to families needing assistance through 2018 and beyond due to generous donations like yours.

On behalf of all of us at the Steele County Food Shelf, I want to thank you very much for your recent contribution of \$147.00 and 218 pounds of food. We are so very grateful for your continued generosity.

Sincerely,
Nancy Ness
Executive Director

During the board of directors' reorganization meeting following the annual meeting, Robert Bruckbauer (Lake Country Power, Grand Rapids) was re-elected board chair; Dale Anderson (Kandiyohi Power Cooperative, Spicer) was elected board vice chair; Audrey Hjelle (Runestone Electric Association, Alexandria) was elected secretary, and Lee York (Nobles Cooperative Electric, Worthington) was re-elected treasurer. In addition, Steele-Waseca Cooperative Electric Board President Gary W. Wilson of Owatonna was elected director to GRE's 24-member board.



Gary Wilson



the power of human connections

sparks

Your Touchstone Energy® Cooperative

a monthly newsletter from Steele-Waseca Cooperative Electric

August 2018

inside connections

- 2 Manager Connection
- 3 Pieper, McCarthy reflect on 2018 Youth Tour experience
- 4 Cookin' Connection
SWCE community solar update
Steele County Tip Line
- 5 Electric shock drowning prevention
Poles are not bulletin boards
Jazz Jam coming to Owatonna
- 6 Ad Connection
4-Seasons Vacations
- 7 Ad Connection
GRE annual meeting
- 8 Steele Co. Food Shelf thank you
Keeping food safe during outage

calendar of events

August

- 3 Rice County Relay for Life
- 3-4 Dennison Days
- 3-5 Claremont Hogfest
- 5 Last day of Freeborn County Fair
- 11 Lonsdale Community Days
- 14-19 Steele County Free Fair
- 23 Minnesota State Fair starts
- 25 5th Annual Caleb Erickson Memorial Event in Waseca

Litomysl Summer Festival

Holy Trinity Catholic Church
9946 SE 24th Ave., Owatonna

Sunday, July 29, 2018
10 a.m. Polka Mass
Festival 11 a.m. - 4:30 p.m.

Food, games & prizes for all ages
Live Music with "Czech Lites" & "Dan Stursa Polka Band"
Prune, Poppyseed & Apricot "Buchty"
Silent Auction & Used-a-Bit Sale
Something for the entire family
Everyone welcome!
www.litomysl.webs.com

Coal Creek Tour provides informative, entertaining experience

Steele-Waseca Cooperative Electric's Jack Schwab, and his wife, Barb, hosted the 39th annual tour to Coal Creek Station and Falkirk Mine, June 12-14, near Underwood, North Dakota.

Three days of travel, fun, and educational adventure started Tuesday morning, June 12, with departure from Steele-Waseca's headquarters

in Owatonna with Northfield Lines and Motor Coach Driver Mark Estrem.

On the bus ride to Bismarck, North Dakota, a preview of what would be seen at Coal Creek Station, and Falkirk Mine was talked about, which created various educational activities and contests during the drive to reach the Country Inn & Suites hotel in Bismarck.

Upon arrival, the hotel hosted a welcoming room with snacks and refreshments. Everyone had some time to relax, go out to dinner at one of the many nearby restaurants, enjoy the mini-water park at the hotel, then all get together



Coal Creek Tour participants had the opportunity to get an up-close look at one of the trucks utilized at Falkirk Mine.

for fun group activities.

On Wednesday, June 13, the day started with breakfast prepared by hotel staff. The first stop on the tour was at Coal Creek Station near Underwood.

Station employees served as tour guides and delivered an informational and enlightening experience regarding the operation of the plant. Tour participants were escorted through Coal Creek Station in small groups, and learned how the coal comes in from Falkirk Mine and utilized for electrical generation. Each group learned how fly ash from burned coal is collected and sold as a cement replacement or utilized for environmentally-sound products.

The Coal Creek Station tour gave participants a view from the 21st floor where the Blue Flint Ethanol plant could be seen. The plant utilizes waste steam from the Coal Creek plant as part of their yearly production of over 70 million gallons of ethanol. With using the waste steam, Blue Flint Ethanol is one of the most cost-effective, energy efficient, and environmentally friendly biorefineries in the nation. 18693

The next stop was at nearby Falkirk Mine. Tour participants were able to see the gigantic equipment used to help supply about 8 million tons of lignite coal each year to Coal Creek Station.

(Coal Creek Tour continued on Page 7)



Youth attending the Coal Creek Tour enjoyed collecting their own coal on the floor of Falkirk Mine.

ship expects more renewables," Saggau said. "We are proud to announce that Great River Energy has set a corporate goal to achieve 50 percent renewable energy by 2030."

According to Saggau, the 2020 completion of the 300-megawatt Emmons-Logan Wind Farm will bring the cooperative to 30 percent renewables. Cost effective additions in the future are expected to keep the cooperative on track for 50 percent renewables by 2030.

Saggau also announced that GRE's average wholesale electric rate is projected to remain flat in 2019.

Vice President and Chief Power Supply Officer Jon Brekke described how GRE's generation portfolio has evolved over time.

"We used to receive power from five coal-based resources. Now, we have two—and they are both fueled by Dry-Fine™ lignite coal, which has lower emissions due to a patented refining process," Brekke said. Brekke voiced confidence in GRE's plans to add renewables while relying on a diverse and flexible portfolio that also includes natural gas plants and hydropower.

Vice President and Chief Financial Officer Michelle Strobel said GRE will begin to return patronage capital to its membership after the cooperative reaches 20 percent equity, perhaps as soon as 2019. Strobel also revealed a wholesale rate projection showing that GRE's rates are expected to increase a modest 0.88 percent per year over the next decade. 27007

Published monthly by
Steele-Waseca Cooperative Electric
2411 W Bridge Street, PO Box 485
Owatonna MN 55060-0485

Website: www.swce.coop
Email: swce@swce.coop
Fax: 507-446-4242



Board of Directors

PJ Duchene District 1
Geraldine Lienke District 2
Duane Edwardson, *Chaplain* . District 3
Dennis Ringhofer District 4
Rodney Krell District 5
Gary Wilson District 6
President, GRE Director
John Beal, *Vice President* . . . District 7
Ronald Sommers District 8
Assistant Secretary/Treasurer
Renee Malecha District 9
Secretary/Treasurer

Management

Syd Briggs *General Manager*

Division Managers

Darla DeVries *Office*
David Lundberg *Finance*
Kim Huxford *Operations*

Office Hours

8:00 a.m.–4:30 p.m., Monday–Friday

Operations Office Hours

8:00 a.m.–3:30 p.m., Monday–Friday

For Customer Service, Billing
Questions and Power Outages
Phone:

507-451-7340 or 800-526-3514

Before calling to report an outage

1. Check fuses and circuit breakers in your home and on meter pole.
2. Check with your neighbors to see if they have power. 32929
3. Look for possible causes such as a tree branch on wires, a broken pole, twisted wires, etc.

To leave a non-emergency message
whenever SWCE's Office is closed:

Phone 507-451-7340 or 800-526-3514
Press "2" and leave message including
name, account #, and phone # you can be
reached at the following business day.

Call *Before* You Dig
Gopher State One Call
811 or 800-252-1166

48-hour notice required for ALL
underground cable locations

manager connection



By Syd Briggs,
General Manager

Resiliency of the grid is one of the most popular concepts being talked about in the electric industry today.

This concept made headlines in the wake of Hurricanes Irma and Maria, which caused extraordinary damage to Puerto Rico's electric grid resulting in the longest sustained outage in U.S. history. Lack of resilience became the go-to phrase to describe Puerto Rico's grid. Here in Minnesota, what does grid resiliency mean for you?

Resiliency is many things—it's reliability in your electric service, it's our ability to efficiently restore your power, it's being able to meet the demands of new technology, and it's how we serve you with various generation sources without skipping a beat. Ultimately, resilience is how we deliver on our promise to improve the quality of life for our member-owners.

When it comes to having a resilient electric grid, it begins with a system that

is designed and built to withstand high winds, powerful storms, cybersecurity threats and other disruptions that could result in outages.

A resilient grid is also flexible and adaptable by allowing different types of generation—such as wind, solar, coal, and other generation resources—to seamlessly work together to provide you with safe and reliable power. The way our systems react to advancements in technology all factor into the resilience of our grid.

Resiliency is a 24/7, 365-days-a-year task. Whether it's the power lines, substations, or generation facilities on our grid, it takes proactive maintenance and investment to keep them running smoothly. With thousands of consumers without power for months, the lack of resiliency in Puerto Rico's power grid wasn't solely caused by hurricane damage; it was the result of years of neglect in taking care of their system and preparing for a worst-case scenario.

In a similar way to how we maintain our vehicles with regular oil changes, inspections, and tire rotations, a grid must also be properly maintained. Throughout the year, Steele-Waseca Cooperative Electric regularly conducts pole and line inspections. Our goal is to find a problem before it becomes one. For example, if we find a weak pole that has damage from natural

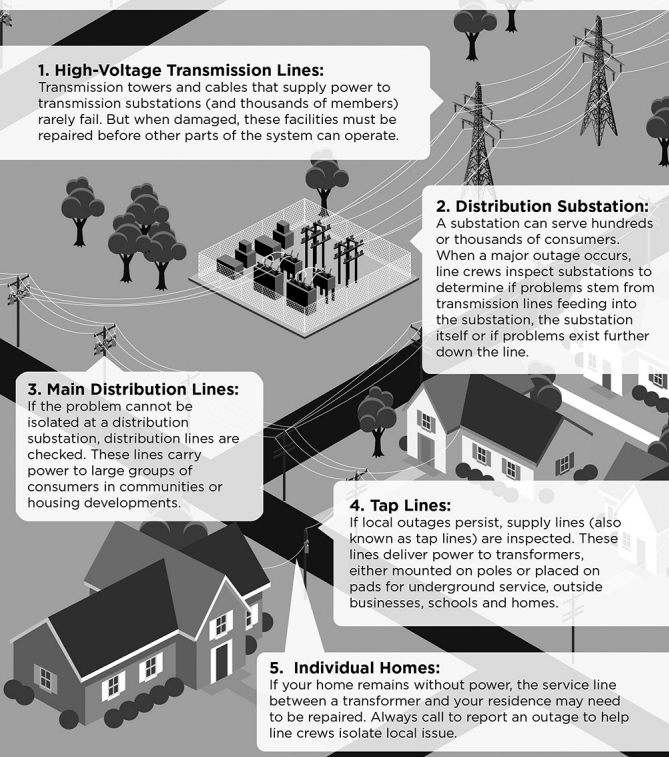
causes, we replace that pole. Doing so ensures that pole is as strong—or resilient—as it can be.

Living in Minnesota, we know that significant power outages can occur, from a severe thunderstorm during the spring or summer, to a blizzard or ice storm during the fall or winter. Steele-Waseca has confidence in the resiliency of our system to recover from the situation with as little disruption as possible.

In the dictionary, resiliency is defined as "the ability to bounce back, recover quickly and go back into shape or position after being stretched." When it comes to providing our member-owners with resilient service, this is what we work toward day in and day out.

Powering Up After an Outage

When the power goes out, we expect it to be restored within a few hours. But when a major storm or natural disaster causes widespread damage, extended outages may result. Our line crews work long, hard hours to restore service safely to the greatest number of consumers in the shortest time possible. Here's what's going on if you find yourself in the dark:



sparks • august 2018

ad connection

(For Sale ads continued from Page 6)

GE MICROWAVE, only 4-yrs-old, well taken care of, 24x18x13.5, \$50. 456-7757.

1979 SHOW LIVESTOCK TRAILERS. 455-0900.

15.5-TON CAPACITY DUMP TRUCK AVAIL. for all your hauling needs: rock, gravel, dirt, etc. 456-7774.

DUNCAN PHYFE TBL, blonde w/4-lvs & 6-chairs; **FARMERS TBL**, new w/4-chairs; **METAL DOOR**, new; **CORNER TV CREDENZA**, new; **KEROSENE HEATR**, new; **ADJUST. ALUM. WALKR**. 332-0294.

LAMANCHA BUCK, 1.5-yrs-old; **(2) LAMANCHA/SAANEN BUCKS**, 4-mths-old. 645-7004.

HAY, small squares, \$3.50 per bale. 838-6612.

INDOOR RV STORAGE, 15'h entry door. 412-1171.

CABIN, French Lk, \$57,000; **QUILTING FABRIC & STENCILS**; **SEWING MACH. CABINET**. 334-6362.

1985 14' LUND BOAT, trailer & trolling motor, \$750. 612-868-0254.

CAMPER, 5th whl, 21.5', great cond., sleeps (5), all accessories incl., truck bed & pwr pack. 332-7294.

1000-GAL. LP GAS TANK. 696-5764.

HEWITT CANTILEVER BOAT LIFT, 2400-lb., currently set up for pontoon, but could be converted easily, gd cond., \$1200/obo. 383-3014.

JERSEY/FRESIAN CROSS DAIRY COW, 3-yrs-old, due 10/5/18 to Jersey sire 1JE00944 Tad, \$1100. 841-3389.

BOAT & PONTOON STORAGE, inside, reas. price. 612-423-4500 (Big Steer/Millersburg area).

Steele-Waseca Cooperative Electric (SWCE) assumes no liability for the content of, or reply to, any item posted. The party posting any advertisement assumes complete liability for the content of, and all replies to, any advertisement and for any claims against SWCE as a result thereof, and agrees to indemnify and hold SWCE harmless from all costs, expenses, liabilities and damages resulting from, or caused by, any advertisement or reply thereto.

(Coal Creek Tour continued from Page 1)

Following lunch at Falkirk Mine, the final tour of the day was at Garrison Dam, the fifth largest earthen dam in the world, where electricity is generated with water. Lake Sakakawea, the reservoir created by the dam, is the third largest reservoir in the United States.

To end the day, participants had the opportunity to enjoy swimming, dinner, a competitive game of "Energy Jeopardy," to win great prizes, and an ice cream social.

On Thursday morning, June 14, everyone was on the motor coach by 7:30 for the return trip to Owatonna.

This tour serves as a mini-vacation for many participants. Steele-Waseca encourages you to bring students and/or grandchildren ages 10-18 (up to three students at NO CHARGE) on this entertaining, educational, three-day adventure. 1028166

For information on next year's Coal Creek Tour, June 11-13, 2019, contact Tour Host Jack Schwab at Steele-Waseca or email him at jschwab@swce.coop.

SMALL FREEZER, \$75. 676-0138.

ALUM. PONTOON LIFT, \$850; **SMALLER BOAT OR JET SKI LIFT**, \$375; **PADDLEBOAT**, seats (4) people, \$250. 491-4565.

LOG SPLITTER, \$395; **CHIPPER & LEAF CHOPPER**, \$195; **(6) LAKE LOTS**. 612-419-4231/cell or 952-492-6515.

525-GAL. POLY WATER TANK w/faucet & 10' hose, \$300. 664-9446.

AIRGUN DESIGNS MINIMAG PAINTBALL MARKER & ACCESSORIES, exc. cond., \$425. 456-2060.

30" DUAL FUEL STOVE: (5) gas burners, elec. convection oven, white, \$125. 334-9823.

SHIPPING CONTAINERS, store your stuff on your property, 20' & 40' lengths, moisture & rodent proof. 612-418-4375.

24" CEDAR SHAKES, used, gd cond., \$5 per bundle. 451-9533.

HOUSE CLEANING SERVICES: dust, mop, sweep, vacuum, clean bathroom, etc., I also do some windows. 461-9422.

CABIN on French Lk, 1/3 acre lot, turnkey, fully furnished, everything is incl. 451-5097.

(21) QUART JARS, **(4) SMALL JARS**, **(32) LIDS & (9) BANDS** w/lids, \$15. 339-0751 (Fbo).

2003 H-D SPORTSTER 883, 8039 mi. 456-1630.

HOLLAND LOP RABBIT w/2-place cage & rabbit carrier, \$75; **12-PANEL ROUND PEN**, new, \$600; **HORSE BOX STALLS**, new, nvr installd; **ARABIAN MARE**, bay, 12-y-o, well trained, \$1500. 456-8787.

Great River Energy's annual meeting outlines plans for increasingly clean energy at stable rates

Great River Energy Board Chair Bob Bruckbauer opened the cooperative's June 6 annual meeting asserting the role of the democratically elected board of directors in keeping Great River Energy (GRE) on the proper path for its member-owner co-ops.

"Our wholesale rates remain competitive and stable. Our 10-year rate forecast projects modest increases, below the projected rate of inflation overall," Bruckbauer said. "And we expect to achieve our goal of having 20 percent equity before the year 2020."

President and Chief Executive Officer David Saggau detailed how Great River Energy improved service to members while fortifying its finances and stabilizing rates. GRE achieved Minnesota's renewable energy standard of 25 percent renewables in 2017, eight years ahead of the state requirements. At the same time, GRE recorded near record margins and returned \$6 million to its

USED ENGINES, TRANSMISSIONS, AUTO & TRUCK PARTS, 30-day warranty. 332-2300.

HONDA MINI TILLER, \$125; **SKID LOADER TRAILER**. 339-5102.

CUB CADET 3225, 54" mower deck, 48" snowblower, chains & weights, \$2000/obo. 456-4254.

DOGTRA 280NCP PLATINUM DOG TRAINING COLLAR, 1/2 mile range. 451-5121.

2000 QH MARE, registered "Rockets Honor Call," Honor, broke, not for beginners. 390-0405/Emily.

19" BLOODLESS BURDIZZO EMASCULATOR, made in Italy, large enough for buffalo & camels, \$80. 952-652-2933 (Webster).

YARD SHARK CHIPPER-SHREDDER, 8-hp, B&S engine, \$400. 466-0210/call or txt.

55-GAL. WATER BARREL w/rain gutter filter kit, never used, \$50; **17' ALUM. GRUMMAN CANOE**, \$400. 685-2515.

1983 YAMAHA VIRAGO MOTORCYCLE, nice; **FUEL TANKS ON STAND**; **CHRYSLER OUTBOARD**, 120-hp. 213-7909.

(3) RIDING LAWN MOWERS, Murray, MTD, & Dyna-mark, all 1-owner w/manuals, \$250 for all (3). 456-7614.

HAY, put up dry, sm. sq., \$2.50, email: eakerdr@gmail.com. 583-2134.

JD 800 12' SWATHER, \$2500; **JD 50' ELEVATOR**, shedded, \$1200. 380-9580.

FAINTING GOATS: 2-billies & 2-nannies. 330-2889.



GRE President and Chief Executive Officer David Saggau announced, June 6, the cooperative will pursue a goal of 50 percent renewable energy by 2030. (Photo courtesy of GRE)

membership.
"Wind energy is our lowest-cost new generation resource, and our member-
(GRE plans continued on Page 8)

ad connection

give away

SONY WEGA 36" TV w/surround sound system, works great, vry hvy picture tube-type TV, you pick up & haul. 412-1248.

RAMBLR-STYLE HOME, 2-br, to move. 239-2321.

LRG DESK; SET OF ENCYCLOPEDIAS.676-0138.

BARN KITTENS, born June 1. 455-3505/call or txt.

(2) PALLETS. 685-2515.

FREE ONLINE CLASSIFIEDS, you place & remove your own ad on SWCE's website, swce.coop, these are separate from Sparks & will not appear in Sparks unless mailed, delivered, faxd or emailed to SWCE.

wanted

FELINE MOUSERS/RATTERS, must be gd at their job, you catch them—we'll feed them. 744-5353.

USED/WASTE OIL, 200-gal. min. 420-7429.

PAINTING JOBS: houses, outbuildings, garages. 320-8225.

JD 5 TRACTOR MOWER. 279-2407.

DOMESTICATED MALLARD DUCKS; SNOWY DUCKS; CALL DUCKS, white. 421-8735.

JUNK & UNWANTED APPLIANCES, no TVs or computers, FREE drop-off. 210-6728/Dan/lv. msg.

SHERIDAN .20-CAL. PELLET RIFLE, blue or silver streak model; BOAT TRAILER RIM, 5-bolt, 12x4.80. 465-8566.

CRAFTERS for 19th Ann. Christmas for Veterans Homemade Craft & Bake Sale, Nov. 3, 8:30 a.m.—3:30 p.m., Trinity Luth. Church in Owat., donations welcome anytime. 455-2755 or 271-3596.

JUNKERS OR REPAIRABLES: trucks, cars, pick-ups, most constr. & farm equip., top \$ pd. 332-2300.

BOAT TRAILER for 14' fiberglass rowboat, like to keep price around \$50 & within 30 mi. from Owat. 446-8866.

2005-13 TOWN & COUNTRY VAN; 5-CD PLAYER & CASSETTE PLAYER. 869-3191.

CANOPY & COVER for pontoon lift. 456-1630.

YOUNG FEMALE DOG to be companion to our old-er farm dog, medium to large breed. 456-8973.

Sparks Free Classified Ad Form for all SWCE Members

Ads need to be received in our office by August 6 to ensure being printed in the September Sparks. Please print neatly or type your ad of 20 words or less on this form. We reserve the right to edit ad copy to allow space for more ads. Ads received after the 6th will be printed in the October issue.

☐ For Sale ☐ Wanted ☐ Give Away

Phone # _____ Account # _____

Name _____

Clip and mail to: SWCE, PO Box 485, Owatonna MN 55060-0485, or fax to: (507) 446-4242 or email your ad to: sparks@swce.coop.

All area codes are 507 unless otherwise noted

for sale

IH CYCLO 400 PLANTER, 6-row; CRYSTEEL STEEL BOX HOIST, 24' - 102 wide, \$7200/obo; 24' DEUTZ DIGGER w/mulcher, \$2500/obo; '97 FORD PICKUP, 3/4 ton w/V-plow (new), \$9500. 456-1181.

(2) AUGERS: 6"x40', \$895/obo; 6"x25', \$595/obo (both w/intake hopper, motor mount & pulley in vry gd con. & previously used as roof augers). 317-2910.

WHEEL HORSE 418A GARDEN TRACTOR, 18 hp Kohler engine, incl. 42" mower deck, hydraulic equip. lift, \$900. 952-836-6782/Bill.

GRAIN BIN, 30x21 w/drying floor, fan & heater. 465-8522 or 339-1700.

'07 KEYSTONE SPRINGDALE 38' TRVL TRLR w/(2) slide outs, sleeps 10, full-sz fridge, kitchn area has a dbl sink & large counter area, big bathroom area w/full-sz shower, gd cond., \$12,000. 451-9445.

1939 AC C TRACTOR, wide front, new rear tires, tubes & rims, has a 5' belly mower, starts & runs gd, new carb kit gas tank was taken off and cleaned, \$1750/obo. 334-2527.

(2) DEHUMIDIFIERS, like new, \$50/ea. 459-3140.

SHINGLING; LIGHT CONSTRUCTION; TREE REMOVAL. 456-0296/free estimates.

MF 2705 TRACTOR; PRONTO PWR WHEEL-CHAIR, exc. cond., best offer. 475-2322.

FORTUNE CREEK TRL LOTS, covenant allows for a pole shed, starting at \$75,000. 838-5033/John.

'02 FORD ESCAPE, 240K mi., runs gd, new tires & batt., newer alternator, 4WD, \$800/obo. 744-5353.

RENTAL, Izaak Walton League Bldg., 4 mi. south of Owat., seats 100, full kitchen, grill, Wi-Fi, \$100. 451-7946.

MUSCOVY DUCKLINGS. 390-0206.

FIREWOOD, oak & elm, full load (standard 6x6 truck bed)\$125, half load/\$75. 402-7562 or email: cartscutz@gmail.com.

'05 FORD F-150 LARIAT, 99,600 mi., \$11,000/obo. 456-8683.

CLIMATE CONTROLLED UNITS FOR RENT, 11'x9' to 16'x10'. 332-4623.

COLD CARRY ALL w/handle, new, 2 gpm@1500 psi, 115V, single phase, GFCI on 15' cord, cold water, \$825. 583-2703.

1985 LUND TYEE 5.3 BOAT, 75-hp Merc & 2000 Merc. elec., downriggers, air ride seats, locaters, EZ Loader trailer, mint cond. 339-1937.

MICROFIBER COUCH, brown, gd cond. w/pillows, \$300; OVERSIZED LEATHER LOOK RECLINER, brown, \$200. 334-0105.

BEACHFRONT VACATION CONDOS FOR RENT in Fort Myers Beach, South Padre Island & Mexico, visit www.sandysbeachfrontcondo.com for details & photos. 612-865-9604/Sandy.

ANTIQUE LOG BED w/like new custom-made mattress & box spring, 3/4 size, uses full sheets, perfect for cabin, \$550. 612-719-1678 (Lonsdale).

LIGHTED BEER SIGNS (many); RECORD ALBUMS; WOOD SHELVEING; SQ., ROUND & REC. TABLETOPS. 612-827-6575.

OLD TOWN DISCOVERY CANOE, 14', red, exc. cond., \$500/obo. 903-413-9002 (Fbo area).

MINI STORAGE UNITS, Blmg Prairie. 456-2957.

2008 34' DAMON DAYBREAK CLASS-A MOTORHOME, beautiful, V10, 61,000 mi., slideout, self-contained, newer tires & batteries. 390-5244.

TREE TRIMMING, REMOVL & STUMP GRINDING, pro climber & aerial lift to U of M guidelines; FRONT CHROME BUMPER for an F-650, new. 456-1609.

1977 JD 4430 TRACTOR, vry gd cond. & field ready, new batteries & cab interior, pwr shift, \$14,000/obo. 456-1538.

MAGNAVOX STEREO, vintage 1970s, hexagon cab—radio, rec. pl., 8-track tapes, comes w/rec. & tapes, used in Feb., \$100/obo. 838-8565.

(For Sale ads continued on Page 7)

travel

ALASKA TOUR & CRUISE (2018 PASSPORT REQUIRED), Aug. 3-15. Round trip air, Riverboat Discovery, Gold Dredge #8, Denali, Alaska RR, 7-night cruise on Coral Princess. \$4,499 pp dbl occ.

ALASKA CRUISE ONLY ('18 PASSPORT REQ.), Aug. 8-15. Rnd trip air, 7-nt cruise on Coral Princess, Skagway, Juneau, Ketchikan, Hubbard Glacier & Glacier Bay Cruising. \$2,979 pp dbl occ.

GIRLFRIEND GETAWAY IN DOOR COUNTY, Aug. 18-21. Deluxe motor coach, 3-night resort on Lk Mich., Sister Bay Boat Tour, Northern Sky Theater, winery tour & more! \$619 pp dbl occupancy.

N. ROCKY MTNS NAT'L PARKS, Sept. 5-17. De-luxe motor coach, 20 meals, Mt Rushmore Nat'l Memorial, cruise on Lk McDonald in Glacier Park, Buffalo Bill Museum & more! \$2,159 pp dbl occ.

Call 4-Seasons at 800-328-4298 and reserve space today! Be sure to tell us you are Steele-Waseca members!



youth tour connection

Delegates appreciate Youth Tour experience

Steele-Waseca Cooperative Electric Youth Tour delegates, Jessica Pieper of Owatonna and Malloree McCarthy of Minnesota Lake, experienced Washington, D.C., June 9-14, as part of the 2018 Youth Tour.

“Our 2018 Youth Tour trip was an amazing opportunity to see the capital of our nation,” stated Jessica. “We par-took in a tour of the main monuments and memorials of D.C. The memorials of Vietnam and Korea were especially beautiful.

“We also coincidentally were able to see Vice President Mike Pence drive by in his limo with his motorcade. We were all very excited and it was cool to see him wave back at us.

“One of the nights, 1000 Youth Tour Delegates from all over the nation gathered for dinner and speakers. They in-troduced us to some of the people that made the trip possible. Mike Schlappi (pictured in the wheelchair below with members of the Minnesota delegation and Jessica standing in the back row on the far right) our speaker for the night was an excellent speaker and really in-spired me to do my best.”

Pieper detailed their Capitol Hill expe-rience with seeing the Senate in session, and speaking with Minnesota Senators and Representatives regarding issues the delegates cared about and what they are doing for rural Minnesota.

“Our last night we were able to talk to the other delegates from all over and trade pins and patched with them, I al-most collected them all,” said Jessica. “We talked about how much snow we get here in Minnesota and how hot it can get in Texas. It was great to meet so many other kids from around the na-tion.



Steele-Waseca Cooperative Electric Youth Tour delegates, Malloree McCarthy (left) of Minnesota Lake and Jessica Pieper of Owatonna, pose for a photo with the Capitol in the background. 1063383

“I would highly recommend this trip to any high school sophomore or junior who is in the Steele-Waseca area. It opened my eyes to the world. I learned so much about the world of politics and how everything works in our govern-ment. Even though I am not yet of age to vote, this trip has inspired me to be politically knowledgeable so when I do turn 18 I know what I am doing. Even if you are not into politics it is still a great opportunity to see Washington, D.C. in all its glory. Thank you Steele-Waseca for your kindness of sending me to Washington, D.C.”

Steele-Waseca Youth Tour Delegate Malloree McCarthy explained how the flight to Washington, D.C., didn't go according to plan.

“We were almost to D.C., and then we started circling over Pittsburgh because of bad weather in D.C., and we had to land in Pittsburgh because the plane was low on fuel,” stated Malloree. “After we fueled up we left for D.C. We were

supposed to be in D.C. at 8 but we did not leave the airport until 11:30.

“The next day we went to the Lin-coln, Vietnam, Korean, MLK, FDR me-morials in the morning,” said Malloree. “Then we went to Arlington National Cemetery where we saw the changing of the guard ceremony and 2 wreath laying ceremonies. After Arlington we went to some of the Smithsonian insti-tutes.”

McCarthy also reflected on seeing Vice President Mike Pence near Ford's Theatre, “This was probably my favor-ite moment of the whole trip.”

The nighttime tours during their first full day in Washington, D.C. included the World War II, Thomas Jefferson, Air Force, and Pentagon 9/11 memorials.

The following day included visits to Mount Vernon and the Marine Corps Memorial. The day included walking around Old Town Alexandria.

“On the 4th day we went to the Iwo Jima Memorial and then we went to the Newseum,” stated Malloree. She shared how the Newseum is the museum all about the 1st Amendment. Afterwards, the delegates “went to some of the other Smithsonian institutes.” Malloree ex-plaind their visits were taking place at the same time the Washington Capitals were having a victory parade for win-ning their first-ever Stanley Cup.

After touring the Holocaust Museum, “...we went to the musical Scottsboro,” said Malloree. “This was about 9 Afri-can American men accused of rape.

“Then the last day in D.C., we went to the Capitol and met with some of our congressional leaders such as Jason Lewis and Tina Smith. Then we went to the Library of Congress,” said Mal-loree. “This will be a trip that I will never forget!”

McCarthy (front row, second from left) had the opportunity to question Minnesota's U.S. Senator Tina Smith.

cookin' connection

Zucchini Cookies

Doris Waknitz

Pemberton

1 c. sugar
1/2 c. softened shortening
1 egg, beaten
1 c. raisins
1 c. pecan chips
1 c. chocolate chips

2 c. flour
1 tsp. soda
1 tsp. cinnamon
1/2 tsp. salt
1 c. zucchini
1 tsp. vanilla

Combine flour, soda, cinnamon, and salt in medium bowl and put aside. Combine butter, sugar, and egg in large bowl and beat well. Gradually add flour mixture. Stir in remaining ingredients. Drop by teaspoon 2" apart on greased pan. Bake at 350° for 10-13 minutes (don't overbake).

Please use a 3 x 5 card when submitting your recipe. The member whose recipe is published will receive a \$7 energy credit.



Steele-Waseca Cooperative Electric's solar subscribers will see a 44 kWh credit per panel on this month's statement for energy generated during June 2018. Learn more about community solar and The Sunna Project by visiting Steele-Waseca's website, swce.coop.

Was your account number in Sparks?

Each month five account numbers are printed in *Sparks* and a total of \$35 in energy credits is divided among however many of those numbers are found. For example, if all numbers are found, a credit of \$7 will be applied to the members' following month's electric bills; or, if only one number is found, that member receives the full \$35 credit. Members finding their numbers who have a load management receiver on their dual fuel, electric water heater, air conditioner, or genset will receive an additional \$7 credit. When you find your number, phone our office no later than the 7th of the month following receipt of the *Sparks*, or the amount will be forfeited.

July issue of Sparks



Numbers found:
Lois Falkenberg

Numbers not found:
Mr./Mrs. Lynn Babcock
Bradley/Michelle Palmer
Jacob/Breanna Uhler
Travis J. Kabes



sparks • august 2018

Sparks in brief . . .

• **Want easy energy payments?** Sign up for **EnergyPay Plus**, our automatic payment plan, or **Energy Prepay**, our discounted advance payment plan. Contact our office for details. You may also pay your bill online at www.swce.coop. By entering your Steele-Waseca username and password you can also view a 13-month history of your account.

• **If you have changed or added phone numbers**, please contact SWCE to update your contact information.

• **Need a new water heater?** For information about our Westinghouse Electric Water Heater Program, phone Cindy Butterfield at our office between 8 a.m.-3:30 p.m., 446-4204 / 800-526-3514.

• **June temps** – The average high temperature for June was 79° F, while the average low was 63° F. This resulted in 191 Cooling Degree Days (CDDs), and 4 Heating Degree Days (HDDs). They compare to last year's average high of 80° F and average low of 58° F. This resulted in 153 CDDs and 30 HDDs.

• **ENERGY STAR® Rebates** – In 2018, all ENERGY STAR refrigerators/freezers (with recycling), electric clothes dryers, dehumidifiers, central air conditioners, air and ground source heat pumps, light emitting diode (LED) bulbs purchased (limit 5) are eligible to receive rebates (may not be combined with special promotions). Rebate request forms must be submitted within 90 days of purchase. Rebate forms are available at www.swce.coop. For more information or to receive a rebate request form, phone Cindy Butterfield at 446-4204 or 800-526-3514.

• **Steele-Waseca's tree service contractor** – Carr's Tree Service, Inc., is contracted to do SWCE's tree trimming. To report a tree concern, phone:

507-451-7340 / 800-526-3514

STEELE COUNTY TIP LINE

866-878-7964

TO BE USED TO REPORT ANY CRIME OR SUSPICIOUS ACTIVITY ANONYMOUSLY

COVERS ALL OF STEELE COUNTY INCLUDING THE CITIES OF:

OWATONNA ELLENDALE
BLOOMING PRAIRIE MEDFORD

health & safety connection

HOW TO PREVENT ELECTRIC SHOCK DROWNING



Each year, 3,800 people die from drowning. Electric shock drowning occurs when an electric current escapes boats, docks and lights near marinas, shocking nearby swimmers. There are no visible signs of current seeping into water, which makes this a hidden danger. The electric shock paralyzes swimmers, making them unable to swim to safety.

ELECTRICAL SAFETY TIPS FOR:

Swimmers

- **Never swim near a boat or launching ramp.** Residual current could flow into the water from the boat or the marina's wiring, potentially putting anyone in the water at risk of electric shock.
- If you feel any tingling sensations while in the water, **tell someone and swim back** in the direction from which you came. Immediately report it to the dock or marina owner.

Boat Owners

- **Ensure your boat is properly maintained and consider having it inspected annually.** GFCIs and ELCIs should be tested monthly. Conduct leakage testing to determine if electrical current is escaping the vessel.
- **Use portable GFCIs or shore power cords** (including "Y" adapters) that are "UL- Marine Listed" when using electricity near water.
- Regularly have your boat's electrical system inspected by a certified marine electrician. **Ensure it meets your local and state NEC, NFPA and ABYC safety codes.**

IF YOU SEE ELECTRIC SHOCK DROWNING TAKING PLACE:



Sources: Electrical Safety Foundation International, Centers for Disease Control and Prevention

Jazz Jam on the Patio coming to Owatonna

Jazz Jam on the Patio returns to the Steele County Historical Society on Sunday, July 29, at the History Center in Owatonna.

The live jazz jam session from 2 to 4 p.m., will include a variety of professional and amateur musicians. Local musicians and vocalists of all abilities are invited to join in the jam.

Anyone who would like to join in for a song, a set, or the whole jam is welcome. That's what makes it a jam session. Regardless of your instrument, brass, woodwind, bongos, harmonica, kazoo or jug, stop by and play along or bring your voice and sing along!

The event is FREE. A wine, beer, and soda cash bar will be available. The History Center is located at 1700 Austin Road, Owatonna. For more information on the event, call 507-451-1420.



If you wish to reduce clutter and add convenience, you may elect to receive an email that your bill is available to view online. Log in to your online account at www.swce.coop, click on the "Alerts" tab, and check "Bill Notification," and "Electronic Only." Enter your email address and click "Update" to receive your bill notification by email instead of in the mail.

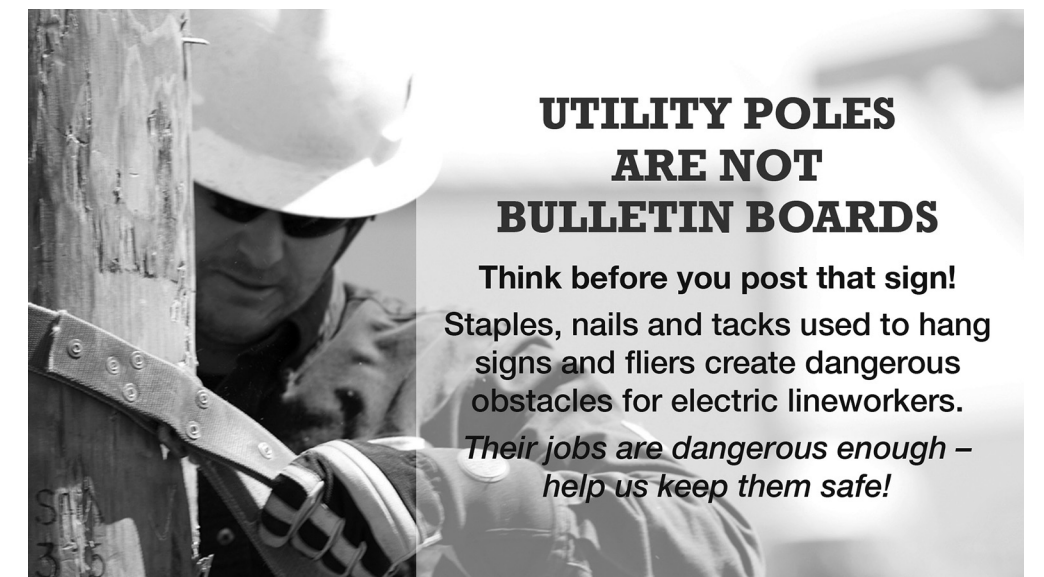
Is my off peak/dual fuel being controlled today?

Visit Great River Energy's website at www.greatriverenergy.com and click on "Load Management"

Need a history of controls? Click on "History" on the "Load Management" page

UTILITY POLES ARE NOT BULLETIN BOARDS

Think before you post that sign! Staples, nails and tacks used to hang signs and fliers create dangerous obstacles for electric lineworkers. *Their jobs are dangerous enough – help us keep them safe!*



sparks • august 2018

5