

member connection

Schwab hired to new position at SWCE

Steele-Waseca Cooperative Electric (SWCE) has announced the hiring of Jack Schwab to the new position of Safety Coordinator/Member Service Representative as of March 1, 2018. Schwab joined Steele-Waseca in November 1992, and most recently was a line foreman with the co-op. Among his duties, Jack will also coordinate the annual meeting and the Coal Creek Tour to Underwood, North Dakota. 28817



Never mind millennials, prepare for Gen Edge

by Magen Howard, contributing writer for the National Rural Electric Cooperative Association

Step aside, millennials. Gen Edge is about to enter your workplace in a big way.

Just as we were figuring out millennials—born from 1980 to 1995—Gen Edgers are turning 22 and many more are joining the workforce. The good news is, co-ops have a lot to offer members of the younger generations, said Phil Gwoke of Bridgeworks, a consulting firm that studies generational differences.

“Co-ops offer benefits as well, or better, than most organizations,” Gwoke told a Feb. 27 breakout session at the 2018 National Rural Electric Cooperative Association (NRECA) Annual Meeting, showing data busting the myth that younger people aren’t as concerned with benefits and compensation as their older-generation colleagues.

And that’s just the tip of the iceberg. Gen Edge is interested in innovation, experiences and understanding the why behind the products they consume and the work they do, and co-ops do all of that exceptionally well, Gwoke said.

To help us understand this new generation—and to attract and retain them as employees—it’s important to understand the societal experiences in their formative years, particularly when it comes to communication, he continued.

For Baby Boomers, the main com-



If you’re still trying to understand millennials, Phil Gwoke says you’ll also have to figure out Gen Edge. (Photo by Alexis Matsui)

munication method was the rotary phone. Gen Xers had pagers. Millennials had cellphones. And Gen Edgers have iMessage, where using periods as punctuation implies anger and emojis reign supreme.

“A new level of unwritten rules and etiquette is forming” based on instant messaging, which all Gen Edgers grew up with, Gwoke said. “What’s evolving is this new way of interpreting emotion that none of us grew up with.”

Gen Edge is the product of Baby Boomer individualism, Gen X independence and millennial cooperation, Gwoke continued. The influence of each generation’s experience informed the broad personality of the next.

“Gen Edge is a culmination of all

Annual Cogeneration Notification to Membership

In compliance with Steele-Waseca Cooperative Electric (SWCE) adopted rules relating to cogeneration and small power production, SWCE is obligated to interconnect with and purchase electricity from cogenerators and small power producers whom satisfy the conditions as a qualifying facility.

SWCE is obligated to provide information free of charge to all interested members upon request regarding rates and interconnection requirements.

All interconnections require an application and approval to become a qualifying facility. Any dispute over interconnections, sales, and purchases are subject to resolution by SWCE under Local Democracy Legislation, approved by the SWCE board of directors during their regular meeting in August 2017.

Interested members should contact SWCE, 2411 W. Bridge St., PO Box 485, Owatonna, MN 55060-0485, or call 507-451-7340 or toll-free 800-526-3514.

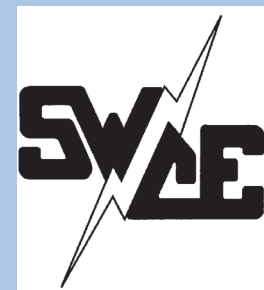
those other generations, with a few twists,” he said. Influencing Gen Edge are the effects of the Great Recession. Their Gen X parents lost jobs and may-be homes. So unlike older millennials, who are more optimistic and more concerned with work-life balance, Gen Edgers are concerned with steady paychecks and sound benefits.

“Gen Edge is driven to succeed,” Gwoke said. And when it comes to hiring Gen Edgers, the good news is “they have realistic expectations.”

Gwoke recommended embracing Gen Edge’s YouTube culture to help them help themselves in the workplace. Eighty percent of teens use YouTube as a source for advice, research or to understand their homework, he said, so building a stock of short how-to videos will help them learn their jobs.

But at the end of the day, people still need to know how to talk to one another, and Gen Edge needs some help there.

“Share with Gen Edgers the benefits of communication,” Gwoke said. Technology has changed the way people communicate, but that doesn’t mean traditional methods have lost their value. It just means they haven’t been effectively coached to use them.”



the power of human connections

sparks

Your Touchstone Energy® Cooperative

a monthly newsletter from Steele-Waseca Cooperative Electric

May 2018

inside connections

- 2 Manager Connection
- 3 2018 board of director nominees
Former SWCE Director Kenneth Mracek dies at age 80
Meatball dinner in Geneva
- 4 Cookin’ Connection
SWCE community solar update
Sparks in brief
Steele County Tip Line
- 5 GFCI installation and testing
- 6 Ad Connection
4-Seasons Vacations
- 7 Ad Connection
Energy credits awarded by GRE
- 8 Schwab starts new position at SWCE
Cogeneration notification
Gen Edgers joining workforce

calendar of events

May

- 1 Law Day
- Loyalty Day
- 3 National Day of Prayer
- 6-12 National Nurses Week
- 8 National Teacher Day
- 12 Minnesota fishing opener
- 13 Mother’s Day
- 15 Peace Officers Memorial Day
- 19 Armed Forces Day
- 19-25 National Safe Boating Wk
- 28 Memorial Day
- SWCE office closed



Member-owners encouraged to attend Steele-Waseca Cooperative Electric’s 82nd annual meeting

Steele-Waseca Cooperative Electric member-owners are encouraged to attend the co-op’s 82nd annual meeting on Tuesday, June 5, 2018.

The meeting will be held at Steele-Waseca’s headquarters located at 2411 West Bridge Street in Owatonna.

The annual meeting is open to Steele-Waseca member-owners and their guests. The doors will open at 9 a.m., with display and informational booths open until 10:15 a.m.

Parking will be available on the property surrounding Steele-Waseca’s headquarters. Miner’s Outdoor & Rec, located at Highway 218 South, Blooming Prairie, will be supplying several golf cars to shuttle you from your vehicle to and from the meeting.

There will be two early bird drawings for prizes that will take place prior to the start of the annual meeting. The business portion of the meeting will begin promptly at 10:30 a.m. 15574

There is no requirement to call Steele-Waseca to register your attendance for



Steele-Waseca’s annual meeting in 2017 was attended by 702 members and guests.

the annual meeting. Members and their guests will only be required to register at the entrance to the annual meeting on Tuesday, June 5.

To be eligible to vote for directors, you must be registered by 10:30 a.m. sharp. Director candidate profiles are featured on Page 3 in this edition of Sparks. Additional candidates may be nominated from the floor during the annual meeting with nominations officially closing at that time.

After the election results are announced, there will be a drawing for grand prizes and the meeting will be adjourned. Following adjournment, a “buffet” lunch will be served by Hy-Vee of Owatonna featuring smoked pork chops, vegetables, potatoes, salad, dinner roles, coffee, white and chocolate milk, water, and soda, with Dairy Queen Dilly® Bars for dessert.



Addison Meili, 8, the daughter of Mark and Tara Meili of Faribault, is pictured with Steele-Waseca Cooperative Electric Communications Specialist Randy Sobrack during last year’s Steele-Waseca annual meeting. Addison selected prize drawing tickets onstage during the meeting.



A “buffet” lunch will be served by Hy-Vee of Owatonna following the adjournment of the annual meeting.

Published monthly by
Steele-Waseca Cooperative Electric
2411 W Bridge Street, PO Box 485
Owatonna MN 55060-0485

Website: www.swce.coop
Email: swce@swce.coop
Fax: 507-446-4242



Board of Directors

PJ Duchene District 1
Geraldine Lienke District 2
Duane Edwardson, *Chaplain* . District 3
Dennis Ringhofer District 4
Rodney Krell District 5
Gary Wilson, *President*,
GRE Director District 6
John Beal, *Vice President* District 7
Ronald Sommers District 8
Assistant Secretary/Treasurer
Renee Malecha District 9
Secretary/Treasurer

Management

Syd Briggs *General Manager*

Division Managers

Darla DeVries *Office*
David Lundberg *Finance*
Kim Huxford *Operations*

Office Hours

8:00 a.m.–4:30 p.m., Monday–Friday

Operations Office Hours

8:00 a.m.–3:30 p.m., Monday-Friday

For Customer Service, Billing Questions and Power Outages Phone:

507-451-7340 or 800-526-3514

Before calling to report an outage

1. Check fuses and circuit breakers in your home and on meter pole.
2. Check with your neighbors to see if they have power.
3. Look for possible causes such as a tree branch on wires, a broken pole, twisted wires, etc.

To leave a non-emergency message whenever SWCE's Office is closed:

Phone 507-451-7340 or 800-526-3514
Press “2” and leave message including name, account #, and phone # you can be reached at the following business day.

Call *Before* You Dig
Gopher State One Call
811 or 800-252-1166

48-hour notice required for **ALL** underground cable locations

manager connection



By Syd Briggs,
General Manager

Communities large and small as well as companies across all industries are committed to safety. Sports leagues, at every level, take safety seriously. Unfortunately, when safety becomes an afterthought and isn’t part of a standard operating procedure, it’s just a matter of time before someone is hurt or killed.

Safety is a serious issue, especially when it comes to electrical safety. At Steele-Waseca Cooperative Electric, it’s a number one priority for our employees and our communication to you, our member-owners. 33567

Steele-Waseca has created a culture of safety by putting our employees’ safety and that of the communities we serve above all else. At its essence, Steele-Waseca’s mission is to provide *safe, affordable and reliable* electricity to its member-owners, but equally important, we want to return our workers home safely to their loved ones. To do this requires ongoing focus, dedication, and vigilance.

Working with electricity is an inherently dangerous job, especially for line technicians. Steele-Waseca maintains a focus in keeping employees and our member-owners safe around electricity.

The co-op has established and follows safety protocols based on leading national safety practices for the utility industry. We require our line technicians to wear specialized equipment when working next to or with power lines. There are specific protocols our line technicians follow when dealing with electricity. Our

safety team, which involves all levels of employees, has regular meetings where they discuss upcoming projects from a safety perspective. They monitor and track near-misses of accidents in order to understand them, share “lessons learned,” and improve in the future.

Equally important, we encourage all of our crews to speak up and hold each other accountable for safety. By cultivating a culture of openness and transparency, we promote problem-solving with regard to safety, rather than defaulting to a blame game. As appropriate, Steele-Waseca briefs contractors on our safety protocols and set expectations for their engagement.

Especially because we live and work in the community we serve, we care about our neighbors. Steele-Waseca conducts electrical safety demonstrations in schools and for community events.

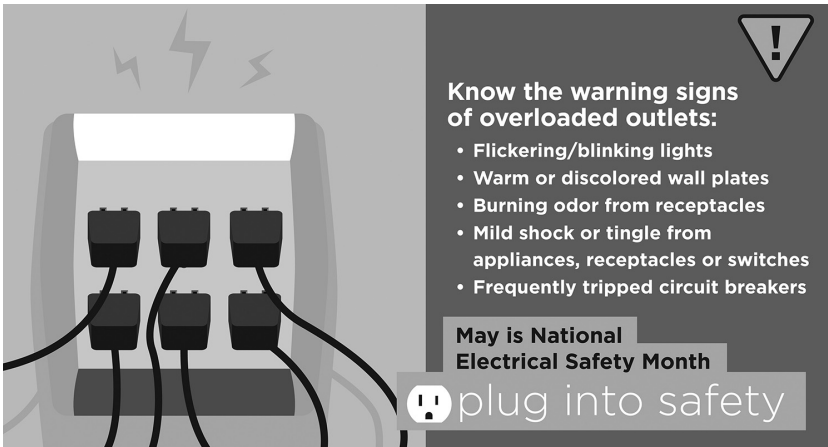
May is National Electrical Safety Month. According to the Electrical Safety Foundation, thousands of people each year in the U.S. are critically injured and electrocuted as a result of electrical fires, accidents, and electrocution in their own homes. Many of these accidents are preventable. There is much you can do to keep yourself and your community safe around electricity.

Don’t attempt electrical do-it-yourself projects that you haven’t been trained for, or overload your outlets. Report downed power lines, unlocked substations, or padmount transformers that look amiss. If you would like Steele-Waseca to provide a safety demonstration at your school or community event, please contact our

Safety Coordinator Jack Schwab.

Be mindful when it comes to electrical safety. Pause and take the extra time to plug into safety.

Syd



ad connection

(For Sale ads continued from Page 6)

2013 FORD F-350 LARIAT, blk, leather seats, much more, 72,000 mi., \$35,000. 456-4458.

REPLACEMENT & PASTURE EWES. 213-1466.

LANDA HOT WATER PRESSURE WASHER, used, 4 gpm@3000 psi, 230V, single phase, complete shutdown timer, elec. ignition, NG, reconditioned, \$2995. 583-2703.

QUILT in shades of pink, new, never used, double sided, 108"x72". 451-8888.

1965 HAVILAND BAVARIA CHINA, service for (12), wheat pattern + serving pieces, exc. shape, \$75. 384-7358.

TRIPLE "C" 16" SADDLE, handmade in USA, \$575; **FANCY DELUXE 10" PONY SADDLE**, \$125 (both in great shape & brown—cash only). 456-3905.

BLK ANGUS BEEF: qtrs, halves or whole avail., semi-organically & locally raised. 330-2452/Matt.

SEARS CRAFTSMAN 30-GAL. AIR COMPRESSOR, 5-hp, 220V. 685-4126.

14' DEEP WIDE ALUMACRAFT BOAT, big screen, color Lowrance dpth findr, seats, anchor, batt., (3) like new tires on tlr (both in vry gd cond.). 451-0996.

MINI STORAGE IN FBO: 6'x8'/\$49/mth, 10'x24'/\$125/mth; **MINI STORAGE IN MORRISTOWN**: 10'x20'/\$99/mth. 333-0319.

USED ENGINES, TRANSMISSIONS, AUTO & TRUCK PARTS, 30-day warranty. 332-2300.

KATAHDIN HAIR SHEEP, never shear sheep again, great mothers, fast growth, great for beginners, organic & pasture based. 451-2722.

5.30 X 12 TRAILER TIRE & 5-HOLE RIM, tire is new, \$70. 952-652-2661.

PLASTIC BARRELS; 2-WHEEL TRAILERS; BASKETBALL STAND, HOOP & PIPE. 664-9426.

1963 INT GAS TRACTOR w/loader, narrow front, pwr steering, gd torque, like new rear tires, \$3500. 339-0135.

CRAFTSMAN GT6000 GARDEN TRACTOR, 26-hp Kohler V-twin engine, 169 hrs, 54" deck, vry gd cond., \$1350. 334-9252.

2006 HONDA PILOT EX-L, 165,000 mi., silver w/ gray interior, \$7200. 383-0711.

HUGE RUMMAGE SALE at Izaak Walton Game & Fish Bldg @ Steele County Fairgrounds, Fri & Sat., May 11-12 & 18-19. 363-1710.

OLD WHEEL HORSE 46" LAWN MOWER, runs but needs work. 451-1505.

DECK STEPS made w/treatd lumbr, \$75. 528-2763.

2005 H-D ROAD KING, dark red, 26,916 mi., Stage-2 engine, 95" motor, 16" high rise chrome bars, vry nice bike, \$7500. 491-4565.

Steele-Waseca Cooperative Electric (SWCE) assumes no liability for the content of, or reply to, any item posted. The party posting any advertisement assumes complete liability for the content of, and all replies to, any advertisement and for any claims against SWCE as a result thereof, and agrees to indemnify and hold SWCE harmless from all costs, expenses, liabilities and damages resulting from, or caused by, any advertisement or reply thereto.

Great River Energy announces energy credit recipients from survey participants

Steele-Waseca Cooperative Electric’s wholesale power provider, Great River Energy (GRE), has announced recipients of a \$20 energy credit for participating in their residential energy use survey mailed this past fall to randomly selected Steele-Waseca members.

FARMALL (IH) 400 TRACTOR w/6' Artsway belly mower, (2) hyd. outlets, new belts on mower deck, gd cond., \$2975; **CASE SC TRACTOR** w/7' Vaughn loader, new front tires, gd cond., \$2750. 317-2910.

(2) OLD DOCTOR BAGS: (1) brown & (1) blk; **CANARY GRASS** for bedding; **MAYTAG GAS ENGINE**. 744-2871.

ROOF SHINGLING, trusted since 2000, licensed & insured; **LAWN CARE** also avail. 271-9129.

(2) SETS OF 4-WHEELER CHAINS, \$50; **30' KELLER EXTENSION LADDER**, \$275; **2002 POLARIS XC 700 SNOWMOBILE**, \$2100. 332-8673.

2010 PUMA CAMPER, 39', sleeps (8), full-size fridge & stove, elec. canopy, (2) bathrms. 390-5270.

SHIPPING CONTAINERS, store your stuff on your property, moisture & rodent proof, 20' & 40' in stock. 612-418-4375.

10' X 10' GAZEBO w/o netting, new in box, \$50. 334-3676.

2006 H-D SPORTSTER 883, 11,000 mi., lots of upgrades. 402-1796.

ELEC. 406 WHEELCHAIR, bought new, used 2.5 mths, exc. working cond., weight 223.5 lbs, \$1900. 779-4456.

16' ALUMACRAFT DOMINATOR BOAT, 50-hp Mercury motor, exc. cond., \$3000/obo. 838-8568.

MANKATO FISH HOUSE, 4x7, full 20-lb LP tank w/ Sunflower heater, \$100. 421-2521.

A-C B TRACTOR w/mounted woods 42" mower, vry gd cond. 952-652-2239.

ROOFING; LIGHT REMODEL WRK. 715-558-6691.

GELDING, gd riding horse, 16-y-o, white, well broke, vry gentle, \$1500; **HORSE BUGGY**, 1-seat, blk w/ red wheels, \$500; **FANCY HORSE HARNESS** for buggy, was for Tenn. Walker horse, \$500. 527-2909.

CENTURY WIRE FEED WELDR, 110V, \$225; **4-TON HYD. PORTA PWR KIT**, \$100; **JD 3020D** w/loader, \$10,000; **JD 37 HAY MOWER**, \$800. 330-3945.

'89 KIEFER 2-HORSE STRAIGHT LOAD TRAILER w/ramp, could also be used as enclosed utility trailer, \$2750/firm. 456-8639.

FARMALL M, 12V fenders, NF, (3) new tires, lights, runs gd. 676-2885.

PARTING A-C WD TRACTOR, wide front, nice tires & rims, gd sheet metal; **BOBCAT 310 SKID LOADER**, all rebuilt, only 40" wide, \$5200. 612-272-1311.

SHELL FUEL TANK, 250-300 gal., \$100; **SUPER A TRACTOR**, wide front, turf tires on rear, 60" woods mower, hydraulics, \$2800. 213-8823.

MM R TRACTOR, runs gd, \$1500. 465-8566.

2006 BUICK RENDEZVOUS, used motor, replaced at 190,000 mi., as is, \$1500. 279-4191.

24' ALUM. PONTOON, 25-hp. Johnson w/trailer, \$2750; **30' TRAVEL TRAILER FOR RENT** w/slide-out, \$50/day. 210-4252.

HOLSTEIN STEERS, 300-600#. 451-3678.

250-BU. GRAVITY BOX & gear, \$375. 456-7614.

2008 WILDERNESS 260RLS TRAVEL TRAILER, exc. cond., large slide out, (2) doors, full awning. 451-6046.

A-C 7020 TRACTOR. 583-2026.

PELICAN CANOE, 15.5', vry gd cond. 456-8520.

AFS 900 WOOD PELLET/CORN STOVE, well maintained, not much use, includes heat exchanger & glycol drained from system, \$1750. 456-1852.

LAWN MOWERS, push & self-propelled, they have been stored & not run for a couple of yrs, \$10/each. 645-6286.

JD 435 4-ROW NARROW ROW CORN HEAD FOR PARTS; HESSTON PT10 HAYBINE FOR PARTS. 744-5277.

WRANGLER TIRE ON RIM, P26570R17, new, \$40/obo; **(12) BEARCAT FLAIL KNIVES**, new, \$24/obo; **PRESSURE WASHER**, 5.5-hp Honda motor, pump needs seals, \$40/obo. 334-5412.

FARM CATS, tame, healthy, spayed/neutered, var. genders/colors/ages, approx. \$40/\$50 rehoming fee. 213-0059.

1997 FORD F-250 SUPERCAB, 7.3 diesel, new tires, lic., brakes, has topper, bedliner, chrome grille guard, vry gd shape, \$5200/obo. 451-9614.

FULL-SIZE BED, BOOKSHELF, & FOOTBOARD, real wood, metal sides, gd shape, other things, \$100. 583-6679.

HVY DUTY TRLR HOUSE FRAME, 30' 6" long x 6' 6" wide, (3) axle, \$1000/obo; **CAMPER TRLR FRAME**, 20' 6" long x 7' 4" wide, dbl axle w/14" tires, \$600/obo. 451-5131.

1947 FARMALL M w/NL picker; **30' HAY CONVEYR** w/motor; **VERMEER 605J ROUND BALER**; **FORD 917H FLAIL CORN CHOPPER/MOWER**, 65"; **JD 4-ROW PLANTER**. 685-2443.

MUSCOVY HENS for setting or butchering, 17 hatch; **PAIR OF WHITE EMBDEN GEESE**, 17 hatch; **WHITE EMBDEN GANDER**. 446-0090/lv. msg.

(2) PADDLEBOATS, used, (1) older, other like new, approx. 4-yrs-old w/removable top; **LIFT**, holds (2) paddleboats (on French Lk). 641-229-9069.

(3) DOWNHILL ROSSIGNOL SKIS; **(2) ELEC. BASEBOARD HEATERS**, 220V. 470-262-7696.

STEEL GRAIN BIN, approx. 13'x6', hand crank slide on bottom, \$550. 651-260-9225.

GE MICROWAVE, 4-yrs-old, vry clean, \$75; **20-GAL. FISH AQUARIUM**, comes w/all accessories, \$175. 456-7757.

The results of the survey help GRE determine future load growth and residential usage patterns.

Martin, Owatonna; Geraldine H. Berg, Blooming Prairie; Mr. & Mrs. Douglas M. Eustice, Waldorf; and Mr. & Mrs. James C. Possin, New Richland.

The results of the survey help GRE determine future load growth and residential usage patterns.

ad connection

give away

STORAGE SHELVEING, solid wood, 30"x76"x88" (height), you haul. 456-2017.

3-PIECE ANDERSON SLIDING WINDOW, 9' door center slider, nice for cabin patio door, comes w/ hardware, but no screen. 334-5388.

WOOL MATT. PAD, qn-sz. 451-9445.

FREE ONLINE CLASSIFIEDS, you place & remove your own ad on SWCE's website, swce.coop, these are separate from **Sparks** & will not appear in **Sparks** unless mailed, delivered, faxd or emailed to SWCE.

wanted

LILLISTON CULTIVATOR, prefer 6-row or larger. 456-7633.

PAINTING JOBS, house & outbuilding painting & prep, 20+ yrs exper., call for an estimate. 320-8225.

UNWANTED BIKES & LAWN MOWERS, \$ paid on delivered. 330-3178.

BROKEN DOWN LOG SPLITTER FOR PARTS. 645-4463/Brent.

PAIR OF TRACTOR TIRES, 18.4x38". 213-1466.

OLDER POSTAGE FROM USA, any cond., \$ paid on site. 676-0970.

WASTE/USED OIL, 200-gal. minimum. 420-7429.

JUNK & UNWANTED APPLIANCES, no TVs or computers, free drop-off. 210-6728/Dan/lv. msg.

JUNKERS OR REPAIRABLES: trucks, cars, pick-ups, most constr. & farm equip., top \$ pd. 332-2300.

ESTATES, COLLECTIONS, FISHING OR HUNTING EQUIP., & METAL SIGNS, willing to purchase your collection/estate, shed or barn full of stuff. 279-0431/Mark.

POCKET GOPHER TRAPS. 451-6507.

OLDER SMALLER COMBINES for parts or scrap iron. 330-3945.

BARN, GRANARY, &/OR OUTBUILDINGS to repurpose the lumber; **OLD TIN**; **BARN SIDING**; **LUMBER**. 330-0258/Tim.

SHERIDAN .20-CAL. PELLET RIFLE. 465-8566.

GOATS. 451-3678.

Sparks Free Classified Ad Form for all SWCE Members

Ads need to be received in our office by **May 7** to ensure being printed in the June *Sparks*. Please print neatly or type your ad of **20 words or less** on this form. We reserve the right to edit ad copy to allow space for more ads. Ads received after the 7th will be printed in the July issue.

☐ For Sale ☐ Wanted ☐ Give Away

Phone # _____ Account # _____

Name _____

Clip and mail to: SWCE, PO Box 485, Owatonna MN 55060-0485, or fax to: (507) 446-4242 or email your ad to: sparks@swce.coop.

All area codes are 507 unless otherwise noted

WILL DO: tiller, plow, blade, and bucket work w/compact tractor. 451-6046.

ANTIQUE OR OLD COLTS & SMITHS. 301-9053.

MANURE SPREADERS & MIXER MILLS, big or small, older or newer. 456-7742.

ALUM. UPRIGHT SHOW BOX, FAN CAGE OR OTHER CATTLE SHOW SUPPLIES. 213-0059.

for sale

RALEIGH DASH, 700x35c, 21-spd, men's hybrid, \$100; **TREK MT 220**, F.S. Fork, 24x175, boy's, 21-spd, \$100. 330-3178.

SONY CAR STEREO w/speakers, AM/FM/CD/MP3, remote, (4) speakers, new, \$150; **TV CONVERTER BX**, \$50; **FLARE BX**, exc. shape, \$675. 455-3881.

CLIMATE CONTROLLED UNITS FOR RENT, 11'x9' to 16'x10'. 332-4623.

JD 640 HAY RAKE, exc. shape; **BETTER BUILT VAC PUMP**, \$300; **K.G. JOHNSON FARROWING CRATES** w/feeders & waterers. 380-9580.

1949 MM 2A, 6V, trip bucket, gd running order, \$1200. 461-3323.

BEACHFRONT VACATION CONDOS FOR RENT in Fort Myers Beach, South Padre Island & Mexico, visit www.sandysbeachfrontcondo.com for details & photos. 612-865-9604/Sandy.

ENTERTAIN. CENTR., 20"Wx59"L, oak trimmed w/glass doors, incl. 32" TV, \$100/obo; **BROYHILL DRY SINK CABT**, 40"Lx36"Hx18"W, has large drawer & open cabt w/(2) doors below, \$200/Jo. 334-5961.

CABIN on French Lk on leased land, 2-bdrm, incl. dock, \$70,000. 481-4348.

15-HP BRIGGS & STRATTON ENGINE, \$100; **POLARIS 700CC JET SKI**, \$1000; **JET SKI LIFT**, \$50; **TRUCK TOOLBOX**, alm. chest, \$50; **BOAT & TRLR**; **NEW TUBE** w/rope, \$50. 271-6592.

MINI STORAGE UNITS, Blmg Prairie. 456-2957.

'96 TERRY 5TH WHEEL CAMPER, 27.5', new tires & extras, \$5000/obo (will deliver, setup if needed). 202-4887.

TREE TRIMMING, REMOVL & STUMP GRINDING, pro climber & aerial lift to U of M guidelines; **FRONT CHROME BUMPER** for an F-650, new. 456-1609.

'07 KEYSTONE SPRINGDALE 38' TRVL TRLR w/(2) slide outs, sleeps 10, washr, dryr, fridge, kitchn area w/dbl sink & large counter, big bathrm w/full-sz showr, \$14,000. 451-9445.

CABIN, French Lk, leasd land, 80' shoreline, patio, deck, Amish woodstov, sunrise, \$65,000. 334-6362.

15.5-TON CAPACITY DUMP TRUCK AVAIL. for all your hauling needs: rock, gravel, dirt, etc. 456-7774.

2006 REDBALL 570 SPRAYER, 80', 1200-gal., 46" tires, exc. cond., \$12,500. 381-8079.

SHINGLING; LIGHT CONSTRUCTION; TREE REMOVAL. 456-0296/free estimates.

FORTUNE CREEK TRL LOTS, covenant allows for a pole shed, starting at \$75,000. 838-5033/John.

DRIED RED OAK, approx. 600 board ft. 456-1017.

RENTAL, Izaak Walton League Bldg., 4 mi. south of Owat., seats 100, full kitchen, grill, Wi-Fi, \$100. 451-7946.

A.S.C.A. REGISTERD AUSTRALIAN SHEP. PUPS, born 3/11/18, 1st shots, wormed, docked tails & dew-claws removed, farm & family raised. 475-2509.

SONY HT-CT780 TV SOUND BAR w/wireless sub-woofer, \$269. 456-2060.

WHEEL HORSE 418A GARDEN TRACTOR, 18 hp Kohler engine, incl. 42" mower deck, hydraulic equip. lift, \$1100. 952-836-6782/Bill.

HOMEMADE FISH HOUSE/WHEELHOUSE, 18'x7.5' & 3.5' V-nose, has (6) holes, \$2400 (may consider trade or partial trade for enclosed trailer or toy hauler fish house). 838-8958.

2014 TOWN & COUNTRY VAN, handicapped accessible, in-floor side ramp (top rated Rollx conversion), 69,000 mi., cherry red, \$27,000/obo. 334-5788.

(For Sale ads continued on Page 7)

travel

NATIONAL PARKS UTAH & ARIZONA, May 11-21. Deluxe motor coach, 10 nights, 14 meals, Durango/Silverton train ride, Badlands, Mt. Rushmore, Grand Canyon & more! \$1,599 pp dbl occ.

MINNESOTA'S MAJESTIC NORTH SHORE, June 10-14. Deluxe motor coach, 7 meals, scenic byways & lighthouses, Summit Express Gondola, Apostle Islands Cruise & more! \$859 pp dbl occ.

NEW YORK CITY YOUR WAY, June 26-30. Round trip air from Mpls to NYC, 4 nights at Millennium Broadway Hotel, trip geared for those who have been to New York before. \$1,899 pp dbl occ.

HEART OF ALASKA, July 12-19. Round trip air from Mpls to Anchorage, 13 meals incl. Alaskan Salmon Bake, Riverboat Discovery Cruise, Chena Indian Village & more! \$3,379 pp dbl occ.

Call 4-Seasons at 800-328-4298 and reserve space today! Be sure to tell us you are Steele-Waseca members!



swce 2018 board of director nominees

June 5



The 2018 Nominating Committee has selected the following nominees for the Steele-Waseca Cooperative Electric board of directors. Committee members include: Wayne/Mae Maas, Faribault; Jerome/Diane Stenzel, New Richland; Peter Rohe, Faribault; Bert Wiersma, Ellendale; Pete/Melissa Bauer, Nerstrand; Kendall/Laura Strawmatt, Owatonna; Ben Sunde, Blooming Prairie; Jane Middlestadt, Owatonna; and Guy/Barb Jarvi, Webster. The election of directors will take place during Steele-Waseca's 82nd annual meeting on Tuesday, June 5, 2018, at the co-op's headquarters located at 2411 West Bridge Street in Owatonna. 33731

District 1



Patrick J. (PJ) Duchene, incumbent, resides and operates the family farm in Wells Township, west of Faribault, with his wife, Randi. The couple has a son, Patrick, and daughter, Sumer. PJ also works as the shop foreman with the Rice County Highway Department. As for why he wishes to represent District 1 on the Steele-Waseca board of directors, PJ stated, "I feel I can be a very good voice for the member-owners of the co-op. I also enjoy learning new things. The last three years have went by so fast." He is a Credentialed Cooperative Director and is presently working on his board leadership training. As for the qualities he brings to the board, PJ said, "I'm young and outgoing. I enjoy being involved in my community."

District 3



Duane R. Edwardson, incumbent and chaplain of Steele-Waseca board of directors. He has been a director since being elected in 2003. Duane, and his wife, Mary, are semi-retired farmers residing in Lemond Township in Steele County. They have two daughters, Sheryl and Karen; a son, Alan, and six grandchildren. Duane and Mary are members of LeSueur River Church in Waseca County. Duane has previously served as Lemond Township treasurer, on the FSA and FMHA boards, Steele County Board of Adjustments, and Steele-Waseca Advisory Committee. "Being on the Steele-Waseca board has been a learning experience," stated Duane. "It is my belief the SWCE is a well managed quality cooperative. I would like to use the knowledge and experience that I have gained to meet the many challenges that we are about to face." As for the qualities he brings to the board, Duane stated, "The ability to listen and make good common sense decisions to help our cooperative grow successfully into the future."

District 5



Rodney D. Krell, incumbent, and his wife, Michelle, reside in Blooming Prairie Township. Rodney is a fourth generation farmer to operate the Krell family farm. Their diversified crop farm raises corn, soybeans, sweet corn, and peas. The couple has two adult children, son, Justin, and daughter, Jenna. Rodney currently is a member of the Blooming Prairie school board, Blooming Prairie Education Foundation board, Blooming Prairie FFA Alumni Association, Knights of Columbus, Lions Club, and Steele County Agricultural Society. Rodney serves as Eucharistic Minister at his church. Honors include the 1996 Steele County Soil and Water Conservation Farmers of the Year, and the 2012 Steele County Farm Family of the Year.

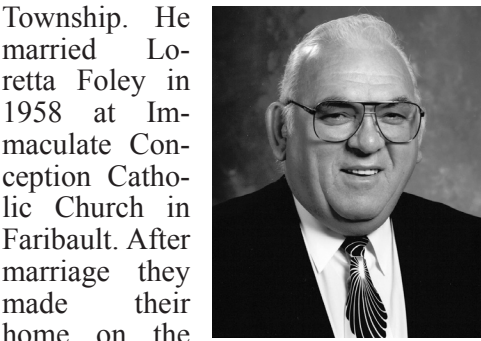
Former Steele-Waseca director, Kenneth Mracek, dies at age 80

Former Steele-Waseca Cooperative Electric Director, Kenneth J. Mracek of Northfield, died unexpectedly at his home, March 24.

Mracek was elected to the board of directors during the annual meeting in 1993 and served until the end of his term in 2011. Ken served as the board chaplain following the board's reorganizational meeting in 2003.

"Ken Mracek was knowledgeable and accommodating as a director at Steele-Waseca Cooperative Electric," stated Steele-Waseca General Manager Syd Briggs. "He would review information prior to each meeting and ask questions or give suggestions based on the situation. Ken was always pleasant and even mannered, remembered a lot of cooperative history, and was a great team player."

Mracek attended Immaculate Conception School in Lonsdale and graduated from Northfield High School in 1955. During and after his education he farmed the family farm in Webster



Kenneth Mracek

Township. He married Loretta Foley in 1958 at Immaculate Conception Catholic Church in Faribault. After marriage they made their home on the farm. Along with farming, Ken owned and operated Ken's Cabinets and Karpentry. Loretta died in 2000 and Ken retired in 2001.

Ken was a longtime member of the Church of St. Dominic, and a 4th Degree Knight of Columbus.

Survivors include his companion, Cathy Malecha; his daughters: Kim (Woody) Loesch of Northfield, Kori (Matthew) McCarty of Bloomington, Karla (Jeff) Althoff of Chanhassen, and Karroll Muzzy of Lakeville; five grandchildren; his sister, Bella (Fritz) Hertaus of New Prague; along with nieces, nephews, and other relatives.

swce
sparks • may 2018

16th Annual Meatball Dinner

Sunday, April 29, 2018
11 a.m. - 1 p.m.
Community Lutheran Church
106 3rd St. SE, Geneva, MN

Everyone Welcome!!!

Serving: meatballs, mashed potatoes & gravy, corn, coleslaw, relishes, rolls, and pie.

Free Will Donation

\$1 Raffle Tickets available to win a beautiful homemade quilt

Worship Service at 9:30 a.m.

cookin' connection

Best Oatmeal Cookies

Norma Bickel

Northfield

1 c. shortening	1 1/2 tsp. vanilla
1 1/2 c. brown sugar	1 1/2 c. flour
1/2 c. white sugar	1 tsp. soda
2 eggs	1/2 tsp. salt
2 tbsp. milk	4 c. quick cook oatmeal

Blend shortening with the sugars. Add other ingredients in the order given above (top to bottom, left column then right column). Mix them well. Then drop by rounded tablespoons full onto ungreased cookie sheet. Bake at 350° for 15 minutes or until nicely brown.

Please use a 3 x 5 card when submitting your recipe. The member whose recipe is published will receive a \$7 energy credit.



Steele-Waseca Cooperative Electric's solar subscribers will see a 48 kWh credit per panel on this month's statement for energy generated during March 2018. Learn more about community solar and The Sunna Project by visiting Steele-Waseca's website, swce.coop. 1020022

Was your account number in Sparks?

Each month five account numbers are printed in *Sparks* and a total of \$35 in energy credits is divided among however many of those numbers are found. For example, if all numbers are found, a credit of \$7 will be applied to the members' following month's electric bills; or, if only one number is found, that member receives the full \$35 credit. Members finding their numbers who have a load management receiver on their dual fuel, electric water heater, air conditioner, or genset will receive an additional \$7 credit. When you find your number, phone our office no later than the 7th of the month following receipt of the *Sparks*, or the amount will be forfeited.

April issue of Sparks



Numbers found:

James A. Wilker
David Lindaman

Numbers not found:

Mr. & Mrs. Lyndon A. Code
Dean Van Hal
Allen P. Quast



Sparks in brief . . .

- **Want easy energy payments?** Sign up for **EnergyPay Plus**, our automatic payment plan, or **Energy Prepay**, our discounted advance payment plan. Contact our office for details. You may also pay your bill online at www.swce.coop. By entering your Steele-Waseca username and password you can also view a 13-month history of your account.

- **If you have changed or added phone numbers**, please contact SWCE to update your contact information.

- **Need a new water heater?** For information about our Westinghouse Electric Water Heater Program, phone Cindy Butterfield at our office between 8 a.m.-3:30 p.m., 446-4204 / 800-526-3514.

- **March temps** – The average high temperature for March was 37° F, while the average low was 23° F. They compare to last year's average high of 40° F and average low of 24° F.

- **ENERGY STAR® Rebates** – In 2018, all ENERGY STAR refrigerators/freezers (with recycling), electric clothes dryers, dehumidifiers, central air conditioners, air and ground source heat pumps, light emitting diode (LED) bulbs purchased (limit 5) are eligible to receive rebates (may not be combined with special promotions). Rebate request forms must be submitted within 90 days of purchase. Rebate forms are available at www.swce.coop. For more information or to receive a rebate request form, phone Cindy Butterfield at 446-4204 or 800-526-3514.

- **Steele-Waseca's tree service contractor** – Carr's Tree Service, Inc., is contracted to do SWCE's tree trimming. To report a tree concern, phone:

507-451-7340 / 800-526-3514

STEELE COUNTY TIP LINE

866-878-7964

TO BE USED TO REPORT ANY CRIME OR SUSPICIOUS ACTIVITY ANONYMOUSLY

COVERS ALL OF STEELE COUNTY INCLUDING THE CITIES OF:

OWATONNA ELLENDALE
BLOOMING PRAIRIE MEDFORD

health & safety connection

GFCIs

Your Protection
from Electrocution



Ground Fault Circuit Interrupters have **saved thousands of lives** since their introduction to the National Electrical Code in the 1970s. Make sure your home is **properly protected** against ground faults with the correct installation of GFCIs.

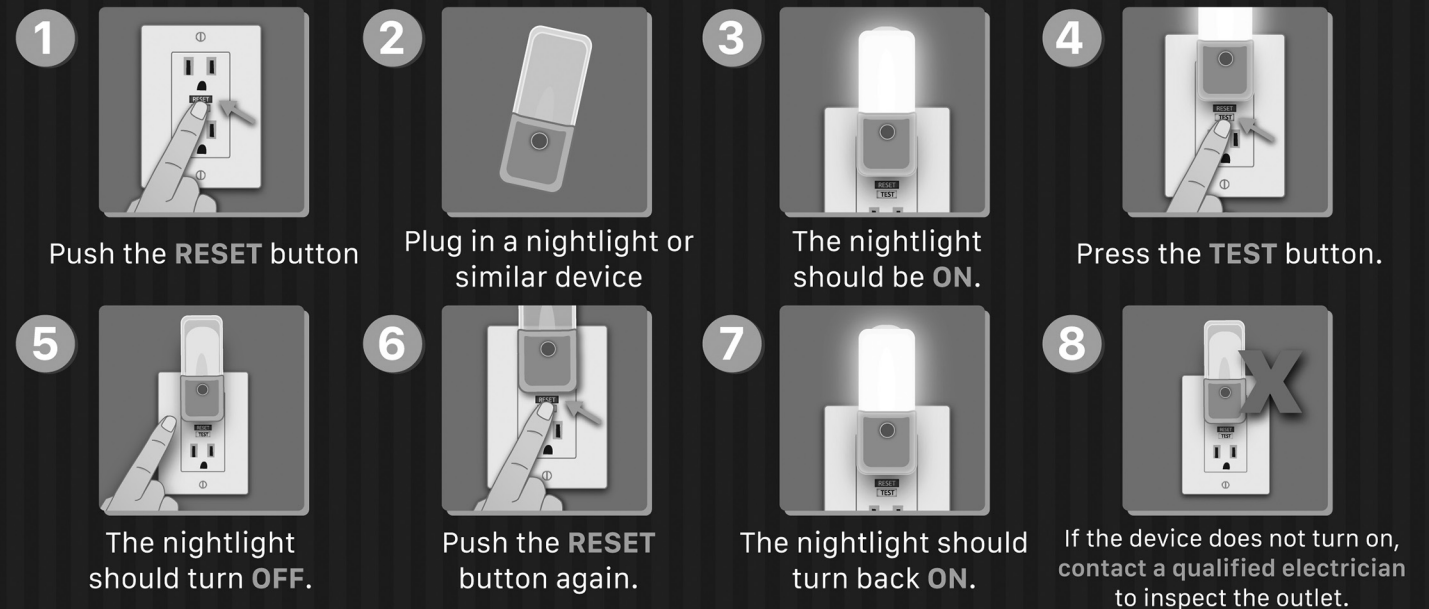
50%

The Consumer Product Safety Commission estimates that **50% of home electrocutions** have been prevented by the introduction of GFCIs.

GFCI Protection is required for outlets installed in:



How to Test a GFCI



www.facebook.com/ESFi.org

www.twitter.com/ESFIdotorg

www.youtube.com/ESFIdotorg

MAY IS NATIONAL ELECTRICAL SAFETY MONTH