

member connection

(Annual meeting continued from Page 1)

legiance. “The Star-Spangled Banner,” was sung by Lisa Quimby of Faribault.

SWCE’s 2016 Youth Tour delegates, Abigail Hansen of Owatonna (pictured adjacent right) and Karsten Singh of Northfield (pictured top far right), shared their experiences in Washington, D.C. The co-op’s 2017 Youth Tour delegates, Hannah Singh and Brant Wieber, both of Northfield, were recognized prior to traveling with Minnesota’s Youth Tour delegation to Washington, D.C., June 10-15.

Steele-Waseca General Manager Syd Briggs updated the membership on the business of the co-op during the past year resulting in a strong year for margins.

At this year’s ACRE (Action Committee for Rural Electrification) booth, the newest members to join were: Mary Duchene of Faribault, and Kevin Spindler of Owatonna. SWCE Director John Beal spoke of the ACRE program to annual meeting attendees. ACRE participation supports elected officials who support legislation keeping electricity reliable and affordable for rural electric cooperatives.

The recipients of this year’s Grand Prize drawings were: Ron Rausch of Pemberton, \$300 Best Buy gift card; Gene Peterson of Owatonna, \$200 Lowe’s gift card; and Eugene Larson of Ellendale, \$100 Target gift card (all pictured adjacent right respectively). In addition, drawings were conducted for the flowers displayed on stage at the annual meeting.

The Steele County Sheriff’s Posse provided parking assistance and monitoring services during the annual meeting. Medical and safety assistance was

(Friedrichs retirement continued from Page 7)

band, Randy, continue to make Owatonna their home, “Just get caught up with things that have been neglected at our home—clean, organize, paint, yard work, etc. I also hope to read some books, do some sort of craft/sewing project, and reacquaint myself with cooking and baking. And spend more time with family. After I get a few of these things done, I hope to do some traveling.”

Steele-Waseca appreciates the years of dedicated service Kathy has provided to the co-op and their members. We truly wish her the very best in her retirement. *SWCE*



Steele-Waseca’s 2017 Youth Tour delegates, Hannah Singh and Brant Wieber, both of Northfield, were unable to attend the annual meeting on June 6, due to taking finals at school, so SWCE Communications Specialist Randy Sobrack presented certificates and gift-filled backpacks for the delegates to their respective parents, Kristin Moorhead (Hannah’s mom pictured left) and David Wieber (Brant’s father in the middle).



provided by Gold Cross Ambulance of Owatonna. The Explorers of Owatonna provided general assistance throughout the entire meeting. Shuttle transportation was supplied by Miner’s Outdoor & Rec of Blooming Prairie. 20641

Following the annual meeting, the Steele-Waseca board of directors



Mary Duchene of Faribault (center) was randomly selected to receive a decorative lawn/garden ornament after joining ACRE during the annual meeting, June 6. Posing with Mary is her son, District 1 Director PJ Duchene (left), and District 7 Director John Beal, who served as ACRE presenter at the meeting.



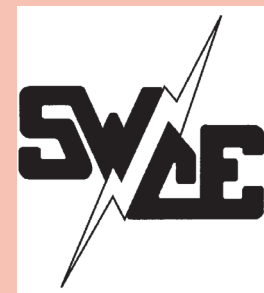
The Explorers of Owatonna perform a much-appreciated role at the annual meeting in providing general assistance before, during and after the event. This future Explorer helped by handing out Dilly@ Bars near the end of lunch catered by HyVee in Owatonna.

conducted their reorganizational meeting where the following officers were elected: Gary W. Wilson of Owatonna, president; John Beal, vice president; Renee Malecha, secretary/treasurer; Ronald Sommers, assistant secretary/treasurer; and Duane R. Edwardson of Ellendale, chaplain. *SWCE*

Energy Efficiency Tip of the Month

Setting your thermostat to a colder setting than normal when you turn on your air conditioner will not cool your home any faster and could result in excessive cooling and unnecessary expense.

Source: U.S. Dept. of Energy



the power of human connections

sparks

Your Touchstone Energy® Cooperative

a monthly newsletter from Steele-Waseca Cooperative Electric

July 2017

Your billing statement this month has a special line listing the amount of your electric sales less power costs in 2016. This is shown as **2016 PATRONAGE BASIS**. Capital credit equity you’ve been allocated for 2016 is shown as **2016 ALLOCATION**. Also listed is the **CAPITAL CREDIT BALANCE**, which is the amount of your remaining accumulated equity. Please save this month’s billing statement if you will need any of those amounts for tax preparation. Only inactive accounts receive separate statements of equity.

inside connections

- 2 Manager Connection
- 3 SWCE recognizes scholarship recipients
- 4 Cookin’ Connection
SWCE community solar update
Sparks in brief
Stray voltage questions
- 5 Do not use utility poles as bulletin boards
Play Ball! Minnesota coming to Owatonna
Call 811 before you dig
Litomysl Summer Festival
- 6 Ad Connection
4-Seasons Vacations
- 7 Ad Connection
- 8 Energy Efficiency “Tip of the Month”

calendar of events

July

- 2-4 Blooming Prairie’s Old Fashioned Fourth of July
- 4 Independence Day 16166
SWCE office is closed
- 12-16 Waseca County Fair
- 18-23 Rice County Fair
- 21 Steele Cty Relay for Life
- 21-23 W. Concord Survival Days
- 22 Waseca Cty Relay for Life
- 27 Korean War ended in 1953
- 28-30 Montgomery Kolacky Days
- 30 Litomysl Summer Festival

Incumbent directors re-elected during Steele-Waseca Cooperative Electric’s 81st annual meeting

Three incumbent directors were re-elected to the Steele-Waseca Cooperative Electric (SWCE) board, June 6, during the co-op’s 81st annual meeting at its headquarters in Owatonna.

Re-elected to three-year terms were District 7 Director John R. Beal of Faribault, District 8 Director Ronald D. Sommers of Northfield, and District 9 Director Renee J. Malecha of Dundas.

Sommers was challenged by Dennis E. Schahn of Kenyon. Beal and Malecha were unopposed and elected by acclamation.

Co-op display booths were available to the 702 members and guests prior to the start of the annual meeting. Steele-Waseca collected non-perishable items with donors receiving an LED bulb. The co-op wishes to thank those who donated: 248 pounds of non-perishable items and \$91 were collected and delivered to the Faribault Area Food Shelf.

Friedrichs retires after 32 years with Steele-Waseca

Steele-Waseca Cooperative Electric Customer Service Representative Kathy Friedrichs retired May 31 after 32 years with the co-op.

“I will never forget when Don Larson, the general manager at that time, told me it would take two years to learn my job. Well, after 32 years, I was still learning new things right up to my retirement,” stated Kathy. “That’s what I loved about my job. Being a small company, there was always lots of variety and I never spent a day bored.”

As for her start in May 1985, Kathy recalled, “I started out microfilming and filing all the co-op’s documents. I also did all the customer side of capital credits, the one part of my job I held the



Elected to the SWCE board of directors, June 6, were incumbents (left to right): John Beal, District 7; Ronald Sommers, District 8; and Renee Malecha, District 9.

Early Bird prize drawings were held for two \$250 travel certificates from 4-Seasons Vacations, Inc., of Albert Lea. The recipients were Doug Matthees of Owatonna and Ruth Scholljegerdes of Medford.

The annual meeting started with the Presentation of Colors featuring the Color Guard, Civil Air Patrol and Faribault Middle School students with those in attendance reciting the Pledge of Al-

(Annual meeting continued on Page 8)

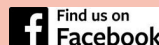


Kathy Friedrichs

(Friedrichs retirement continued on Page 7)

Published monthly by
Steele-Waseca Cooperative Electric
2411 W Bridge Street, PO Box 485
Owatonna MN 55060-0485

Website: www.swce.coop
Email: swce@swce.coop
Fax: 507-446-4242



Find us on
Facebook

Board of Directors

PJ Duchene District 1
Geraldine Lienke District 2
Duane Edwardson, *Chaplain* . District 3
Dennis Ringhofer District 4
Rodney Krell District 5
Gary Wilson, *President*,
GRE Director District 6
John Beal, *Vice President* ... District 7
Ronald Sommers District 8
Assistant Secretary/Treasurer
Renee Malecha District 9
Secretary/Treasurer

Management

Syd Briggs *General Manager*

Division Managers

Darla DeVries *Office*
Douglas Hughes *Marketing*
David Lundberg *Finance*
Kim Huxford *Operations*

Office Hours

8:00 a.m.–4:30 p.m., Monday–Friday

Operations Office Hours

8:00 a.m.–3:30 p.m., Monday-Friday

**For Customer Service, Billing
Questions and Power Outages
Phone:**

507-451-7340 or 800-526-3514

Before calling to report an outage

1. Check fuses and circuit breakers in your home and on meter pole.
2. Check with your neighbors to see if they have power.
3. Look for possible causes such as a tree branch on wires, a broken pole, twisted wires, etc.

**To leave a non-emergency message
whenever SWCE's Office is closed:**

Phone 507-451-7340 or 800-526-3514
Press “2” and leave message including name, account #, and phone # you can be reached at the following business day.

**Call Before You Dig
Gopher State One Call
811 or 800-252-1166**

48-hour notice required for **ALL**
underground cable locations

manager connection



By Syd Briggs,
General Manager

Steele-Waseca Cooperative Electric had warm, sunny weather for the co-op's 81st annual meeting as 702 members, family and guests were in attendance.

Steele-Waseca gave members in attendance a \$30 “Power Perks” gift certificate, which enables them to utilize a credit up to \$30 at member-owned establishments.

Members in attendance at the annual meeting received a \$50 Energy Star® certificate. This incentive is to encourage those members to purchase products with the Energy Star label to enhance energy efficiency at their home. 26968

In addition, members at the annual meeting received a Steele-Waseca serving spoon and a coupon for a free cookie at participating Subway restaurants.



Subway is partnering with Great River Energy cooperatives (of which Steele-Waseca is a member) to promote electrical safety, environmental or conservation education.

This year, one of the three districts up for election had more than one candidate vying for the seat on the board of directors. Our process of having a Nominating Committee at Steele-Waseca is a very important one. It is described in the co-op's bylaws, and having elections and directors that represent our member-owners is unique in the business world, but is among the principles of a cooperative.

The process actually starts in November of each year, in which the members of the Nominating Committee will meet to start the process of interviewing and eventually nominating candidates. Each year the Nominating Committee, which starts with nine members (of which three new members each year replace the three members who have served a three-year term), who call and visit with members they personally know, or that have been recommended by other members, or have earlier in the year expressed an interest in running for a director position on the board.

Sometimes we have members accept the offer and agree to run for the board, and sometimes members decide the time commitment each month is more than they can agree to. Our attorney also asks for nominations from the floor during the annual meeting for each district up for election.

If you would like to find out more information about the requirements of being a director for a future election, please contact our office, any member on the Nominating Committee, or any board member for details.

Syd

ad connection

(For Sale ads continued from Page 6)

1992 DODGE W20, “Gen 1” Cummins diesel, 5-spd, 4WD, 3/4 ton w/1-ton suspension, (1) owner, 99,350 mi., \$7500. 789-5020.

BLK ANGUS BEEF, quarters, halves or whole avail., semi-organically & locally raised. 330-2452/Matt.

OWAT. 45' ELEVATOR; MM 10' TANDEM DISC. 451-1359.

BUCK KID GOATS, Saanan/LaMancha cross. 645-7004.

2014 GMC SIERRA 1500 SLE CREW CAB, silver, 28,500 mi., 6-cyl., \$27,500, Owat. 475-1746.

SEWER LIFT PUMP, complete w/float & all wiring for the alarm, used only 3-weeks, \$250. 334-3804.

1982 HONDA GOLDWING GL, 1100cc, shaft drive, clean engine, air ride, hand grips, runs great, 29,000 mi., \$2300/obo/cash, Waseca. 835-2814.

JD 662 HYD. DRIVEN RAKE, \$1500; **NH 311 BAL-ER**, \$3800; **CEMENT MIXER** w/motor, \$50 (all in gd condition). 744-2792.

INDOOR STORAGE w/14' entry accommodating RVs, etc. 412-1171/leave message.

ROADMASTR 26" MTN BIKE, new brakes, new frnt innr-tube, bike lock chn, used, gd con., \$75; **COMM. CHAR-BROIL QUANTUM GAS GRILL** w/side burner, 20# tank & cover, like new, \$300. 334-5961.

CANARY GRASS & MIXED GRASSES, no rain; **ALF. & GRASS**, no rain; **ALF. & GRASS**, some rained on, \$1.25/bale. 451-7489 or 414-2245/cell.

WOODS 840 BRUSHBULL PULL-TYPE 7' MOWER, sandblasted, primed, painted, new decals, looks like new. 461-0071.

(2) TRACTOR TIRES, new, 184x34, \$1000; **NH 7' S.M. HAY MOWER**, new guards & sickle, \$300; **CASE ALL HY LOADER** for 100 hp tractor, \$500; **(2) 300-BU. PARKER WAGONS**, \$1250/ea. 330-3945.

1-ACRE WOODED LOTS w/lakeshore on Beaver Lk. Gravel cul-de-sac, southern exposure, utilities & common well to lots incl. Ready to build your dream home! www.beaverlakesates.com. 438-9503.

CABIN 23 on Beaver Lk by Ellendale, north side of lake. 259-2492.

USED AUTO PARTS, ENGINES, TRANS., car & truck parts, 30-day warranty, best prices. 332-2300.

SILAGE WAGON, old, gd cond., best offer; **SAM-SUNG WINDOW AIR COND.**, only used about 10-days, 115V, \$125. 332-7590.

Steele-Waseca Cooperative Electric (SWCE) assumes no liability for the content of, or reply to, any item posted. The party posting any advertisement assumes complete liability for the content of, and all replies to, any advertisement and for any claims against SWCE as a result thereof, and agrees to indemnify and hold SWCE harmless from all costs, expenses, liabilities and damages resulting from, or caused by, any advertisement or reply thereto.

(Friedrichs retirement continued from Page 1)

entire 32 years. As job responsibilities changed for all of us through the years, I ended up sitting at every desk in the front office at some point. And, I even got to create the *Sparks* newsletter for about 10 years. I missed working with SWCE's members, so as my last position, I ended up working with collections.” 31687

Kathy was among the handful of current employees who also worked at the former Rose Street office. “We sat very near each other, but it was cozy and a great way to learn from each

GAZEBO, new, 10x10 w/out netting, \$50; **PLAYHOUSE CLIMBER** w/(2) swings, \$50. 334-3676.

TRAILR, 4x8; **(2) TROLLING MOTORS**. 664-9426.

CANARY GRASS; STRAW; ALF./GRASS HAY, new. 744-2871.

FIREWOOD, Walcott area, \$40/pickup load. 332-7739.

1979 MOPED; 80' BALE CARRIER in barn. 334-7756.

2008 PRIUS, silver outside, gray inter., 129,000 mi., clean, \$5995; **ALUM. PONTON LIFT**, \$650 (seen at Cedar Lk, Fbo). 491-4565.

2-SCHWINN BIKES: Hi Plains/boy's/26", Clear Crk/ girl's/26", \$100/ea; **SIMPLICITY LAWN MOWR**, rear eng., 11-hp Kohler,hydrost., grt con.,\$600. 272-5852.

WHITE WICKER CHAIR & OTTOMAN w/(3) cushions, vry gd cond., Lonsdale, \$60. 744-2154.

1998 OLDS CUTLASS GLS, V6, (1) owner, 170,000 mi., gd cond., \$1850/obo. 684-2144.

7-PC WICKER SET, cream w/blue trim, never been outside, w/cushions, great shape, \$550 for all. 952-652-2250/leave message.

TICKETS for World of Outlaws Gopher 50 Charity Late Model Race, July 8, Deer Creek Speedway. 456-2516.

1995 F-150, 4x4, clutch, no rust, 132k mi., \$1900. 334-2673.

1989 PROWLER 5TH WHEEL CAMPER, kit incl., nice shape, \$1900. 789-5554.

SCHWINN HOLLYWOOD WOMEN'S BIKE, 26x1.75, 1-spd, \$100. 330-3178.

1999 16.5' CRESTLINER BOAT, Shorelander trailer, 40-hp Merc. motor, elec. trolling motor, exc. cond. 475-1392.

2001 FORD F-150, 4x4, 157k mi., runs grt, Triton V8, off-road pkg, new elec. trlr brakes & hitch, body in gd shp w/usual MN rust, no rips in inter., elec. windows, seats, grt heatr, no A/C, \$2700/obo. 612-756-4534.

DAYTON FARM DUTY MOTOR, 3-hp, 230V, single phase, 1740 RPM. 213-6582.

1949 FARMALL M, pwr steering, gd rubber, tank heater & new battery. 612-382-4084.

OAK DINING TABLE w/(4) oak high-back chairs, beautiful, pristine cond., 36"x54" table, built-in leaf opens to 54"x54". 649-7216.

other,” Kathy explained. “We spent four months being cross-trained to do each other's jobs, which helped me understand the whole picture.” Adding, “Co-op membership was considerably smaller than it is now and mostly rural. Very different from what it is today, now that we've added housing developments and cities.”

When asked about changes in technology during her career, Kathy replied, “I think being able to see daily meter readings is definitely the greatest technological advancement that affected my job. Before our meters were read elec-

QUEEN BED FRAME with headboard/footboard; **RECLINER; GLIDER; WICKER CHAIR; 55-GAL. AQUARIUM** w/stand & extras; **DINING ROOM TABLE & CHAIRS** w/china hutch. 744-3136.

FARMALL M, #133112 NF, fenders, 12V, (3) new tires, runs good, many new parts, \$1750/obo. 676-2885/Jeremy.

SADDLE, beautiful, like new, for pictures: email cphillops@icloud.com. 330-5256.

SHIPPING CONTAINERS, moisture & rodent proof, store your stuff on your property, free delivery within 50 mi. of Owat. 612-418-4375.

HOME CLEANING SERVICES: will vacuum, dust, etc. 461-9422.

FULL-SIZE BED: bookshelf & footboard, real wood, metal sided, in good shape, other things, \$100. 583-6679.

1987 MACK GRAVEL TRUCK, twin screw, \$15,000; **1000-GAL. TANK** w/liquid fertilizer, approx. 150-gal., \$200/obo; **(3) 1000-GAL. DIESEL FUEL TANKS**, \$500/ea./obo. 455-0895.

MIXED GRASS HAY off wagon in season, small squares, hvy bales. 334-6377.

TOOLBOX for truck bed; **ROCKING CHAIR** w/leather seat & back; **TABLE & (4) CHAIRS; SOFA** w/ matching recliner chair; **KEROSENE HEATR**, new; **LEATHER COWBOY BOOTS**, size 11D. 332-0294.

2015 MAURER HOPPER, A/ride & automatic roll tarp, new, \$31,250. 456-1181.

HVY DUTY TRAILER, 8'x16', (2) 7500-lb axles, new tires, \$1700; **1992 F-250**, 7.3 diesel, Super Cab, new tires, gd shape, 176,000 miles, \$1800. 456-9145.

1985 BUICK RIA, vry gd cond. 838-5267.

CABIN on French Lk, 80' shoreline, leased land, patio, sheds, dock, great fishing, \$89,500. 334-6362.

COMMERCIAL/DEVELOPMENT LAND, Fbo. area. 838-5987.

WHEEL HORSE 418A GARDEN TRACTOR, 18-hp Kohler eng., incl. 42" mower deck, 48" landscaping blade, hydraulic equip. lift, \$1600. 952-836-6782/Bill.

ELECTROBRAID ROPE FENCE, approx. 3600', about 8-yr's-old, \$150. 612-598-6230.

(3) DOWNHILL ROSSIGNOL SKIS; (2) ELEC. BASEBOARD HEATERS, 220V. 470-262-7696.

SILVER FOX RABBITS. 475-1353.

tronically, our members would send in their monthly readings on their payment stubs. Sometimes they'd forget, or in winter were unable to get to their meters, so we'd either estimate their usage or send a lineman to their location to get a reading.” Adding, “Getting daily readings electronically has helped even out monthly bills by being able to use a reading from nearly the same day of every month.”

As for her plans during retirement, Kathy said she doesn't have any major immediate plans as she and her husband.

(Friedrichs retirement continued on Page 8)

ad connection

give away

GERMAN SHEP., white, male, 9-mths-old that needs a gd home, friendly, but also likes chasing my chickens & I don't want to pen him up all the time. 301-5882/Holley.

FREE ONLINE CLASSIFIEDS, you place & remove your own ad on SWCE's website, www.swce.coop, these are separate from **Sparks** & will not appear in **Sparks** unless emailed to sparks@swce.coop.

FARM CATS & KITTENS. 645-7004.

BROWN RUG, 2-pieces, 12x12. 664-9426.

(3) TVs: 20" Symphonic, 14" RCA, 13" Sylvania. 272-5852.

FREE HONEYBEE SWARM REMOVAL, please do not exterminate. 456-0753.

wanted

FUEL BARREL w/elec. pump or sm. gravity feed tank. 456-4431.

SCISSOR-TYPE PONTOON TRAILER for a 20 to 22' pontoon. 952-758-2909.

WILL DO: garden tilling, post-hole drilling, lawn grading, seeding, rolling, lawn mowing, thatching, aerating, erosion control, dirt leveling, seed & fertilizer broadcasting. 390-1567.

ESTATES, COLLECTIONS, FISHING OR HUNTING EQUIP., willing to purchase your collection/estate or set up an online auction. 279-0431/Mark.

HUNTING DOG, pointer trained. 645-2437.

JUNK & UNWANTED APPLIANCES, free drop off, no TVs, computers &/or plastic dishwashers. 210-6728/Dan/Fbo.

CRAFTERS for 18th Ann. Christmas For Veterans Homemade Craft & Bake Sale, Nov. 4, 8:30 a.m.-3:30 p.m., at Trinity Luth. Church, Owa., booth rentals \$30/ea. & incl. tbl/chairs. 455-2755 or 271-3596.

JUNKERS & REPAIRABLES: cars, trucks, most farm & constr. equip., top \$ pd for junkers.332-2300.

KITCHEN CABINETS, CUPBOARDS OR COMPARTMENTS, with or w/o countertop, will pick up. 210-7919/Jay.

NEWER TILLER, 25- to 30-hp; **4-STROKE MERC. OUTBOARD MOTOR** w/long shaft. 465-8566.

All area codes are 507 unless otherwise noted

JD LAWN TRACTOR w/rear-tine tiller. 298-7525.

UNWANTED BIKES & LAWN MOWERS, \$ pd on delivered. 330-3178.

USED TRACTOR TIRE, 14.9x38. 952-652-2933.

DRIVERS w/Class A, gd driving record for sweet corn & veg. hauling, & w/tanker lic., at least 25-y-o & 2-yrs exper. 456-1181.

OLD WINDOWS. 413-3327.

for sale

RUNNING GEAR, \$150. 461-1700.

(19) REZNOR INFRARED TUBE HEATRS, 150,000 Btu, 40' long, less than a yr old; **(37) OLDR REZNOR INFRARED TUBE HEATERS**, 150,000 Btu, 40' long, still in gd working order. 451-9710/Mark or Ron.

MINI STORAGE UNITS, Blmg Prairie. 456-2957.

MFT PAINT MARE, 10-yrs-old, 14'3, loads, trims, ridden in Missouri & S. Dakota, has shots, great disposition, must see, \$2500. 952-200-2280/cell.

ROOF SHINGLING, trusted since 2000, licensed. 271-9129.

RENTAL, Izaak Walton League Bldg., 4 mi. south of Owat., seats 100, full kitchen, grill, Wi-Fi, \$100. 451-7946.

DOG KENNEL, XL, composite, metal door, \$40; **TV CONVERTER**, new in box, \$40. 455-3881.

CLIMATE CONTROLLED UNITS FOR RENT, 11'x9' to 16'x10'. 332-4623.

JD H; JD 50 w/loader; **JD 60** w/loader & 3-pt; **JD 720**, diesel, WF (all run vry well). 330-2820.

TREE TRIMMING, REMOVAL & STUMP GRINDING, pro climber & aerial lift to U of M guidelines; **FRONT CHROME BUMPER** for an F-650, new. 456-1609.

HORSE HAY FEEDER; T-POSTS; INSULATORS; WOOD POSTS. 461-3443.

USED ALKOTA 3112 H-WATER PRESS. WASHER, 3 gpm @ 1100 psi, 115V, single ph., \$1700; **USED ALKOTA 2142 H-WATER PRESS. WASHER**, 2 gpm @ 1400 psi, 115V, single ph., \$1600. 583-2703.

HAY, 65-sq.-bales, no rain, \$2/bale. 583-2134.

1997 POLARIS ATV SPORTSMAN 400 w/plow blade, \$2000. 744-5133.

FORTUNE CREEK TRL LOTS, the covenant allows for a pole shed, starting at \$75,000. 838-5033/John.

3-SEASON HOME, Beaver Lk, walk-out, full basement, 100' lot, 2-bdrm, 2-ba. 835-1366.

TRAILER, 20' long, 8'2" wide, no title, license or lights, \$500; **1996 PONTOON** w/2014 trailer & 2012 30 hp Mercury EFI 4-stroke & tilt, \$7500. 383-3871.

2002 NISSAN MAXIMA, 222,000 mi., runs great, \$500. 952-380-8905.

BEACHFRONT VACATION CONDOS FOR RENT in Fort Myers Beach, South Padre Island & Mexico, visit www.sandysbeachfrontcondo.com for details & photos. 612-865-9604/Sandy.

2003 JD 9420T, 7182 hrs, 36" tracks, auto track ready, 4-hyd, PowerShift trans., well maintained, exc. cond., \$79,000. 573-1129.

INTERSTATE 1 ENCLOSED TRAILER, 5x8 w/up-graded tires in '14, used vry little, \$1650. 332-7624.

1995 FORD F-150, 4WD, fiberglass topper, chrome rims, ext. cab. 456-0296.

3-WAY CAMPER REFRIGERATOR, works great, \$175. 332-0200.

SIMPLICITY BROADMOOR SERIES TRACTOR, 14 hp, V-twin, Briggs & Stratton, Hydro, 38" deck, owner's manual & spare key, \$750. 527-2979.

ROOFING & SIDING, GAF Master Elite® homes & outbuildings. 848-1477.

TRI-AXLE DUMP TRUCK AVAIL. for delivery of rock, gravel, dirt, etc., 15-ton capacity. 456-7774.

BIG MAX UTIL. TRLR, 5'x8', \$400/obo. 456-8821.

(For Sale ads continued on Page 7)

travel

HEART OF ALASKA, July 14-21. Airfare included, 8 days, 12 meals, Anchorage, Denali Park, Fairbanks, Valdez, 1-day Glacier cruise & more. \$3,299 per person based on 2 per room.

GIRLFRIEND GETAWAY, Galena, Ill. Aug. 19-22. Deluxe motor coach, 3 nights, 6 meals, Riverboat dinner cruise, Blaum Bros. Distillery tour, interactive cooking class & more.\$579 pp dbl occupancy.

MEDITERRANEAN CRUISE, Aug. 30-Sept. 10. Airfare incl., 12 days, pre-cruise night in Athens, post-cruise night in Barcelona, 7-night cruise on the Royal Princess. Starting at \$4,499 pp dbl occ.

GREAT AMERICAN HISTORY TOUR, Sept. 19-26. Deluxe motor coach, 7 nights, 10 meals, Chic. Gangster Tour, admission to all museums, battlefields & nat'l parks. \$1,425 pp double occupancy.

Call 4-Seasons at 800-328-4298 and reserve space today! Be sure to tell us you are Steele-Waseca members!



member connection

Steele-Waseca Cooperative Electric scholarships awarded to 18 high school graduates in 2017

Steele-Waseca Cooperative Electric in 2017 has awarded \$500 scholarships to 18 graduating high school seniors.

A portion of the funds to support these scholarships come from unclaimed capital credit equity. 1072395

Steele-Waseca's scholarship program has awarded \$159,750 in scholarships since the program was established in 1954.

The recipients are a dependent of a Steele-Waseca member and will be attending a two- or four-year technical school or college this fall. This year's recipients include the following:

• **Kelsey Novak**, Bethlehem Academy, the daughter of Susan Cepelch-Novak, Faribault.

• **Ben Smith**, Blooming Prairie, the son of Roger and Pam Smith, Ellendale.

• **Morgan Pitt**, Faribault, the daughter of Robert and Teresa Pitt, Faribault.

• **Emilee Fishbaugher**, Fillmore Central, the daughter of Kristin and Bob Schwier, Fountain.

• **Emily Sprau**, Hayfield, the daughter of Bob and Deb Sprau, Blooming Prairie.

• **Tara Traynor**, Janesville-Waldorf-Pemberton, the daughter of Todd and Lisa Traynor, Janesville.

• **Mariah Proehl**, Maple River, the daughter of Jerry and Lisa Proehl, Minnesota Lake.

• **Grant Lewerke**, Mason City, the son of Kevin and Becky Lewerke, Mason City, Iowa.

• **Rachel Bluhm**, Medford, the daughter of Jeff and Michelle Bluhm, Medford.

• **Emily Transburg**, New Prague, the daughter of Foster and Lisa Transburg, Northfield.

• **Robert Kopas**, Northfield, the son of Brian and Debra Kopas, Northfield.

• **Rachel Collins**, New Richland-Hartland-Ellendale-Geneva, the daughter of Paul and Deanna Collins, Waldorf.

• **Sam Bendorf**, Owatonna, the son of Thomas Bendorf, Owatonna.

• **Amy Groskreutz**, St. Clair, the daughter of Mark and Melissa Groskreutz, Wells.

• **Brooke Balfé**, Tri-City United, the daughter of Jim and Barb Balfé, Kilkenny.

• **Johnathon Jaeger**, Triton, the son of Mike and Heidi Jaeger, Claremont.

• **Tristen Cliff**, Waseca, the daughter of Ben and Shannon Cliff, Waseca.

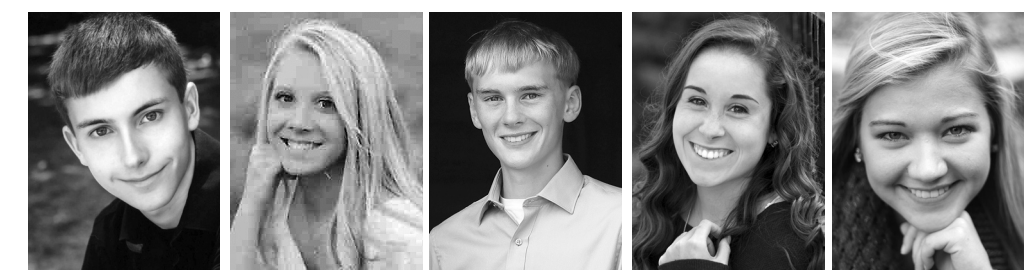
• **Miranda Kluge**, Waterville-Elysian-Morristown, the daughter of Angie and David LaCanne, Morristown; and Chris Kluge.



Kelsey Novak Ben Smith Morgan Pitt Emilee Fishbaugher Emily Sprau



Tara Traynor Mariah Proehl Grant Lewerke Rachel Bluhm Emily Transburg



Robert Kopas Rachel Collins Sam Bendorf Amy Groskreutz Brooke Balfé



Johnathon Jaeger Tristen Cliff Miranda Kluge



cookin' connection

Escaloped Egg Plant

Barb Koplen

Pemberton

1 c. cooked unsalted egg plant, drained
30 crushed soda crackers
1 tsp salt
1 Tbsp sugar
1 Tbsp butter, melted

3 eggs
1 c. milk

Peel and cut egg plant into small squares and cook without salt, then put all ingredients together and mix well. Place in a buttered casserole and bake for one hour at 350° or until top is golden brown.

Please use a 3 x 5 card when submitting your recipe. The member whose recipe is published will receive a \$7 energy credit.



Steele-Waseca Cooperative Electric's solar subscribers will see a 45 kWh credit per panel on this month's statement for energy generated during May 2017. Learn more about community solar and The Sunna Project by visiting Steele-Waseca's website, swce.coop.

Was your account number in Sparks?

Each month five account numbers are printed in *Sparks* and a total of \$35 in energy credits is divided among however many of those numbers are found. For example, if all numbers are found, a credit of \$7 will be applied to the members' following month's electric bills; or, if only one number is found, that member receives the full \$35 credit. Members finding their numbers who have a load management receiver on their dual fuel, electric water heater, air conditioner, or genset will receive an additional \$7 credit. When you find your number, phone our office no later than the 7th of the month following receipt of the *Sparks*, or the amount will be forfeited.

June issue of Sparks



Numbers found:
No members found their #

Numbers not found:
Larry Attenberger
Chris Engel
Jeffrey & Michelle Trager
Norma Jabs
Eka Nagoya/Marvin Anderson, Jr.



sparks • july 2017

Sparks in brief . . .

• **Want easy energy payments?** Sign up for **EnergyPay Plus**, our automatic payment plan, or **Energy Prepay**, our discounted advance payment plan. Contact our office for details. You may also pay your bill online at www.swce.coop. By entering your Steele-Waseca username and password you can also view a 13-month history of your account.

• **If you have changed or added phone numbers**, please contact SWCE to update your contact information.

• **Need a new water heater?** For information about our Westinghouse Electric Water Heater Program, phone Cindy Butterfield at our office between 8 a.m.-3:30 p.m., 446-4204 / 800-526-3514.

• **May temps** – The average high temperature for May was 67° F, while the average low was 47° F. They compare to last year's average high of 70° F and average low of 49° F.

• **ENERGY STAR® Rebates** – In 2017, all ENERGY STAR refrigerators/freezers (with recycling), electric clothes dryers, dehumidifiers, central air conditioners, air and ground source heat pumps, compact fluorescent lightbulbs (CFLs), light emitting diode (LED) holiday lights and bulbs purchased are eligible to receive rebates (may not be combined with special promotions). Rebate request forms must be submitted within 90 days of purchase. Rebate forms are available at www.swce.coop. For more information or to receive a rebate request form, phone Cindy Butterfield at 446-4204 or 800-526-3514.

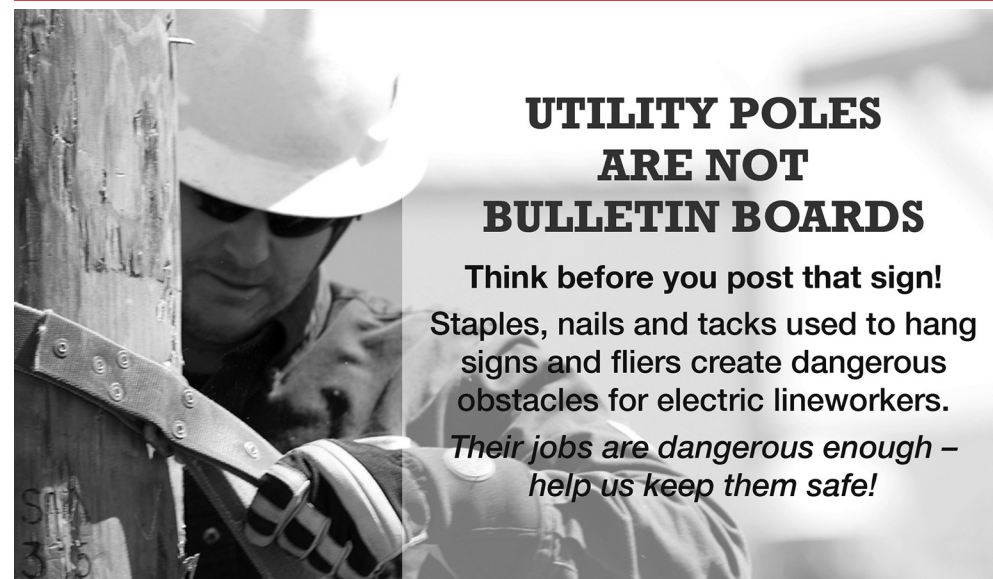
• **Steele-Waseca's tree service contractor** – Carr's Tree Service, Inc., is contracted to do SWCE's tree trimming. To report a tree concern, phone:

507-451-7340 / 800-526-3514

LIVESTOCK OWNERS

If you have questions or concerns regarding stray voltage in your livestock confinement building(s), or are planning an addition, or constructing a new one, call Steele-Waseca at 507-451-7340 or 800-526-3514. Steele-Waseca will work with you and your electrician to eliminate potential stray voltage problems.

health & safety connection



UTILITY POLES ARE NOT BULLETIN BOARDS

Think before you post that sign!
Staples, nails and tacks used to hang signs and fliers create dangerous obstacles for electric lineworkers. *Their jobs are dangerous enough – help us keep them safe!*

Steele County Food Shelf introduces Meals in Motion program

by Rich Pettet, Meals in Motion coordinator

The Steele County Food Shelf has a new program called Meals in Motion.

We have been awarded a grant from Hunger Solutions to be able to get this program up and running. We purchased a transit van that is outfitted with two refrigeration units that are used to carry fruits and vegetables, shelving units to carry our boxes of food, and a ramp. The van is easily recognizable due to the Meals in Motion signs on the sides (see adjacent photo), and a list of our sponsors on the back.

The mission of Meals in Motion is to provide food for those who are unable to make it to the food shelf in Owatonna.

We will be distributing food to several cities in our county, such as Blooming Prairie, Medford, and others. We will



serve anyone in Steele County in need of this. We will distribute fruits and vegetables twice a month, and a five-day supply of canned and boxed foods, milk, eggs, and meat once a month.

We have been delivering already to 57 shut-ins to this date. If you or know of anyone in need of this service in Steele County, please call me at 507-455-2991, or email: Rich@steelecounityfoodshelf.org, to learn if you qualify.

Litomysl Summer Festival

Holy Trinity Church
9946 SE 24th Ave., Owat.
Sunday, July 30
10 a.m. Polka Mass
Festival: 11 a.m. to 4:30 p.m.
Food, Games for all ages
"Live" Music
Prune, Poppyseed &
Apricot "Bucht"y
Silent Auction, Country Store
& Used-a-Bit sale
www.litomysl.webs.com

Area youth invited to free baseball/softball clinic in Owatonna

For a 57th season, the Minnesota Twins, Twins Community Fund and Play Ball! Minnesota, in partnership with Great River Energy (Steele-Waseca Cooperative Electric's wholesale power provider for its legacy members), will offer free youth baseball/softball clinics.

In Owatonna, Youth 1st, Owatonna Huskies Bullpen Club, and Owatonna Parks & Recreation are sponsoring a clinic on Saturday, June 24, at Manthey Park. A session for six- to nine-year-olds starts at 9 a.m. Youth ages 10-13 will have a session starting at 10:30 a.m.

The Play Ball! Minnesota Youth Clinics have always been, and will continue to be, available to participants and communities free of charge. Funding for the Play Ball! Minnesota Youth Clinics is provided by the Twins Community Fund and Great River Energy. No advanced registration is required to participate in a clinic, but participants must complete a waiver form before they will be allowed to participate.

Created in 1961 by longtime Twins scout Angelo Giuliani, the clinic program serves as a way for Play Ball! Minnesota to promote baseball and softball to boys and girls throughout the region.

The current baseball clinic format was developed by former Twins general manager, and amateur baseball supporter, Terry Ryan and former Twins executive Bob Gebhard. The current softball clinic format was developed by Terry Ryan Award winner and longtime softball instructor Jim Berbee.

