

## member connection

### Rohman among 2017 Jay York scholarship recipients

Steele-Waseca Cooperative Electric nominee, Ellie Rohman of Owatonna, was among three randomly-selected recipients of a \$400 Jay A. York scholarship made available from participating cooperatives. 20006



Ellie Rohman

The scholarship was established in recognition of the first Minnesotan to head the National Rural Electric Cooperative Association (NRECA). York was a prominent figure in rural electric cooperative issues for nearly 30 years. He was elected in 1964 to the Nobles Cooperative Electric (NCE) board. Jay was not only well-known for his great leadership ability, but also great dignity, a disarming understanding of the issues and an unyielding dedication to his fellow rural Americans.

The other scholarship recipients were Riley Boese with Sioux Valley Energy and Yanick Tade with South Central Electric Association. This year 11 cooperatives participated in the scholarship in honor of Jay. The others included BENCO Cooperative, Dakota Electric Association, Federated Rural Electric Association, McLeod Cooperative Power, NCE, People's Energy Cooperative, Redwood Electric Cooperative, and Renville-Sibley Cooperative Power Association.

Ellie is a freshman at the University of Wisconsin-LaCrosse, majoring in biology. She plans to pursue a career in physical therapy. Rohman attended Owatonna High School and was involved in many activities including choir, varsity softball and volleyball. She also enjoyed service projects with the National Honor Society and Key Club, along with teaching first grade religious education to students every Wednesday night.

This past summer, Ellie gained many new skills while working at Steele-Waseca. She is the daughter of Matt and Kristi Rohman.



Know what's below.  
Call before you dig.

### Meals in Motion serving Steele County for those in need

Meals in Motion has been delivering food to residents in Steele County since Jan. 31.

"To date we have registered approximately 105 households and 117 individuals," stated Meals in Motion Coordinator Rich Pettet. "The average age of our customers is 72 and consists of shut-ins, seniors, disabled, and those who cannot afford or do not have transportation to the food shelf located in Owatonna. We are so happy that we can help whoever is in need. Many have mentioned they would go without some meals if we were not able to help."

Pettet explained their goal is to deliver a five-day supply of food to each registered household, twice per month. The average food package for these customers is 10 pounds of food, consisting of cereal, rice, pasta, milk, eggs, peanut butter, choice of meat, canned



vegetables, bread, fresh fruits, and fresh vegetables.

"We receive calls weekly of individuals in need of this service," said Pettet. If you know of anyone that needs this service, please call the Steele County Food Shelf at 507-455-2991, and ask for Rich.

Pettet said the program is in need of more volunteers, "With our numbers growing in Meals in Motion, our numbers are also going up in the Steele County Food Shelf as well. So if you have a little time to offer—please call."



# 27<sup>th</sup> Annual Festival of Trees

## Friday, November 17<sup>th</sup> Opening Night Event

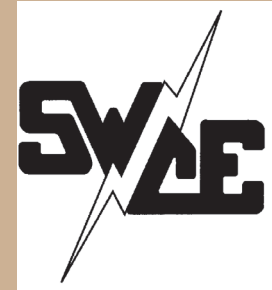
**A Benefit for Advocates for Developmental Disabilities  
Serving Steele County**

**Owatonna Holiday Inn Hotel and Suites**  
2365 43<sup>rd</sup> St. NW  
7:00 p.m.  
Open to the Public

*Silent Auction Cash Bar Hors d'oeuvres & Desserts*  
*"Buy It Now" fresh holiday wreaths*  
*New this Year with the Wall of Wine: Beer and Liquor!*  
*Over 50 Dazzling Beautifully Decorated Trees*

Kick off your holiday season with us!

Tickets may be purchased for \$30.00 at Hy-Vee, CashWise, Kottke Jewelers,  
at the door or by calling the ADD office at 451-9769.



the power of human connections

# sparks

Your Touchstone Energy® Cooperative 

a monthly newsletter from Steele-Waseca Cooperative Electric

November 2017

### VETERANS DAY

Honoring All Who Served  
We Thank You For Our Freedom!



Steele-Waseca Cooperative Electric wishes to remind our members the office will be CLOSED on Friday, Nov. 10, in observance of Veterans Day. Please mail your energy payment early to ensure the co-op receives it by the due date.

### inside connections

- 2** Manager Connection
- 3** 2018 Coal Creek Tour
- 4** Cookin' Connection  
SWCE community solar update  
Sparks in brief  
Steele County Tip Line
- 5** Farm & Home Safety Day  
What to do if your vehicle crashes into a power pole  
Christmas for Veterans  
Aurora Lutheran Church Oyster-Chili Supper
- 6** Ad Connection  
4-Seasons Vacations
- 7** Ad Connection  
New carpeting at SWCE office
- 8** Rohman awarded Jay York scholarship  
Meals in Motion  
27th Annual Festival of Trees

### calendar of events

#### November

- 5** Daylight saving time ends
- 7** Election Day
- 11** Veterans Day
- 23-24** Thanksgiving holidays  
**SWCE office is closed**



## Nominating Committee appointments for 2018 announced

Appointments to the 2018 Nominating Committee have been announced by the Steele-Waseca Cooperative Electric board of directors (see adjacent list).

It is the nominating committee's responsibility to prepare the list of director candidates and post it at the cooperative's office at least 30 days prior to the annual meeting on Tuesday, June 5, 2018.

The election of directors will take place during the business portion of the annual meeting held at Steele-Waseca's headquarters located at 2411 West Bridge Street in Owatonna.

All Steele-Waseca members are eligible to serve as board directors. The governance role of directors can be summarized as being responsible for setting the overall policy and monitoring the business affairs of the cooperative.

If you are interested in becoming a director, you may call Executive Assistant Debbie Eby at Steele-Waseca, and a director nomination form will be sent to you. 17065

Or, if you know another member who would make a good director, and you want him or her to be considered, please contact the nominating committee member nearest you. However, before you make the request, be certain the person will accept the position if nominated.

Committee members are scheduled to meet at the cooperative's office on Thursday, Nov. 16, 2017, and Tuesday, Jan. 23, 2018. The committee would appreciate any assistance you can provide in helping them select director candidates.

All Steele-Waseca members are eligible to vote each year for all expiring board director positions.

The districts electing directors at Steele-Waseca's 82nd annual meeting

### District 1

Peter Rohe . . . . . 838-8136  
Wayne/Mae Maas . . . . . 334-2761  
Jerome/Diane Stenzel . . . 317-9148

### District 3

Bert Wiersma . . . . . 684-9665  
Pete/Melissa Bauer . . . . 334-4049  
Kendall/Laura Strawmatt 451-2959

### District 5

Ben Sunde . . . . . 460-0083  
Guy/Barb Jarvi . . . . . 744-2711  
Jane Middlestadt . . . . . 451-6187

include the following:

- **District 1:** Kilkenny Township in LeSueur County, Shieldsville and Morristown Townships and the Southeast one quarter (SE 1/4) of Erin Township, Southwest one quarter (SW 1/4) of Wells Township, and the Northwest one quarter (NW 1/4) of Warsaw Township in Rice County. (Represented by PJ Duchene)

- **District 3:** Hartland Township in Freeborn County; New Richland, Otisco, Woodville, Blooming Grove and Josco Townships in Waseca County; Lemond Township, the Northwest one quarter (NW 1/4) and the Northeast one quarter (NE 1/4) of Berlin Township, and the Northwest one quarter (NW 1/4) and the Southwest one quarter (SW 1/4) of Somerset Township in Steele County. (Represented by Duane Edwardson)

- **District 5:** Newry Township in Freeborn County; Aurora and Blooming Prairie Townships, and the Southwest one quarter (SW 1/4) of Havana Township in Steele County, and Westfield, Ripley, Ashland and Hayfield Townships in Dodge County. (Represented by Rodney Krell)



Published monthly by  
**Steele-Waseca Cooperative Electric**  
 2411 W Bridge Street, PO Box 485  
 Owatonna MN 55060-0485

Website: [www.swce.coop](http://www.swce.coop)  
 Email: [swce@swce.coop](mailto:swce@swce.coop)  
 Fax: 507-446-4242



### Board of Directors

PJ Duchene ..... District 1  
 Geraldine Lienke ..... District 2  
 Duane Edvardson, *Chaplain* ..... District 3  
 Dennis Ringhofer ..... District 4  
 Rodney Krell ..... District 5  
 Gary Wilson, *President*,  
*GRE Director* ..... District 6  
 John Beal, *Vice President* ..... District 7  
 Ronald Sommers ..... District 8  
*Assistant Secretary/Treasurer*  
 Renee Malecha ..... District 9  
*Secretary/Treasurer*

### Management

Syd Briggs ..... *General Manager*

### Division Managers

Darla DeVries ..... *Office*  
 Douglas Hughes ..... *Marketing*  
 David Lundberg ..... *Finance*  
 Kim Huxford ..... *Operations*

### Office Hours

8:00 a.m.–4:30 p.m., Monday–Friday

### Operations Office Hours

8:00 a.m.–3:30 p.m., Monday–Friday

### For Customer Service, Billing Questions and Power Outages Phone:

507-451-7340 or 800-526-3514

### Before calling to report an outage

1. Check fuses and circuit breakers in your home and on meter pole.
2. Check with your neighbors to see if they have power.
3. Look for possible causes such as a tree branch on wires, a broken pole, twisted wires, etc.

### To leave a non-emergency message whenever SWCE's Office is closed:

Phone 507-451-7340 or 800-526-3514  
 Press "2" and leave message including name, account #, and phone # you can be reached at the following business day.

Call *Before* You Dig  
**Gopher State One Call**  
 811 or 800-252-1166

48-hour notice required for ALL underground cable locations

## manager connection



By Syd Briggs,  
 General Manager

For most people, understanding your electric service may be like understanding your mobile phone.

Some of us just want it to work when we need it; just hit a button or flip a switch and give me light, a voice, a picture, heat, cooling, etc. Well, if you ever wanted to know more, especially about a thing called “energy demand,” and how it impacts your utility bill, today is your lucky day. 25074

To start, it is important to understand how electricity is made and how it is delivered to your home.

Before Steele-Waseca Cooperative Electric can send electricity to your home, that electricity needs to be generated by a generation and transmission cooperative (G&T). Once the electricity has been generated, it travels over high-voltage transmission lines to substations, where the voltage is reduced to a safer level. The electricity then travels over distribution power lines and finds its way into your home.

So, while you pay your bill to us—your electric distribution cooperative—we don't actually generate the electricity you use. That is the job of the G&T.

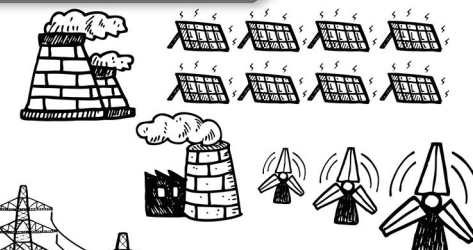
We do help to determine how much electricity our members need to power their homes and businesses, and you play a big part in determining how much electricity the G&T needs to create in order to keep the lights on in our community. That is where these terms “consumption” and “demand” come in.

Consumption is measured in kilowatt hours (kWh). Demand is measured in kilowatts (kW). A lightbulb “consumes” a certain number of kWh, let's say 100 watts, or 1/10 of a kilowatt hour per hour. If that lightbulb stays on for 10 hours, it “consumes” 1,000 watt hours or 1 kWh. The rate at which it “consumed” is the “demand.” Since the rate of consumption was constant per hour, the demand for the entire period of 10 hours remained at 100 watts, or 1/10 of a kilowatt.

Now if you turn on (10) 100 watt lightbulbs, the combined rate would then be 10 x 100 watts = 1,000 watts or 1 kW.

## Where does my power come from?

POWER IS GENERATED ...



...THEN SENT OVER TRANSMISSION LINES ...



... AND ROUTED THROUGH YOUR ELECTRIC CO-OP ...



... WHERE IT IS SENT VIA DISTRIBUTION LINES TO YOUR HOME.

This requires the G&T plant to produce more power in less time in order to meet your demand.

Steele-Waseca purchases kWhs from the G&T (Great River Energy for our legacy members) based on the average demand of our members. Peak demand refers to the time of day when the demand for electricity is highest. This is typically during the evening when families return home from work or school, cook dinner, and use appliances the most. Using electricity during this peak demand period often costs more to both Steele-Waseca and to our members.

Demand is the reason your electric-utility bill fluctuates season to season, and even year to year. Generating and distributing power can be a tricky and complicated business, but rest assured Steele-Waseca will always meet the necessary demand to provide safe, reliable, and affordable electricity to your family.

*Syd*

## ad connection

(For Sale ads continued from Page 6)

**OWAT. 540 STACKER & MOVER; BIN SHEETS,** hold 8000-bu. 291-0287 or 291-0165.

**1958 JD 720 D, SN 7223490; 1952 JD G, SN 53515; TIRES & RIMS,** 13.6-38. 462-3698.

**(2) HUBCAPS:** 14" 1958 Chevy Impala & a 14" 1959 Chevy Impala, \$25/each. 838-8565.

**STORAGE SPACE FOR RENT:** boats, campers, RVs, cars, snowmobiles, etc., cement floor bldg. 383-4707.

**1995 FORD F-150,** 4WD, fiberglass topper, chrome rims, ext. cab; **SHINGLING, LIGHT CONSTRUCTION, TREE REMOVAL** (free estimates). 456-0296.

**EAGLE BOW, RH,** arrows, quiver & site, 40-65 lbs, \$50/obo. 528-2763.

**BOAT WINTERIZATION,** IO boats, 2- & 4-stroke outboards, \$50-\$250. 363-2249/Derek.

**VAL 6 KBE5L RADIANT HEATR,** diesel fired, 115V, 2-stage, 118,000 Btu on high w/fuel preheater, \$2395; **ALKOTA 2142 H-WATER PR. WASHR,** used, 2 gpm @ 1400 psi, 115V, single ph., \$1600. 583-2703.

**DBL SUNFLOWER PROPANE BURNER,** gd cond., \$30/obo; **OZARK TRAIL HIGH VOLUME ELEC. AIR PUMP,** gd for air mattresses, etc., like new, \$15. 334-5799 or 412-3775 (Fbo).

**TREE TRIMMING, REMOVE & STUMP GRINDING,** pro climber & aerial lift to U of M guidelines; **FRONT CHROME BUMPER** for an F-650, new. 456-1609.

**GRASS-FED BEEF:** qtr, half, or whole, no antibiotics or hormones, processed the way you like. 213-4725.

**SHIPPING CONTAINERS,** store your stuff on your property in a moisture- & rodent-proof container. 612-418-4375.

**GIANT CYPRESS,** men's, F.S. Fork, 21-spd, hybrid, 700x35c, \$200; **SCHWINN RANGER,** boy's, 21-spd, 24x175, F.S. Fork, like new, \$100. 330-3178.

**SCHWEITZ 3-POINT SNOWBLOWER,** 7', hyd., 2-way chute, \$300/obo. 332-8174.

**SNOW REMOVAL SERVICES:** Nfld area, commercial, residential, farm, trusted since 2000. 271-9129.

**RESERVE YOUR KATAHDIN HAIR SHEEP EWE & RAM LAMBS** for spring delivery, new bloodlines avail. 451-2722.

**2000 SKI-DOO MXZ 700,** \$2000/obo. 456-0616.

Steele-Waseca Cooperative Electric (SWCE) assumes no liability for the content of, or reply to, any item posted. The party posting any advertisement assumes complete liability for the content of, and all replies to, any advertisement and for any claims against SWCE as a result thereof, and agrees to indemnify and hold SWCE harmless from all costs, expenses, liabilities and damages resulting from, or caused by, any advertisement or reply thereto.



The carpet professionals at Flooring Frenzy in Owatonna replaced the carpeting at Steele-Waseca Cooperative Electric's office during September. The carpet removed (far left photo) had been installed as part of the construction of the co-op's office in 1994. The finished look is pictured in the adjacent photo. 1026193

## DAYLIGHT SAVING TIME

Don't forget to fall back on November 5!  
 Set your clocks back by one hour.



## ad connection

### give away

**BLK WALNUTS**, you pick them. 451-3819.

**CLOUGH & WARREN PUMP ORGAN**, beautiful, needs a gd home. 838-2174.

**UPRIGHT BRINKERHOFF PIANO** w/bench, qtr sawn oak. 952-652-2933.

**KITTENS**, born 7/13/17, (3) white males & a tiger female. 334-9302.

### wanted

**USED WASTE OIL**, 200-gal. minimum. 420-7429.

**50' OF 4' CHAIN-LINK FENCE** w/rails & posts. 414-2164.

**FENTON GLASS COIN DOT & BURMESE**, many colors & patterns; **RED WING POTTERY** (paying top dollar). 213-7120.

**CRAFTERS** for 18th Annual Christmas for Veterans Homemade Craft & Bake Sale, Nov. 4, booth rentals \$30, proceeds buy gifts for Veterans & Gold Star Moms living in Owat. nursing home. 455-2755.

**RASPBERRY PLANTS**, will come dig ourselves. 676-4386.

**SHED** w/treated floor, approx 8x10 wood frame, will move; **HARDWOOD**, will cut & move. 330-0129.

**55-GAL. EMPTY METAL BARREL**. 951-5195.

**RENTER**, 66.9 acres, Lonsdale, crop farmer wanted. 744-2512.

**WILL DO:** garden tilling, post-hole drilling, lawn grading, seeding, rolling, lawn mowing, thatching, aerating, erosion control, dirt leveling, seed & fertilizer broadcasting. 390-1567.

**UNWANTED BIKES & LAWN MOWERS**, \$ paid on delivered. 330-3178.

**ABOUT (15) PEKIN OR ROUEN LIVE DUCKS** for butchering. 612-328-1634.

**FARMLAND TO RENT** in the Owat. area. 213-6979.

**RECIPES** for the *Sparks*, only from members who have not submitted a recipe in 2017, please use a 3x5 card, the member who has their recipe published earns a \$7 energy credit on their SWCE statement.

**ALUM. CATTLE FITTING CHUTE &/OR UPRIGHT SHOW BOX**. 213-0059.

## All area codes are 507 unless otherwise noted

**ESTATES, COLLECTIONS, FISHING OR HUNTING EQUIP.**, willing to purchase your collection/estate or setup an online auction. 279-0431/Mark.

**(1) TRANSFERABLE BUILDING RIGHT** in Rice County—Forest Twsp. 319-8911.

**SMALL PONTOON**. 663-1275.

### for sale

**FLOOR DRAIN**, new, \$15/obo. 334-5412.

**(2) ULTRALITE KENNEL CAGES**, \$100/each/obo; **2017 HARVEST RIGHT™ HOME FREEZE DRYER** plus accessories, never used. 440-8856.

**JD 5020; 2015 MITSUBISHI MIRAGE; FIREWOOD; BALE SPEARS; SNOW/DIRT BUCKETS, JD 145 MOWER**, newer. 402-7679.

**AMERICAN LINCOLN SC7550 SWEEPER SCRUBBER**, ride-on w/Mitsubishi diesel engine, only 230 hrs. 339-1181.

**1965 AC D17**, runs, needs restoration, fair cond., \$2250/obo; **SCRAP METAL**, tin & iron, price negotiable; **CANNING JARS**, \$2/dozen. 330-0347.

**RENTAL**, Izaak Walton League Bldg., 4 mi. south of Owat. seats 100, full kitchen, grill, Wi-Fi, \$100. 451-7946.

**1997 CHEVY Z71 K1500 TRUCK**, 350 cu. in., 5-spd manual, 4WD, elec. brake controller, new brake booster. 210-3156.

**FLARE BOX**, \$600. 455-3881.

**CASE GRAIN DRILL**, older, \$400; **ENTERTAIN. CENTER**, \$75; **COMMODE**, \$15; **WALKER** w/bench, \$25. 456-1870.

**BEACHFRONT VACATION CONDOS FOR RENT** in Fort Myers Beach, South Padre Island & Mexico, visit [www.sandysbeachfrontcondo.com](http://www.sandysbeachfrontcondo.com) for details & photos. 612-865-9604/Sandy.

**16" ROPING/BARRL SADDLE**, exc. con., \$700; **'02 5TH WHL CAMPR**, 28', sleeps-6, A/C, fridge, \$5000. 330-0129.

**TRI-AXLE DUMP TRUCK AVAIL.** for delivery of rock, gravel, dirt, etc., 15-ton capacity. 456-7774.

**TROY-BILT CHIPPER-VAC**, 5-hp, like new, \$250/obo; **SMALL BOAT LIFT**, alum. w/wheels, \$1600. 952-492-6515 or 612-419-4231.

**MIXED HARDWOOD**, split & dried, \$150 per pickup load, delivered within 20 mi. of Fbo. 338-3592.

**LOCAL HONEY**, \$9/lb. 491-5013.

**NH 352 GRINDER-MIXER**, 2-ton, little use, hammers not turned, \$3500. 381-7471.

**HARDWOOD**, aged 2 yrs, 2' or less, best prices closer to Owat., would deliver. 273-3587.

**BLK ANGUS BEEF**: qtrs, halves, or whole avail., semi-organically & locally raised. 330-2452/Matt.

**MINI STORAGE UNITS**, Blmg Prairie. 456-2957.

**SLAB WOOD** cut to 36"-40" lengths, mostly hardwoods, \$35/pickup load. 451-6361.

**COLD STORAGE**: 6'x8' in Fbo—\$49/mth, 10'x24' in Fbo—\$125/mth, 10'x20' in Morrilstwn—\$99/mth. 333-0319.

**PAULSON FRONT LOADER** w/7' bucket currently on AC WD45 tractor. 676-6715.

**ACE PTO SPRAYER PUMP**, \$50; **(3) OIL BARREL PUMPS**, \$15/each; **(3) WOODEN GATES** w/hinges, 38.5"x60" & (2) 38.5"x69.5", \$35/each. 465-8566.

**FARMLAND**, 94-acres near Lonsdale, 84/tillable, 87.9/CPI. 612-701-8988.

**CLIMATE CONTROLLED UNITS FOR RENT**, 11'x9' to 16'x10'. 332-4623.

**GRASS HAY BALES**, small square. 612-756-1131.

**FOX RIVER SOCKS**, new, large variety, men's & women's, \$4/pair; **PATTON UTILITY HEATER**, new, \$10. 332-7624.

**ICE HOUSE**, custom built, hydraulic, 16'x8', foam insulation, tongue & groove cedar, cabinets, radio, lighted holes, really nice, \$7900. 330-1154.

(For Sale ads continued on Page 7)

### travel

**NEW YORK CITY**, Nov. 8-12. Airfare incl., 4-night stay at The Millenium Broadway Hotel, Broadway Musical, Radio City Music Hall, Manhattan Isl. city tour, 9/11 Memorial & Museum. \$2,499 pp dbl occ.

**CHRISTMAS IN CHICAGO**, Dec. 3-5. Deluxe motor coach, Goodman Theatre's, "A Christmas Carol," Christmas around the World tree display, trolley Christmas lights tour & more! \$599 pp dbl occ.

**SAN ANTONIO RIVERWALK**, Feb. 4-11, '18. Deluxe motor coach, 7 nights, 15 meals, Riverwalk boat tour, San Antonio history tour, LBJ Ranch, tour of The Alamo & more! \$1,299 pp double occ.

**MN TWINS SPRING TRAINING IN FLORIDA**, March 15-25, '18. Deluxe motor coach, 10 nights, 18 meals, incl. Best of Nashville guided tour, Coca Cola factory in Atlanta, Ga. \$1,799 pp dbl occ.

**Call 4-Seasons at 800-328-4298 and reserve space today! Be sure to tell us you are Steele-Waseca members!**



## coal creek tour connection

### How you can be part of the 2018 Coal Creek Tour, June 12-14

Seeking ideas for a three-day getaway in 2018? Reservations are now being accepted for Steele-Waseca Cooperative Electric's annual Coal Creek Station Tour to Underwood, North Dakota.

This mini-vacation lets you get away and leaves the planning to us. Mom and/or Dad or Grandma and/or Grandpa, have you ever thought it would be fun to take the kids or grandkids on an outing where everything is planned out, meals included, have fun, learn and be worry free?

The tour includes the Coal Creek Station, Falkirk Mine with side tours of the Blue Flint Ethanol Plant and the High Voltage DC Converter Station.

The three-day tour is scheduled Tuesday, June 12, through Thursday, June 14, 2018. Travel in the comfort of a motor coach from Steele-Waseca to Bismarck, North Dakota, then stay at the Country Inn & Suites, which also has a water park for the kids. Each morning the hotel provides a full buffet breakfast.

Travelers will get a preview of the trip and tours by watching educational DVDs during the first evening at the hotel. Travelers will brush up on their trivia skills as they watch and answer DVD questions for fun prizes.

The tour on Wednesday, June 13, will include the Coal Creek Station to learn about the process of utilizing coal to generate electricity. Next is to observe the HVDC (High Voltage Direct Cur-

rent) Terminal. It's here participants will see the equipment where 22,000 volts of alternating current (AC) from the generators is converted to 400,000 volts of direct current (DC).

From the 21st floor of Coal Creek Station, you will be able to view the Blue Flint Ethanol Plant, which generates over 65-million gallons of ethanol per year by using steam from the Coal Creek power plant, rather than utilizing additional boilers and burning natural gas, making Blue Flint one of the most efficient ethanol plants.

Participants will also visit the Falkirk Mine to observe the open-pit mining process for lignite coal and the huge drag lines that uncover the coal. You'll learn how the land is restored to its original landscape and farmland crop production levels after the coal is mined. If the weather permits, tour participants will be able to walk in the coal field and pick their own coal. 1034271

The tour price per Steele-Waseca member and their guest is \$310 per adult. One of the cooperative's goals for STUDENTS is to offer an educational opportunity about the electrical industry to our membership's young people. This is a great way for parents and/or grandparents to bring up to three students between the ages of 10 and 18 on this tour at NO CHARGE! Additional students may attend for a minimal additional charge of \$150 per student. Students must be accompanied by an



Coal Creek Station personnel lead guided tours of the plant similar to what tour participants experienced in 2017.

adult. For non-member adults, who are not guests of a Steele-Waseca member traveling on the tour, the cost is \$620 per adult.

For members wishing to travel for a second or additional time, the cost is \$620. However, if you bring a guest who is a Steele-Waseca member, who has not been on the tour previously, the price will remain at \$310 per adult to encourage promotion of the tour.

This tour has a history of filling up fast. To preregister or obtain additional information, contact Katie Nelson by emailing, [marketing@swce.coop](mailto:marketing@swce.coop), or calling 507-451-7340 or 800-526-3514. To learn more about the tour, visit Steele-Waseca's website, [www.swce.coop](http://www.swce.coop). Click on "MENU," the plus (+) sign on the same row with "OPPORTUNITIES," then "Coal Creek Tour."



This view of the drag line at Falkirk Mine was captured while the bus was taking tour participants to their scheduled destination.



Tour participants gather at the end of the day to enjoy refreshments, educational activities and socializing.

### Sparks Free Classified Ad Form for all SWCE Members

Ads need to be received in our office by **November 6** to ensure being printed in the December *Sparks*. Please print neatly or type your ad of **20 words or less** on this form. We reserve the right to edit ad copy to allow space for more ads. Ads received after the 6th will be printed in the January issue.

For Sale  Wanted  Give Away

Phone # \_\_\_\_\_ Account # \_\_\_\_\_

Name \_\_\_\_\_

Clip and mail to: SWCE, PO Box 485, Owatonna MN 55060-0485, or fax to: (507) 446-4242 or email your ad to: [sparks@swce.coop](mailto:sparks@swce.coop).



## cookin' connection

### Easy Wild Rice Casserole

Marti Cox

New Richland

- 1 c. uncooked wild rice
- (1) 4 oz. can sliced mushrooms
- 1/4 c. diced onion
- 1/2 c. sliced water chestnuts
- 3 c. chicken broth
- 1/4 c. butter

Rinse wild rice and drain. Mix rice, onion, water chestnuts, and mushrooms in 2-quart casserole. Add broth and butter. Cover and bake at 325° for 1.5 to 2 hours.

Please use a 3 x 5 card when submitting your recipe. The member whose recipe is published will receive a \$7 energy credit.



Steele-Waseca Cooperative Electric's solar subscribers will see a 43 kWh credit per panel on this month's statement for energy generated during September 2017. Learn more about community solar and The Sunna Project by visiting Steele-Waseca's website, [swce.coop](http://swce.coop).

### Was your account number in Sparks?

Each month five account numbers are printed in *Sparks* and a total of \$35 in energy credits is divided among however many of those numbers are found. For example, if all numbers are found, a credit of \$7 will be applied to the members' following month's electric bills; or, if only one number is found, that member receives the full \$35 credit. Members finding their numbers who have a load management receiver on their dual fuel, electric water heater, air conditioner, or genset will receive an additional \$7 credit. When you find your number, phone our office no later than the 7th of the month following receipt of the *Sparks*, or the amount will be forfeited.

## October issue of Sparks



#### Numbers found:

Gerald Jacobson

#### Numbers not found:

Tim Enzenauer  
Christopher/Michelle Narum  
Clayton/Kirsten Aamodt  
Matthew Takada



## Sparks in brief . . .

• **Want easy energy payments?** Sign up for **EnergyPay Plus**, our automatic payment plan, or **Energy Prepay**, our discounted advance payment plan. Contact our office for details. You may also pay your bill online at [www.swce.coop](http://www.swce.coop). By entering your Steele-Waseca username and password you can also view a 13-month history of your account.

• **If you have changed or added phone numbers**, please contact SWCE to update your contact information.

• **Need a new water heater?** For information about our Westinghouse Electric Water Heater Program, phone Cindy Butterfield at our office between 8 a.m.-3:30 p.m., 446-4204 / 800-526-3514.

• **September temps** – The average high temperature for September was 76° F, while the average low was 54° F. They compare to last year's average high of 74° F and average low of 56° F.

• **ENERGY STAR® Rebates** – In 2017, all ENERGY STAR refrigerators/freezers (with recycling), electric clothes dryers, dehumidifiers, central air conditioners, air and ground source heat pumps, compact fluorescent lightbulbs (CFLs), light emitting diode (LED) holiday lights and bulbs purchased are eligible to receive rebates (may not be combined with special promotions). Rebate request forms must be submitted within 90 days of purchase. Rebate forms are available at [www.swce.coop](http://www.swce.coop). For more information or to receive a rebate request form, phone Cindy Butterfield at 446-4204 or 800-526-3514.

• **Steele-Waseca's tree service contractor** – Carr's Tree Service, Inc., is contracted to do SWCE's tree trimming. To report a tree concern, phone:

507-451-7340 / 800-526-3514

### STEELE COUNTY TIP LINE

## 866-878-7964

TO BE USED TO REPORT ANY CRIME OR SUSPICIOUS ACTIVITY ANONYMOUSLY

COVERS ALL OF STEELE COUNTY INCLUDING THE CITIES OF:

OWATONNA ELLENDALE  
BLOOMING PRAIRIE MEDFORD

## health & safety connection



### Farm & Home Safety Day

Steele-Waseca Cooperative Electric Line Foreman Jack Schwab (standing left) was among the presenters at the Waseca County Farm & Home Safety Day at Farmamerica, Sept. 12, near Waseca. Schwab's presentation to these fifth graders from New Richland-Hartland-Ellendale-Geneva Elementary School touched on various aspects of electrical safety, the importance of keeping a safe distance from power lines, and the equipment used by line technicians to avoid being electrocuted. Other safety presentations on the grounds at Farmamerica included: chemicals, riding lawn mowers, boats, ATVs, snowmobiles, farm equipment, animals, pets, along with a demonstration from local Fire & Rescue.



**18th Annual  
Christmas for Veterans  
Homemade Craft & Bake Sale**  
Saturday, Nov. 4  
8:30 a.m. - 3:30 p.m.  
Trinity Lutheran Church  
609 Lincoln Ave., Owatonna

ALL proceeds from the booth rentals, donations, and the "Adopt a Veteran" project goes to buy gifts for all the Veterans and Gold Star Moms living in the local nursing home of Owatonna.

### ANNUAL OYSTER - CHILI SUPPER

AURORA LUTHERAN CHURCH  
6329 SE 38th St.  
Owatonna, MN

SUNDAY,  
NOVEMBER 19<sup>TH</sup>, 2017  
3:00 PM - 6:00 PM

### HOMEMADE CHILI & OYSTER STEW

Oyster-Chili Combo..... \$12.00  
Chili Only ..... \$8.00  
Children (6-12)..... \$5.00  
5 and Under..... FREE

All You Can Eat!



Bake Sale items available.

## WHAT TO DO: IF YOUR CAR CRASHES INTO A UTILITY POLE

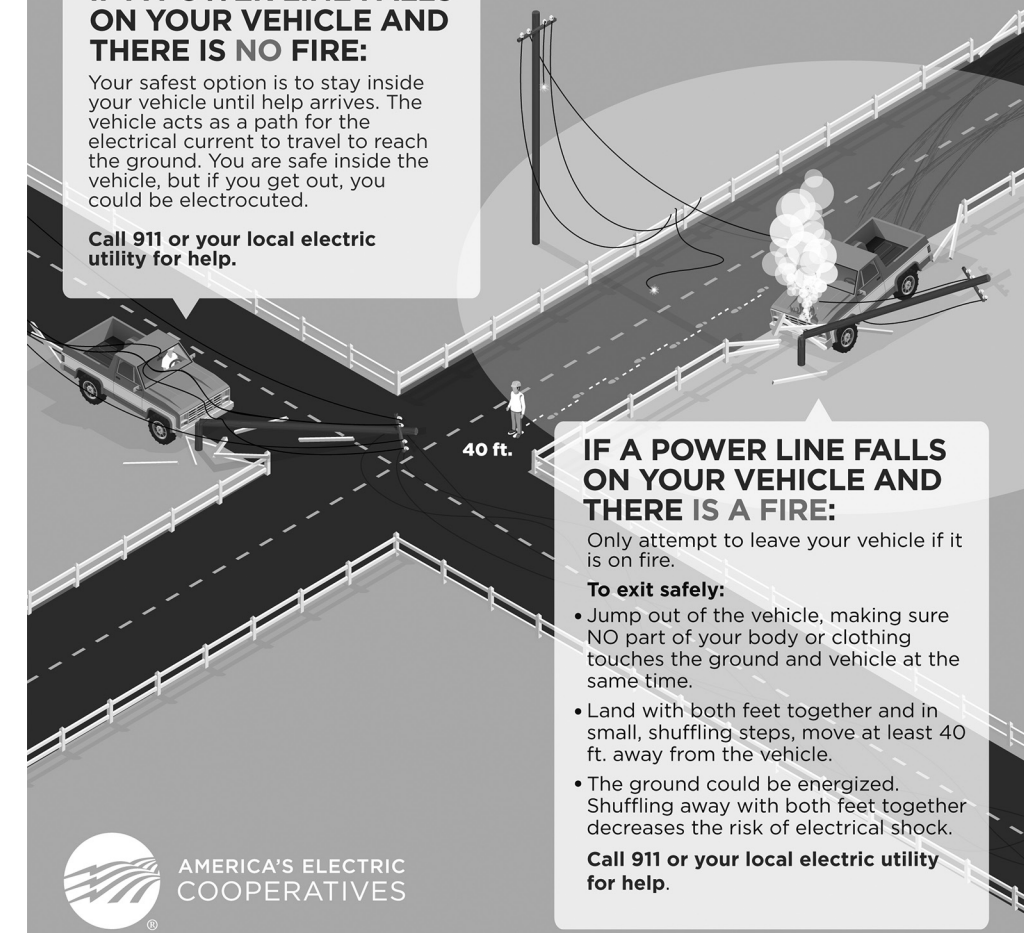
**Accidents happen.** Would you know what to do if your car crashed into an electric utility pole? Knowing what to do could be the difference between life and death.

Always consider power lines and other electrical equipment to be live and dangerous!

### IF A POWER LINE FALLS ON YOUR VEHICLE AND THERE IS NO FIRE:

Your safest option is to stay inside your vehicle until help arrives. The vehicle acts as a path for the electrical current to travel to reach the ground. You are safe inside the vehicle, but if you get out, you could be electrocuted.

Call 911 or your local electric utility for help.



### IF A POWER LINE FALLS ON YOUR VEHICLE AND THERE IS A FIRE:

Only attempt to leave your vehicle if it is on fire.

#### To exit safely:

- Jump out of the vehicle, making sure NO part of your body or clothing touches the ground and vehicle at the same time.
- Land with both feet together and in small, shuffling steps, move at least 40 ft. away from the vehicle.
- The ground could be energized. Shuffling away with both feet together decreases the risk of electrical shock.

Call 911 or your local electric utility for help.

