

member connection



Steele-Waseca Cooperative Electric is accepting sealed bids due by May 4, 2017, for this 1992 John Deere 310D loader backhoe, 4x4 Turbo with Extendedhoe, 3656 hours, minimum bid—\$20,000. For more information, contact Steele-Waseca Line Supervisor Dan Meier.



Steele-Waseca Cooperative Electric is accepting sealed bids due by May 4, 2017, for this 1971 International 4500A Rough Terrain forklift, gas, 3112 hours, minimum bid—\$4000. For more information, contact Steele-Waseca Line Supervisor Dan Meier.

(Gopher State One Call continued from Page 5)

information: your name, home phone number, work/cellphone number and email address; when you plan to begin work; how many days the digging may take; type of work you will be doing; county and city/township where work will be done; address and nearest cross streets or township range/section where work will be done; where you will be digging on the property (also mark the area preferably with white paint); whether any digging will be done in the road right-of-way.

Since most private facilities are not listed on the GSOC, it is the homeowner's responsibility to hire someone to locate their private underground facilities. Private underground facilities, or customer-owned facilities, are those facilities that were installed behind or after the meter. Also, if overhead distribution lines serve the property and the power is then distributed on the property by underground service facilities, those service facilities may be considered private. If the homeowner's electric meter is located on the property line, then that electric line from the meter to the house are considered privately owned and will not be located. **Steele-Waseca Cooperative Electric does not locate buried wires that are the homeowner's responsibility.** A list of private locators is available at www.gopherstateonecall.org. Move your cursor over the "About" tab on the home page, click on "Industry Directory," and "PRIVATE FACILITY LOCATORS." This list is by no means an exhaustive list or a list of locators recommended by GSOC. For additional locators, consult a search engine like Google or the Yellow Pages under "Utilities Underground - Locating." Private locators will charge a fee for their services. 22958

Other private facilities can include: natural gas farm taps, natural gas or propane gas underground piping to buildings, private water systems, data communication lines, invisible fences and many others.

No one should ever remove flags before work is completed for the safety of all digging in the area. If you come in contact with an underground utility, evacuate the area and notify your utility provider.

sparks • may 2017

Family Expo 2017

Saturday, April 29

Trinity Lutheran Church
609 Lincoln Avenue

10:00 a.m.
Vendors & Fun Activities

12:00 pm Lunch
Free-will donation to benefit

15th Annual Meatball Dinner

Sunday, May 21, 2017
11 a.m. - 1 p.m.
Community Lutheran Church
106 3rd St. SE, Geneva

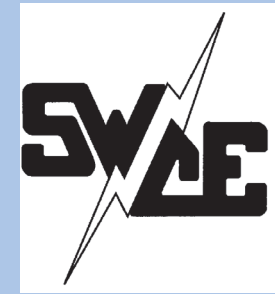
Everyone Welcome!

Serving: meatballs, mashed potatoes & gravy, corn, coleslaw, relishes, rolls & pie

Free Will Donation

\$1 Raffle Tickets available to win a beautiful homemade quilt

Worship Service at 10 a.m.



the power of human connections

sparks

Your Touchstone Energy® Cooperative

a monthly newsletter from Steele-Waseca Cooperative Electric

May 2017

inside connections

- 2** Manager Connection
- 3** SWCE 2017 director nominees Scam reported by SWCE member
- 4** Cookin' Connection SWCE community solar update Sparks in brief Steele County Tip Line
- 5** Tree planting reminders Gopher State One Call
- 6** Ad Connection 4-Seasons Vacations
- 7** Ad Connection
- 8** SWCE accepting sealed bids on equipment through May 4, 2017 Steele County Clothesline Meatball Dinner in Geneva

calendar of events

May

- 1** Law Day Loyalty Day
- 4** National Day of Prayer
- 6-12** National Nurses Week
- 9** National Teacher Day
- 13** Minnesota fishing opener
- 14** Mother's Day
- 15** Peace Officers Memorial Day
- 20** Armed Forces Day
- 20-26** National Safe Boating Wk
- 29** Memorial Day 20896
SWCE office closed



Steele-Waseca looking forward to members attending co-op's 81st annual meeting

The Steele-Waseca Cooperative Electric member-owners are encouraged to attend the co-op's 81st annual meeting on Tuesday, June 6, 2017.

The meeting will be held at Steele-Waseca's headquarters located at 2411 West Bridge Street in Owatonna. The annual meeting is open to Steele-Waseca members

and their guests. The doors will open at 9 a.m., with display and informational booths open until 10:15 a.m.

Parking will be available on the property surrounding Steele-Waseca's headquarters. Miner's Outdoor & Rec, located at Highway 218 South, Blooming Prairie, will be supplying several golf cars to shuttle you from your vehicle to and from the meeting.

There will be two early bird drawings for prizes that will take place prior to the start of the annual meeting. The business portion of the meeting will be-



HyVee of Owatonna will be preparing the "buffet" lunch that will be served following the conclusion of Steele-Waseca's annual meeting on Tuesday, June 6. Pictured is the crew who prepared the smoked pork chops at last year's meeting.



Steele-Waseca Cooperative Electric member-owners and guests pictured at the registration lines prior to the start of last year's annual meeting.

gin promptly at 10:30 a.m.

There is no requirement to call Steele-Waseca to register your attendance for the annual meeting. Members and their guests will only be required to register at the entrance to the annual meeting on Tuesday, June 6.

To be eligible to vote for directors, you must be registered by 10:30 a.m. sharp. Director candidate profiles are featured on Page 3 in this edition of Sparks. Additional candidates may be nominated from the floor during the annual meeting with nominations officially closing at that time.

After the election results are announced, there will be a drawing for grand prizes and the meeting will be adjourned. Following adjournment, a "buffet" lunch will be served by HyVee of Owatonna featuring smoked pork chops, vegetables, potatoes, salad, dinner rolls, coffee, white and chocolate milk, water and soda, with Dairy Queen Dilly® Bars for dessert.

Is my off peak/dual fuel being controlled today?

Visit Great River Energy's website at www.greatriverenergy.com and click on "Load Management"

Need a history of controls? Click on "History" on the "Load Management" page

ad connection

give away

ELEC. HOSPITAL BED; HOIST w/slugs; **SHOW-ER CHAIR; (3) HOSPITAL BED TABLES; ELEC. WHEELCHAIR,** nds batteries. 583-2467 after 8 pm.

STRAW, pretty much loose, some baled, first callers get as much as you can load. 213-8823.

LIGHT-COLORED SIDING from a 52'x28' house & 20'x32' garage, used. 390-4073.

wanted

BARN OR OUTBUILDINGS to re-purpose the lumber; **OLD TIN &/OR LUMBER.** 330-0258/Tim.

ELEC. TRAIN SET in gd cond. 451-1821.

JUNK & UNWANTED APPLIANCES, free drop off, no TVs, computers &/or plastic dishwashers. 210-6728/Dan/Fbo/leave message.

ESTATES, COLLECTIONS, FISHING OR HUNTING EQUIPMENT, willing to purchase your collection/estate or set up an online auction. 279-0431/Mark.

LOOKING TO RENT FARMLAND for 2017 & beyond. 456-6521.

JUNKERS & REPAIRABLES: cars, trucks, most farm & const. equip., top \$ pd for junkers. 332-2300.

USED OIL, 200-gal. minimum. 420-7429.

UNWANTED BIKES & LAWN MOWERS, \$ paid on delivered. 330-3178.

WILL DO: garden tilling, post-hole drilling, lawn grading, seeding, rolling, lawn mowing, thatching, aerating, erosion control, dirt leveling, seed & fertilizer broadcasting. 390-1567.

CRAFTERS for 18th Annual Christmas for Veterans Homemade Craft & Bake Sale, Nov. 4, only home-made crafts, baked goods & plants can be exhibited at this show, donations welcome anytime. 271-3596.

HESSTON 530 ROUND BALER. 952-652-2678.

(10) LAYING HENS. 477-3557.

DEAD/ALIVE GARDEN TRACTORS, will pay \$; **GARDEN TRACTOR LOADER,** attachments, weights & misc. 256-7299, eves/451-0546.

HAY, sm. sq. for sheep & goats; **OLIVER WHEEL WEIGHTS.** 715-205-0411.

HOMING PIGEONS; OLD WINDOWS. 583-2608.

Sparks Free Classified Ad Form for all SWCE Members

Ads need to be received in our office by **May 5** to ensure being printed in the June Sparks. **Please print neatly or type** your ad of **20 words or less** on this form. We reserve the right to edit ad copy to allow space for more ads. Ads received after the 5th will be printed in the July issue.

For Sale Wanted Give Away

Phone # _____ Account # _____

Name _____

Clip and mail to: SWCE, PO Box 485, Owatonna MN 55060-0485, or fax to: (507) 446-4242 or email your ad to: sparks@swce.coop.

All area codes are 507 unless otherwise noted

for sale

FETERL COMM. AUGER w/swing hoppr, 100', 12", \$9500; **RONK 30-HP ELEC. PHASE CONVRTR** (1-ph. input, 3-ph. output), vry gd con., \$3750; **BEHLEN 700 GRAIN DRYER,** 3-ph., \$2500/obo. 317-2910.

BEHLEN 1600-BU. WET CORN HOPPER, \$1600; **BEHLEN 700 3-PHASE CORN DRYER** for parts, \$1500; **BUTLER 3000-BU. GRAIN BIN,** 18' diameter, \$300. 380-2759.

LARGE PET PORTER, composite w/metal door, exc. cond., \$35; **ELEC. HD MEAT GRINDER,** new, \$55; **FLARE BOX,** \$600. 455-3881.

2016 CHEVY CRUZE LT, wht, 11,500 mi., 35-40 mpg, no dings, \$16,000. 213-9823/leave message.

REGISTERED BLK ANGUS BULL, 3-yrs-old as of Feb., great disposition, 100% success rate w/cows & heifers, papers avail. & calves on hand, \$1900. 202-1383 or 202-4089.

CABIN at 17436 Gary Trl #24, French Lk, fully furnished, new roof, dock, (2) storage sheds, leased land. 789-5395.

NH 824 2RN CORN HEAD, fits 782 & 790 choppers, \$2500/obo. 602-0924.

STORM DOORS: 1-alum. & 2-wood; **STORM WINDOWS:** (2) 24x24 & (5) 29x29. 451-5456 after 5pm.

GRAIN WAGON w/hydraulic lift, always shedded. 451-5172.

1986 MONTE CARLO w/T-tops, few bolt-on modifications, new carpet, tires & exhaust, needs trans., \$4000/obo. 210-0913.

CLIMATE CONTROLLED UNITS FOR RENT, 11'x9' to 16'x10'. 332-4623.

WHITCO HHS10 COLD WTR PR. WASHR, used, 10 gpm @ 1500 psi, 230V, single ph., \$3295; **AALADIN HOT WTR PR. WASHR,** used, 4 gpm @ 2300 psi, LP, temp. control, single ph., \$2495. 583-2703.

HOTEL GIFT CERT., Holiday Inn & water park, (2) rooms, (14) water park passes, \$145. 451-8979.

CABIN on Pike Lake near Lutsen, Minn., additional lot also available. 744-4449.

HOME REPAIRS: plumbing, decks (repair or replacement), window & door installation, drywall (repair or installation) & more, quality wrk, exc. references, affordable prices. 581-6562/John.

LADIES GOLF CLUBS, full set w/sand wedge, pitching wedge & ball retriever, golf bag & cart incl., used vry little (1) season. 451-9695.

SHEEP CHARIOT, \$250; **SHEEP TREADMILL,** \$500; **SHEEP BLANKETS,** \$5/blanket. 456-8001.

MINI STORAGE UNITS, Blmg Prairie. 456-2957.

NH 56 BAR RAKE, wrks gd; **WEAVERLINE 420 ELEC. FEED CART,** vry gd cond., 420 hrs; **16' ALU-MACRAFT BOAT.** 332-7590.

OSTER COUNTERTOP MICROWAVE, used 1 yr, like new, blk, 1100-watt, capacity 1.1 cu. ft., size 12x22x17, \$59. 456-2060.

FORTUNE CREEK TRL LOTS, covenant allows for a pole shed, starting at \$75,000. 838-5033/John.

'03 GULF STREAM INNSBRUCK 5TH WHL RV, 26' main room + queen rear bed, large slide, new flr, awning, batt., tires, nice wrkg cond., GN adapter avail. for \$200, \$8900 for camper. 838-8490/Jeremy.

KITCHEN TABLE, 41"x41" w/(2) leaves—each 16.5", \$65. 649-0556.

2002 CHEVY Z71 PICKUP, incl. topper; **TREE TRIMMING, REMOVAL & STUMP GRINDING,** pro climber & aerial lift to U of M guidelines; **FRONT CHROME BUMPER** for an F-650, new. 456-1609.

TAIL LIGHT for Dodge Ram pkup, yrs 1990-2000, still in bx, will fit driver's side, \$20; **BLK PLASTIC** for the garden or around trees w/stake to hold it down, can be rolled up & used again, \$0.15/ft. 451-2687.

PORT. DOG KENNEL, metal bars w/plastic floor, 24.5" long, 22" high, 18.5" wide, \$25. 451-1131.

(For Sale ads continued on Page 7)

travel

DOOR COUNTY & MACKINAC ISLAND, July 9-15. Motor coach, 6 nights, 13 meals, guided tours of Door Cnty & Mackinaw City Carriage ride on Mackinac Isl. & more. \$1,109 pp dbl occupancy.

HEART OF ALASKA (AIR INCLUDED), July 14-21. Eight days, 12 meals included, Anchorage, Denali Park, Fairbanks, Valdez, 1-day Glacier cruise & more. \$3,299 per person based on 2 per room.

ALASKA TOUR & CRUISE (AIR INCLUDED), Aug. 4-16; 13 days, all sightseeing/entrance fees, 7 night southbound cruise on the Island Princess. Starting at \$4,299 per person double occupancy.

GIRLFRIEND GETAWAY—GALENA, ILL., Aug. 19-22. Motor coach, 3 nights, 6 meals, Riverboat dinner cruise, Blaum Brothers Distillery tour, shopping, interactive cooking class. \$579 pp dbl occ.

Call 4-Seasons at 800-328-4298 and reserve space today! Be sure to tell us you are Steele-Waseca members!



swce 2017 board of director nominees

June 6



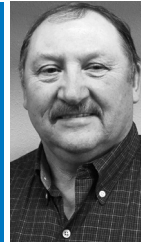
The 2017 Nominating Committee has selected the following nominees for the Steele-Waseca Cooperative Electric board of directors. Committee members included: Wayne/Mae Maas, Faribault; Gene/Joyce Wertheimer, Sherburn; Jerome/Diane Stenzel, New Richland; Pete/Melissa Bauer, Nerstrand; Kendall/Laura Strawmatt, Owatonna; Ron/Pat Brey, New Richland; Guy/Barb Jarvi, Webster; Jane Middlestadt, Owatonna; and Lowell/Kathleen Miller, Owatonna. The election of directors will take place during Steele-Waseca's 81st annual meeting on Tuesday, June 6, 2017, at the co-op's headquarters located at 2411 West Bridge Street in Owatonna.

District 7



John R. Beal, incumbent, and presently vice president of the board, along with his wife, Colleen, live on a farm in Walcott Township, north of Medford. They have two daughters, a son, five grandchildren and three great-grandchildren. John retired in January 2002 after spending 40 years in manufacturing, sales and marketing, which included sales management positions. He is a lifetime member of the Audubon Blue Bird Recovery Program. John enjoys flying and is a member of the Faribault Area Pilots Association. John has earned his Gold, Board Leadership and Certified Credentialed Director status by attending all courses offered for directors. "I want all of our members at Steele-Waseca Co-op to know I always try to keep in mind what is best for our cooperative and the members when representing you both away and at the board table," stated Beal. "I am so proud of this outstanding cooperative and I consider it both an honor and a privilege to represent you the members." John added, "I am committed to continue my best effort to do the very best I can to be your representative. Thank you for your past and future support."

District 8



Dennis E. Schahn, resides with his wife, Rosemarie, in Richland Township, southwest of Kenyon. They have four grown children and 10 grandchildren. Dennis has been a Rice County highway maintenance worker for the last 12 years. "I want to help to continue to provide competitive and high quality service to SWCE members," replied Dennis when asked about his interest in serving on the co-op's board of directors. "I feel I can contribute ideas and solutions for the future growth and development of new energies for the co-op." As for what qualities he would bring to the board if elected, Dennis stated, "I am open minded and work well with other people to find solutions. I respect and have learned from the past, but will always look towards the future of the SWCE members."



Ronald D. Sommers, incumbent, has been a board director since November 2015. He and his wife, Ruth, reside in Northfield Township on the farm that has been in his family since 1872 near Northfield. They have a daughter and a son, who are each married with two children of their own. Now retired, Ron was an agricultural educator for over 20 years in southern Minnesota. After that, during nearly 20 years with Pioneer Hi-Bred International, Inc., Ron was a sales accounting manager for their Central Division, and later Sales Coordinator for Minnesota. Ron has been named Rice County 4-H Alumnus of the Year, Rice County Conservationist of the Year, and received Honorary Minnesota and Honorary American FFA Degrees. "I believe in the cooperative business model and am familiar with the vital role played by cooperatives in bringing modern electric power to rural parts of our state and nation," stated Ron. "Today, our industry faces new and different challenges as we address new technology, concerns about our environment and increasing costs. I believe SWCE has been well-directed and well-managed in the past and would like to contribute to moving our cooperative forward into the future during these exciting and challenging times."

District 9



Renee J. Malecha, incumbent, and her husband, Greg, live in Forest Township in the Millersburg area. They have three adult children. Renee works as a substitute in the Northfield School District. She enjoys bowling, flower and vegetable gardening, yard work and spending time with family and friends. Renee has completed her CCD, BLC, and received a Director Gold Certificate. "I would like to continue to represent District 9 because I feel I have the knowledge to continue to help the cooperative move forward as we transition from carbon-based generation to more renewables," stated Renee. "We need to continue to provide safe, reliable and reasonably priced service to our members." When asked about her qualities and abilities she brings to the board, Renee responded, "I bring a common sense approach to the board table. I work well with the other board members and look out for the greater good of the cooperative and its members. I have the time needed to attend conferences and meetings to educate myself on industry related issues."

Co-op member reports scam of immediate payment demand to keep power on

Steele-Waseca Cooperative Electric was notified April 3 by a Lonsdale store manager of an attempted scam to make an immediate payment over the phone or have their business' power disconnected.

The store manager was first told the call was from Xcel Energy and that if he didn't pay within an hour, their power would be disconnected.

The manager told the caller that he didn't receive power from Xcel and that his bill was current. The perpetrator said Xcel had bought his power line, and the call was transferred to a person claiming to be with Steele-Waseca. When the manager asked to speak with a supervisor, he was put on hold, and the call subsequently ended.

At Steele-Waseca, letters are initially

sent to members who have a past due balance that would warrant a potential disconnection. Secondly, a phone call from a contracted agency working for the co-op calls to remind members of their past due balance. 33545

If someone calls demanding an immediate payment or asks for your banking information, immediately hang up the phone and call authorities. **SWCE**

cookin' connection

Caramel Heavenlies

Rose Koktavay

Northfield

12 graham crackers (4 3/4" x 2 1/2") 1 tsp. ground cinnamon
 3/4 c. butter or margarine 1 tsp. vanilla extract
 2 c. miniature marshmallows 1 c. sliced almonds
 3/4 c. brown sugar (packed) 1 c. flaked coconut

Line a 15" x 10" x 1" baking sheet with foil. Place graham crackers in pan. Cover with marshmallows. In a saucepan, over medium heat, cook and stir butter, brown sugar and cinnamon until butter is melted and sugar is dissolved. Remove from heat and stir in vanilla. Spoon over the marshmallows. Sprinkle almonds and coconut on top. Bake at 350° for 14-16 minutes or until brown. Cool, cut in 2" squares. Yields 6 dozen.

Please use a 3 x 5 card when submitting your recipe. The member whose recipe is published will receive a \$7 energy credit.



Steele-Waseca Cooperative Electric's solar subscribers will see a 38 kWh credit per panel on this month's statement for energy generated during March 2017. Learn more about community solar and The Sunna Project by visiting Steele-Waseca's website, swce.coop. The latest subscriber is Philip/Gail Heim of Medford.

Was your account number in Sparks?

Each month five account numbers are printed in *Sparks* and a total of \$35 in energy credits is divided among however many of those numbers are found. For example, if all numbers are found, a credit of \$7 will be applied to the members' following month's electric bills; or, if only one number is found, that member receives the full \$35 credit. Members finding their numbers who have a load management receiver on their dual fuel, electric water heater, air conditioner, or genset will receive an additional \$7 credit. When you find your number, phone our office no later than the 7th of the month following receipt of the *Sparks*, or the amount will be forfeited.

April issue of Sparks



Numbers found:
 Joe & Kathy Conrad
 Donald & Linda LaCanne
Numbers not found:
 Frederick Gackenheimer IV
 John Quaintance
 Amanda Wacek/Mark Boehme



sparks • may 2017

Sparks in brief . . .

• **Want easy energy payments?** Sign up for **EnergyPay Plus**, our automatic payment plan, or **Energy Prepay**, our discounted advance payment plan. Contact our office for details. You may also pay your bill online at www.swce.coop. By entering your Steele-Waseca username and password you can also view a 13-month history of your account.

• **If you have changed or added phone numbers**, please contact SWCE to update your contact information.

• **Need a new water heater?** For information about our Westinghouse Electric Water Heater Program, phone Cindy Butterfield at our office between 8 a.m.-3:30 p.m., 446-4204 / 800-526-3514.

• **March temps** – The average high temperature for March was 40° F, while the average low was 24° F. They compare to last year's average high of 47° F and average low of 32° F.

• **ENERGY STAR® Rebates** – In 2017, all ENERGY STAR refrigerators/freezers (with recycling), electric clothes dryers, dehumidifiers, central air conditioners, air and ground source heat pumps, compact fluorescent lightbulbs (CFLs), light emitting diode (LED) holiday lights and bulbs purchased are eligible to receive rebates (may not be combined with special promotions). Rebate request forms must be submitted within 90 days of purchase. Rebate forms are available at www.swce.coop. For more information or to receive a rebate request form, phone Cindy Butterfield at 446-4204 or 800-526-3514.

• **Steele-Waseca's tree service contractor** – Carr's Tree Service, Inc., is contracted to do SWCE's tree trimming. To report a tree concern, phone:

507-451-7340 / 800-526-3514

STEELE COUNTY TIP LINE

866-878-7964

TO BE USED TO REPORT ANY CRIME OR SUSPICIOUS ACTIVITY ANONYMOUSLY

COVERS ALL OF STEELE COUNTY INCLUDING THE CITIES OF:

OWATONNA ELLENDALE
 BLOOMING PRAIRIE MEDFORD

health & safety connection

Planting the right tree in the right place

A properly selected and planted tree can add beauty and energy efficiency to your landscape. A poorly selected and planted tree can become high maintenance, dangerous, and short-lived.

The Energy Education Council has advice to help you select the tree that is best for your yard. Spring is a good time for tree planting. April weather is known for being wet and not too cold or hot for a new tree. In fact, Arbor Day—a national observance and celebration of the importance of trees—takes place in April.

One of the first considerations is the purpose of your tree. Will your tree be needed for shade, a windbreak or beauty? These considerations will affect what tree is suitable for you, and where it should be planted.

Dense evergreens provide a good wind block, while leafy deciduous trees provide shade in the summer. No matter what purpose, the best option is always native trees. They require less maintenance and will live longer. You can get more information about native growing trees from a regional University Extension office or a state department of natural resources. The Arbor Day Foundation has a free tree wizard tool that will help you select the best tree for your needs. It is available at www.arborday.org/shopping/trees/treewizard/intro.cfm.

The next step is to decide where you will plant your tree. For a windbreak, plant trees to the north and northwest. For shade, plant trees to the east and west of your home. Remember that fast-growing trees are more brittle, and likely to be damaged in a storm. Plant these trees farther from your home to protect your home from damage.

Select planting locations that will not interfere with your utility lines or power poles. Tall growing trees with a mature height of greater than 40 feet should be planted 50 feet away to avoid future pruning. A mature height of less than 25 feet is recommended for trees planted near power lines. Keep in mind that trees should never be planted directly under power lines, near poles, or too close to electrical equipment.

For more advice on safety and energy efficiency, visit EnergyEdCouncil.org.

Plant the Right Tree in the Right Place

For more tips on smart tree planting in your community, contact your local electric cooperative or visit www.ArborDay.org.

Trees beautify our neighborhoods, and when planted in the right spot, can even help lower energy bills. But the wrong tree in the wrong place can be a hazard... especially to power lines.

LARGE TREES

Height/spread of more than 40 feet, such as:

- Maple
- Oak
- Spruce
- Pine
- Birch
- Sweetgum
- Linden

MEDIUM TREES

Height/spread of 25 to 40 feet, such as:

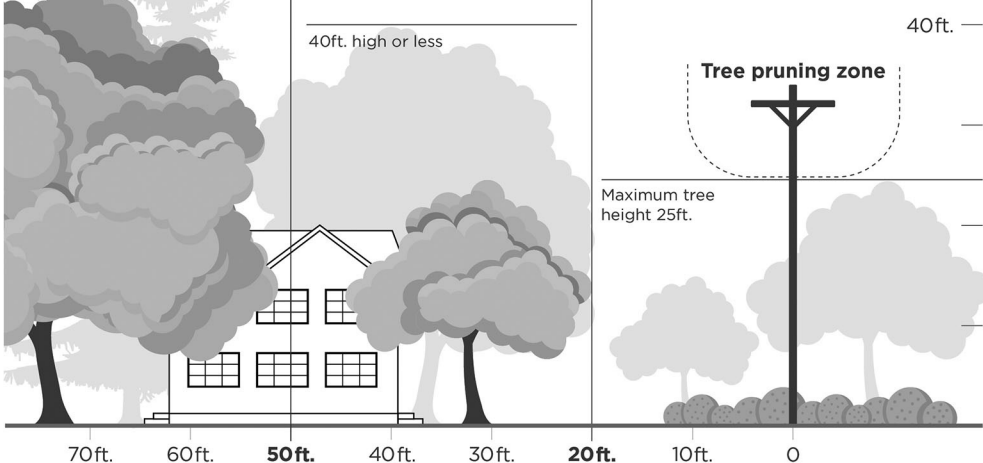
- Washington hawthorn
- Goldenrain tree
- Eastern redbud
- American arborvitae
- Dogwoods

SMALL TREES

Avoid planting within 20 feet of power lines. When planting within 20 feet is unavoidable, use only shrubs and small trees.

Height/spread of no more than 25 feet such as:

- Star magnolia
- Crabapple
- Lilac



Be safe! Always call 811 before you dig to locate any buried utility lines.

Source: The Arbor Day Foundation and the National Rural Electric Cooperative Association

Contact Gopher State One Call at least 48 hours before digging begins

Whether you plan to dig posts for a deck, plant a tree or trench in electric lines for an outbuilding, it is important to understand and utilize Gopher State One Call (GSOC) before starting your project, as it may allow you to avoid costly damages to underground facilities.

The GSOC system is designed to notify utilities which might have underground facilities in the area where digging is planned. That call needs to

be made at least 48 hours (excluding weekends and holidays) before you plan to dig. If a homeowner hires a contractor to do the work, then by law the contractor must obtain the ticket that allows digging to proceed. 1056671

When you contact Gopher State One Call, you may call 811 or 1-800-252-1166. You may also visit www.gopherstateonecall.org to submit your application. Be prepared with the following

(Gopher State One Call continued on Page 8)

sparks • may 2017

5