

cfl/led coupon connection



Save on your next purchase of GE ENERGY STAR® certified CFL and LED bulbs.

UP TO \$5 OFF on GE ENERGY STAR® CFL bulbs (up to \$100 purchase limit)



UP TO \$3 OFF on GE ENERGY STAR® LED bulbs (up to \$100 purchase limit)

Offer valid April 4 - August 31, 2016

Visit energywisemn.com for details and restrictions.

ENERGY WISE MN

LIGHT UP
2016 LIGHTING PROMOTION

PROMOTION DESCRIPTION	REDEMPTION	PARTICIPATING STORES
 Offer valid April 4 - August 31, 2016	COUPONS: \$1 OFF GE ENERGY STAR® CERTIFIED CFLs OR \$3 OFF GE ENERGY STAR® CERTIFIED LEDs	ANY RETAILER where GE ENERGY STAR® CERTIFIED CFLs and LEDs are sold
 Offer valid April 4 - August 31, 2016	IN-STORE: Up to \$5 instant markdown on select GE ENERGY STAR® CERTIFIED LEDs	PARTICIPATING WALMART STORES Visit energywisemn.com for store locations

SWEEPSTAKES
 As part of the CFL Promotion, cooperative members can also enter the Sweepstakes for one grand prize of a \$500 energy credit. Details and participation information for the Sweepstakes are available at energywisemn.com

NOTE: Steele-Waseca members may not combine the co-op's CFL and/or LED rebates with the mark-downs and coupons of this promotion. However, members may combine the instant mark-downs at Walmart with the coupons on this page.

the power of human connections
SWCE sparks
 Your Touchstone Energy® Partner

a monthly newsletter from Steele-Waseca Cooperative Electric August 2016

inside connections

- 2 Manager Connection
- 3 Singh, Hansen reflect on Youth Tour experience
- 4 Cookin' Connection
SWCE community solar update
Sparks in brief
Who found their account number in the July 2016 *Sparks*?
- 5 Power restoration process
Safe food storage when power is out
- 6 Ad Connection
4-Seasons Vacations
- 7 Ad Connection
- 8 CFL/LED lighting promotion

calendar of events

- August**
- 2-7 Freeborn County Fair
 - 5 Rice County Relay For Life
 - 5-6 Dennison Days
 - 6 Claremont Hogfest
 - 12-14 Lonsdale Community Days
 - 19-20 Wells Kernel Days
 - 16-21 Steele County Free Fair
 - 19 National Aviation Day
 - 25 Minnesota State Fair starts
 - 27 3rd Annual Caleb Erickson Memorial Event in Waseca

Litomysl Summer Festival
 at Holy Trinity Church
 9946 SE 24th Ave., Owatonna
 Sunday, July 31

10 a.m. Polka Mass
 Festival 11 a.m. - 5 p.m.
 Food, games for all ages,
 live music

Prune, Poppyseed & Apricot
 "Buchtý"

Silent Auction & Used-a-Bit sale
www.litomysl.webs.com

Ideal weather compliments Coal Creek Tour

Steele-Waseca Cooperative Electric Marketing Division Manager Doug Hughes and Marketing Educational Volunteer Katie Nelson hosted the 37th annual tour to Coal Creek Station and Falkirk Mine, June 14-16, near Underwood, N.D.



An aerial view of Coal Creek Station near Underwood, N.D. (Photo courtesy of Great River Energy)

Three days of travel, fun and educational adventure started Tuesday morning, June 14, with departure from Steele-Waseca's headquarters in Owatonna with Northfield Lines and Motor Coach Driver Mark Estrem.

On the bus ride to Bismarck, N.D., a preview of what would be seen at Coal Creek Station and Falkirk Mine was shown on DVD, which created various educational activities and contests for the drive to reach the Country Inn & Suites hotel in Bismarck, 21403

Upon arrival, the hotel hosted a welcoming room with snacks and refreshments. Everyone had some time to relax, go out to dinner at one of the many nearby restaurants, enjoy the mini-water park at the hotel, then all get together for fun group activities.

On Wednesday, June 15, the day started with breakfast prepared by hotel staff. The first stop on the tour was at

Coal Creek Station near Underwood. Station employees served as tour guides and delivered an informational and enlightening experience regarding the operation of the plant. Tour participants were escorted through Coal Creek Station in small groups and learned how the coal comes in from Falkirk Mine and utilized for electrical generation. Each group learned how fly ash from burned coal is collected and sold as a cement replacement or utilized for environmentally-sound products.

The Coal Creek Station tour gave participants a view from the 21st floor where the Blue Flint Ethanol plant could be seen. The plant utilizes waste steam from the Coal Creek plant as part of their yearly production of 65 million

(Coal Creek Tour continued on Page 7)



Steele-Waseca Cooperative Electric members and Coal Creek Tour enthusiasts took time to pose for a photo during their travel to North Dakota, June 14-16.

ad connection

give away

PLAYER PIANO to a gd home, gd cond. 330-3856.

FREE ONLINE CLASSIFIEDS, you place & remove your own ad on SWCE's website, www.swce.coop, these are separate from Sparks & will not appear in Sparks unless emailed to sparks@swce.coop.

BLACK KITTENS. 451-7578.

wanted

HORSE BRIDLES. 952-738-2781.

WILL DO: garden tilling, post-hole drilling, lawn grading, seeding, rolling, lawn mowing, thatching, aerating, erosion control, dirt leveling, seed & fertilizer broadcasting. 390-1567/cell.

BARN OR OUTBUILDINGS, I remove to re-purpose the lumber; **ANY OLD LOG BLDG**. 330-0258/Tim.

CRAFTERS for 17th Ann. Christmas For Veterans Homemade Craft & Bake Sale, Nov. 5, 8:30-3:30 @ Associated Church in Owa. Only homemade crafts, bakes gds & plants can be exhibited. 455-2755.

JD 24T OR 336 BALER FOR PARTS, need knotter; **10 HP SINGLE PHASE ELEC. MOTOR**. 330-3945.

DEAD/ALIVE GARDEN TRACTORS, will pay \$; **GARDEN TRACTOR LOADER**, attachments, weights & misc. 256-7299, eves/451-0546.

JUNK & UNWANTED APPLIANCES, free drop off, no TVs, computers &/or plastic dishwashers. 210-6728/Fbo.

TO BUY A RAMBLER-STYLE HOME in the Waseca area. 351-1041.

JUNKERS & REPAIRABLES: cars, trucks, most farm & constr. equip., top \$ pd for junkers.332-2300.

HONEY PROCESSING EQUIP.: elec. uncapping knife, tank, strainers, extract, pumps, sieves, bottles, pails, lids, glass & plas. containers. 451-5208/Owat.

UNWANTED BIKES & LAWN MOWERS, \$ paid on delivered. 330-3178.

for sale

FLARE BOX, great shape, \$675; **SONY CAR STEREO**, (4) speakers, AM/FM/CD/MP3, remote in box, \$150. 455-3881.

MINI STORAGE UNITS, Blmg Prairie. 456-2957.

All area codes are 507 unless otherwise noted

ROTO-HOE 550 CHIPPR/SHRDR, on pull type cart, 6 hp Tecumseh motor, recently serv., like new cond., older model, runs grt, starts easy, \$250. 330-3856.

LOFTNESS STALK CHOPPER, 6 row 30, gd knives, new gear box in 2014, overall gd shape. 475-2149.

FP LOVING FAMILY GRAND DOLLHOUSE, (10) rooms of furniture, the family & red convertible car, \$200/obo. 239-2289.

SHINGLING, LIGHT CONSTRUCTION & TREE REMOVAL, free estimates. 456-0296.

20" CHROME WHEELS & TIRES, exc. cond. w/universal bolt holes, \$1100. 438-3753.

INDOOR STORAGE for RV or other large motor vehicle, boats, etc., near Mdfd, low prices. 412-1171.

COLD WATER PRESSURE WASHER on cart, 3 gpm@1000 psi, 115V, single phase, TT9071 pump, 2.3 hp, \$795; **EVAPORATIVE COOLER**, VAL 6 RKF 503, \$1995. 583-2703.

STORAGE: vehicles, boats, campers & RVs, Waldorf area. 380-1609/Chad.

COUNTRY HOME FOR RENT, (4) bdrm. 451-3678.

DUMP TRUCK AVAIL. for all of your hauling needs: rock, dirt, etc., 15-ton cap. 456-7774.

MANY RODS & REELS, all in gd cond. 456-7542.

SPRAY FOAM INSULATION, installing closed or open cell foam. 412-7179/Jeremy.

PASTURE FOR RENT, fenced, rural Dundas. 952-270-5562.

SEABURG HOME STEREO WALNUT CABINET, holds (50) program able LP records, \$100/obo. 334-8465.

USED AUTO PARTS, ENGINES, TRANSMISSIONS, best prices around. 332-2300.

CLIMATE CONTROLLED UNITS for rent, 11'x9' to 16'x10'. 332-4623.

2013 GOLDEN BUZZAROUND SCOOTER, new batteries, seldom used, like new. 685-4392.

GRASS HAY BALES, small square. 612-756-1131.

4-TRUCK GRIP TIRES, 11-00-20, 90% thread, \$250; **2-TIRES**, 14.9 x 28, on AC rims, \$700. 330-3945.

RENTAL, Izaak Walton League Bldg., 4 mi. south of Owat., seats 100, full kitchen, grill, Wi-Fi, \$100. 451-7946.

8' POP-UP CAMPER, sleeps (5), waterproof, \$500. 330-5670.

1956 FORD 960 TRACTOR, runs great, new tires, has Vaughn loader, \$2500; **TIRE CHAINS**, 13.6 x 28, \$175. 330-3444.

MIXED FIREWOOD; BOAT/CAMPER STORAGE; APPLE TREE FIREWOOD; OSTER PET/HORSE CLIPPERS; (6) CATTLE PANELS; (18) T-POSTS. 676-1141.

HOME REPAIRS: plumbing, decks (repair or replacement), window & door installation, drywall (repair or installation) & more, quality wrk, exc. references, affordable prices. 581-6562/John.

FORD 8N, front dist., 3-pt hitch, gd cond., \$1995. 334-3511.

5" 5-TON BEAM TROLLEY, \$200; **WELDING SUPPLIES**, new & used; **GREEN BEANS**. 319-3794.

CAMPER FRIDGE, 3-way (AC, DC, propane), wrks great, \$150. 332-0200.

BEACHFRONT VACATION CONDOS FOR RENT in Fort Myers Beach, South Padre Island & Mexico, visit www.sandysbeachfrontcondo.com for details & photos. 612-865-9604/Sandy.

SCHWINN AIRDYNE EXER. BIKE, like new, \$350; **PRO SOUND SYSTEM**, 3-way speakers, cords & amplifier, \$1000. 744-4271.

BLK ANGUS BEEF: qtrs, halves or whole avail., semi-organically & locally raised. 330-2452/Matt.

ALUM. PONTOON LIFT, 20'-24', \$850; **SM. BOAT LIFT**, \$265; **CHIMNEY**, Class A, like new, stainless steel, 8' w/8" inner liner, \$125. 491-4565.

(For Sale ads continued on Page 7)

travel

ALBUQUERQUE INTERNATIONAL BALLOON FESTIVAL, Sept. 28-Oct. 5. Eight days, 10 meals, Balloon Festival activities + much more! \$1,799 per person based on 2 per room.

NEW YORK HOLIDAY TOUR (AIR INCLUDED), Nov. 9-13. Five days in New York City's Times Square, Radio City Rockettes, Lion King & more. \$2,299 per person based on 2 per room.

CUBA LAND & CRUISE (AIR INCL.), Nov. 12-20. One night Miami, 7 nights cruising on Adonia. Havana, Cienfuegos & Santiago land tours incl. Starts at \$5,299 pp based on 2 per room (balcony).

HOLIDAY BRANSON BY MOTOR COACH, Nov. 17-21. Five days, 7 meals, 6 shows, Christmas Lights, Steamboat Museum. \$769 per person based on 2 per room.

Call 4-Seasons at 800-328-4298 and reserve space today! Be sure to tell us you are Steele-Waseca members!



youth tour connection

Singh, Hansen highlight their Youth Tour experience

by Karsten Singh and Abigail Hansen, Steele-Waseca 2016 Youth Tour delegates

I had an amazing experience and six action packed days! Our first day of touring we saw 11 monuments in D.C., and then we headed to Arlington Cemetery where we saw the changing of the guard of the unknown soldier. Later we visited the Smithsonian museums. We returned to our hotel to hear a presentation about cooperatives. That was just one day of activities, the week had just started!



Karsten Singh

The following day we went to Mount Vernon, home of our first president George Washington. Then we headed to the Marine Corps Museum and we finished off the day with the NRECA Youth Night, which included many great and inspiring speakers.

Our third day of touring we visited several museums including the National Archives and the Holocaust Museum, which was very somber. That night we got to see opening night of *Kinky Boots* at the Kennedy Center for the Arts. We finished off the day at the Iwo Jima Memorial, what a full day!! 1012991

Wednesday was our day at the Capitol. We met with several lawmakers including our two Minnesota Senators. We really got an insider view of our political process. We finished off the day with a dinner and dance for all the delegates from over 40 states.

Thursday was our final day in D.C. We said goodbyes to our new friends and headed back to Minnesota. What a great week, one that I will never forget. I would really like to thank Steele Waseca Electric Co-op for sponsoring me to attend this Youth Tour. I learned so much about our Nation's Capitol and met lots of great people.

Before going on the 2016 Minnesota Rural Electric Youth Tour this past June, when I heard "youth tour," I would imagine a bunch of rambunctious high school kids stuck on a bus together for a week.



Abigail Hansen



Steele-Waseca Cooperative Electric 2016 Youth Tour delegates, Karsten Singh of Northfield (front row, fourth from right) and Abigail Hansen of Owatonna (third row, third from right) were among 40 delegates from Minnesota participating in the annual Youth Tour in Washington, D.C., June 11-16. The Minnesota Rural Electric Association (MREA) coordinated the travel and activities for the state delegation. The Youth Tour is hosted by the National Rural Electric Cooperative Association (NRECA).

My experience on the Youth Tour to Washington D.C., was nothing like that. It was an experience I will never forget. All of us who went on this trip care about the future of cooperatives and their role in our country. The speakers we heard in Washington only solidified this. We all care about each other and our potential. Throughout the week all 40 of us grew to be unified, and we want the best for each other. Finally, all of the youth on the 2016 Youth Tour are invested in America's future.

We spent a day on Capitol Hill speaking with representatives, senators, and other staff members. I think the 40 of us could all agree that through this day we found where we can make a difference in politics. I realized that my voice for co-ops can be heard. All I need to do is put in the effort.

Throughout the week we toured several monuments, memorials, and museums. These put my view on our country's current issues into perspective. I became aware that throughout America's existence people have pulled together and worked to better our country. It really inspired me to take a close look at what I'm doing today to continue striving for the best of America.

Now when I hear "youth tour," all I can think about are the amazing people I met on my youth tour. I think of the inspiring monuments and buildings that commemorate the leaders

who went ahead of me. I think of the speakers I heard that taught me how I can make an impact for cooperatives in America. I think of how I was changed by that trip.



Sparks Free Classified Ad Form for all SWCE Members

Ads need to be received in our office by August 5 to ensure being printed in the September Sparks. Please print neatly or type your ad of 20 words or less on this form. We reserve the right to edit ad copy to allow space for more ads. Ads received after the 5th will be printed in the October issue. 24966

For Sale Wanted Give Away

Phone # _____ Account # _____

Name _____

Clip and mail to: SWCE, PO Box 485, Owatonna MN 55060-0485, or fax to: (507) 446-4242 or email your ad to: sparks@swce.coop.

cookin' connection

Raspberry Jell-O Salad

Diane Vosejka

Lonsdale

- 1 c. hot water
- 1—3 oz. pkg raspberry Jell-O
- 1 c. apple sauce
- 2 small containers of fresh raspberries

Dissolve raspberry Jell-O in hot water. Add apple sauce and fresh raspberries. Pour into a small shallow square pan and refrigerate.

Please use a 3 x 5 card when submitting your recipe. The member whose recipe is published will receive a \$7 energy credit.



Steele-Waseca Cooperative Electric's solar subscribers will see a 60 kWh credit per panel on this month's statement for energy generated during June 2016. Learn more about community solar and The Sunna Project by visiting Steele-Waseca's website, swce.coop.

Was your account number in Sparks?

Each month five account numbers are printed in *Sparks* and a total of \$35 in energy credits is divided among however many of those numbers are found. For example, if all numbers are found, a credit of \$7 will be applied to the members' following month's electric bills; or, if only one number is found, that member receives the full \$35 credit. Members finding their numbers who have a load management receiver on their dual fuel, electric water heater, air conditioner, or genset will receive an additional \$7 credit. When you find your number, phone our office no later than the 7th of the month following receipt of the *Sparks*, or the amount will be forfeited.

July issue of Sparks



Numbers found:
Lee/Diane Felicetta

Numbers not found:
Randall J. Borke
Steve H. Kopachek
Franchon Pirkl
Valley Grove Church



Sparks in brief . . .

- **Want easy energy payments?** Sign up for **EnergyPay Plus**, our automatic payment plan, or **Energy Prepay**, our discounted advance payment plan. Contact our office for details. You may also pay your bill online at www.swce.coop. By entering your Steele-Waseca username and password you can also view a 13-month history of your account.

- **If you have changed or added phone numbers**, please contact SWCE to update your contact information.

- **Need a new water heater?** For information about our Marathon Electric Water Heater Program, phone Cindy Aamot at our office between 8 a.m. and 3:30 p.m., 446-4204 / 800-526-3514.

- **June temps** – The average high temperature for June was 80° F, while the average low was 60° F. They compare to last year's average high of 78° F and average low of 59° F.

- **ENERGY STAR® Rebates** – In 2016, all ENERGY STAR refrigerators/freezers (with recycling), dehumidifiers, central air conditioners, air and ground source heat pumps, compact fluorescent lightbulbs (CFLs), light emitting diode (LED) holiday lights and bulbs purchased are eligible to receive rebates (may not be combined with special promotions). Rebate request forms must be submitted within 90 days of purchase. Rebate forms are available at www.swce.coop. For more information or to receive a rebate request form, phone Cindy Aamot between 8 a.m. and 3:30 p.m. at 446-4204 or 800-526-3514.

- **Steele-Waseca's tree service contractor** – Carr's Tree Service, Inc., is contracted to do SWCE's tree trimming. To report a tree concern, phone:

507-451-7340 / 800-526-3514

STEELE COUNTY TIP LINE

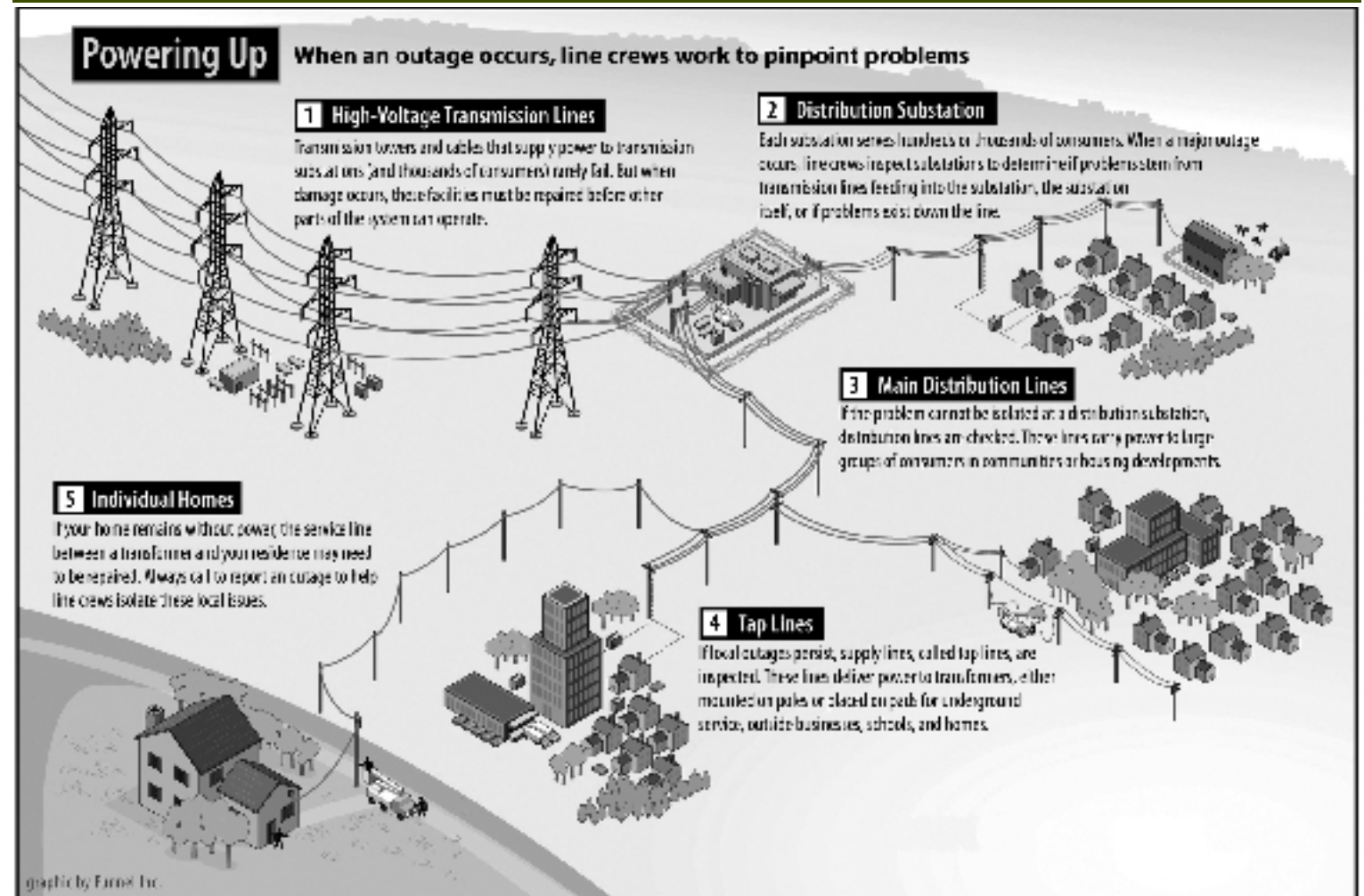
866-878-7964

TO BE USED TO REPORT ANY CRIME OR SUSPICIOUS ACTIVITY ANONYMOUSLY

COVERS ALL OF STEELE COUNTY INCLUDING THE CITIES OF:

OWATONNA ELLENDALE BLOOMING PRAIRIE MEDFORD

health & safety connection



When electricity goes out, most of us expect power will be restored within a few hours. But when a major storm causes widespread damage, longer outages may result. Co-op line crews work long, hard hours to restore service safely to the greatest number of consumers in the shortest time possible. Here's what's going on if you find yourself in the dark.

Keeping food safe during a power outage

Courtesy: United States Department of Agriculture (USDA)

The loss of power from high winds, snow or ice could jeopardize the safety of your food.

Knowing how to determine if food is safe and how to keep food safe will help minimize the potential loss of food and reduce the risk of foodborne illness.

Always keep meat, poultry, fish, and eggs refrigerated at or below 40° F and frozen food at or below 0° F. This may be difficult when the power is out.

Keep the refrigerator and freezer doors closed as much as possible to maintain the cold temperature. The refrigerator will keep food safely cold for about four hours if it is unopened. A full freezer will hold the temperature for approximately 48 hours (24 hours if it is half full) if the door remains closed. Obtain dry or block ice to keep your refrigerator as cold as possible if the power is going to be out for a prolonged period

of time. Fifty pounds of dry ice should hold an 18-cubic foot full freezer for two days. Plan ahead and know where dry ice and block ice can be purchased.

Digital, dial, or instant-read food thermometers and appliance thermometers will help you know if the food is at safe temperatures. Keep appliance thermometers in the refrigerator and freezer at all times. When the power is out, an appliance thermometer will always indicate the temperature in the refrigerator and freezer no matter how long the power has been out. If you're not sure a particular food is cold enough, take its temperature with a food thermometer.

May I refreeze the food in the freezer if it thawed or partially thawed? Yes, the food may be safely refrozen if the food still contains ice crystals or is at 40° F or below.

As for food in the refrigerator, **never**

taste it to determine its safety. Discard any perishable food (such as meat, poultry, fish, eggs and leftovers) that have been above 40° F for two hours.

Among the foods that will be safe if above 40° F for over two hours: hard cheeses (Cheddar, Colby, Swiss, Parmesan, provolone, Romano), processed cheeses, grated Parmesan, Romano, or combination (in can or jar), butter or margarine, opened fruit juices, opened canned fruits, fresh fruits, dried fruits, peanut butter, jelly, relish, taco sauce, ketchup, mustard, olives, pickles, opened vinegar-based dressings, bread, rolls, cakes, muffins, waffles, pancakes, bagels, and raw vegetables.

Opened containers of mayonnaise, tartar sauce, or horseradish need to be discarded if the refrigerated temperature is above 50° F for over eight hours.